

Pediatric seating system

Versatile, adjustable, comfortable and innovative design



PHYSIPRO

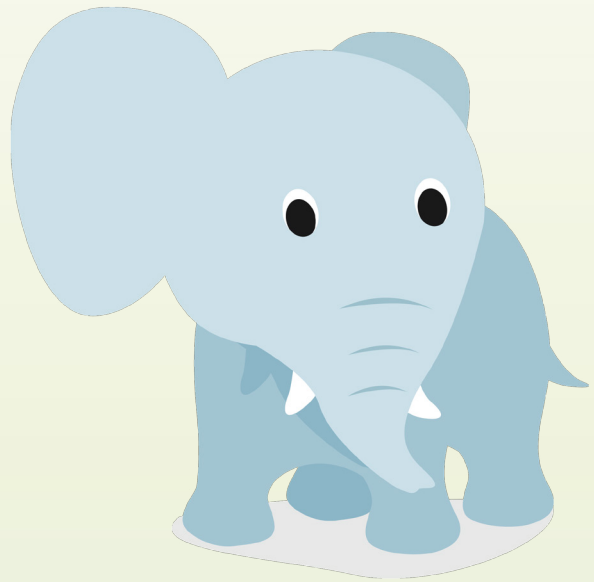


Pediatric seating system

Depending on the medical condition of a child, the pediatric seating system offers optimal comfort. The multiple adjustments and ease of use meet the needs of everyone. The attendant can adjust the seat of the child according to their anthropometric measurements.

This pediatric chair designed by Physipro offers many adjustment possibilities to optimize posture.

- 🐼 Armrests
- 🐼 Pelvic Supports
- 🐼 Seat and Cushion
- 🐼 Footrest
- 🐼 Headrest
- 🐼 Backrest and Cushion
- 🐼 Laterals



HINGES



TILT

With the hinge anchor, you can recline the backrest to the desired position.

The pediatric seating system comes with an anchor system and hardware enabling installation on Twigy wheelbase and vertical Hardy base.

This innovative design allows adjustment of all components according to the anthropometric measurements and depending on the pathological condition of the child. The pediatric seating system can follow the growth and development of children.

Adjustable footrest

The height of the footrest adjusts to a distance of 3".



Adjustable Armrests and Pelvic Supports

Pelvic supports are fixed on the armrests and adjust at the same time. An adjustment in width of 3" is possible.





Adjustable backrest

The backrest adjusts to 3" high to accomodate growth of the child.

Adjustable laterals

The laterals adjust to a width range of 1½" each and 3½" in height to support the position of the trunk.



In addition, the backrest cushion is provided with an extension to keep it increasing the height of the backrest.



Head Office

370, 10th Avenue South,
Sherbrooke, Quebec J1G 2R7
T. 819 823-2252 | 1 800 668-2252
F. 819 565-3337
info@physipro.com
www.physipro.com

European branch

Village des Entrepreneurs
461, Saint-Léonard
49000 Angers, France
T. 02 41 69 38 01
F. 02 41 69 43 32
contact@physipro.fr

