

Seating Solutions

Our seating and posture solutions

For over two decades, seating and positioning has been at the core of all that we do here at Physipro. Our focus has always been to develop and provide the best possible solutions for those with seating and positioning needs.

At Physipro, we rely heavily on feedback directly from the therapist in the field to provide solutions that are unique to every individual.

This catalog will help you to find the tools to successfully meet all of your seating and positioning needs.

Seating Line

TABLE OF CONTENTS

Physipro Back Supports

Valeo™ Back	p.4
HP2 Back	p.6
Axis™ Back	p.8
Premium Back	p.10

Physipro Seat Cushions

Brio Cushion	p.12
C3S Cushion	p.14
LXA Cushion	p.16
Ellipse Cushion	p.18
Zero-Pressure Cushion	p.20
Ultra Cushion	p.22
Physiair™ Cushion	p.24
Contour Insert Cushion	p.26
Resolve® Cushion	p.28

Physipro Wheelchair Accessories

p.31



Proudly made in Canada



VALEO™ BACK

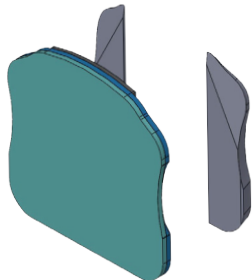
An ergonomic profile, unique laterals, high quality, and an affordable price: these are just a few advantages of the VALEO back.

Every component of the VALEO back has been designed with the user in mind. Its ergonomic shape provides an optimal adaptation to the user's anatomy.

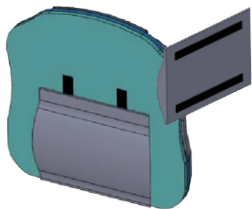
Multiple postural components, such as a headrest, lumbar support, and thoracolumbar wedges, can be easily installed. The four-point quick release hardware system makes the VALEO back easy to remove when folding the wheelchair.



Profiled Laterals
can be adjusted vertically, laterally, and at an angle.



Thoracolumbar Wedge
Installed on the sides of the backrest, these wedges compensate for or correct varying degrees of trunk rotation. Used bilaterally, they increase the support surface area, maximizing user comfort. The thoracolumbar wedge is adjustable in height, width and depth.



Lumbar Support
Designed to provide increased back support to compensate for lordosis or maintain an anterior pelvic tilt.

FEATURES AND OPTIONS

- 2 Versions**
Standard: More flexible
Heavy Duty: Thicker; allows installation of a headrest support.
- Back Shell** - Aluminum
- Cover** - Moisture-proof and machine washable.
- Hardware** - Fixed or removable

- Headrest Support** - Mounts directly to the VALEO back.
- Postural Components** - Optional inserts for improved ergonomics in certain cases of kyphosis or lordosis.

	Width	10", 12", 14", 16", 18", 20"
	Height	10", 12", 14", 16", 18", 20"
	Angle Adjustment	30° range ± 5°
	Product Weight	3 lb (approx.)
	Height of Laterals	4", 6", 7", 8", 10"
	Limited Warranty	2 years

HP2 BACK

A modern shape, dynamic design, and a variety of fabric colors are the HP2 back’s stand-out features.

The HP2 back’s contoured shell provides general lateral support and centering for users. It can be used to promote upright seating posture for improved function and comfort. This back is appropriate for users who have significant postural asymmetries and require postural support to maintain an upright, functional posture in their manual or power wheelchair. It also offers various combinations of depth, height, angle, and width, to optimize posture, range of motion, and user comfort.



Profiled Laterals
can be adjusted vertically, laterally, and at an angle.

Contoured Laterals
provide optimal trunk support.

Compatible with different types, shapes and sizes of back tubes: adapts to back tubes from ¾” to 1 1/8” diameter.



Different shapes and sizes adapt to the user’s requirements for optimum postural support.

FEATURES AND OPTIONS

- 3 Versions** - Contoured, Profiled , Sport

Back Shell - Aluminum

Cover - Moisture-proof and machine washable.

Hardware - Fixed or removable. The four-point mounting hardware offers more back support for increased stability.
- Headrest Support** - Mounts directly to the HP2 back.

Postural Components - Optional inserts for improved ergonomics in certain cases of kyphosis or lordosis.

Foam-in-Place - Zippered cover permits insertion of a foam-in-place support.

	Width	12", 14", 16", 18", 20"
	Height	12", 14", 16", 18", 20"
	Width (Sport Back)	12", 14", 16", 18"
	Height (Sport Back)	9"
	Angle Adjustment	20° to -10° ±5°
	Product Weight	6.5 lb
	Height of Laterals	4", 6", 7", 8", 10"
	Limited Warranty	2 years

AXIS™ BACK

Axis gives you options! It can be adjusted as often as necessary as an illness progresses or if postural abnormalities increase. The innovative Axis strapping system can be set up to provide lumbar support.

The Axis is more than just a tension-adjustable backrest; with its continuous adjustment system that can be set to precise heights and widths, it's a complete backrest system that helps to meet the specific needs of the user!



FEATURES AND OPTIONS

Laterals - Swing-away, adjustable or fixed with velcro.

Cover - Moisture-proof and machine washable. Fabric back allows folding for easy transport.

Postural Components - Optional inserts improve ergonomics in certain cases of kyphosis or lordosis.

Foam-in-Place - Zippered cover permits insertion of a foam-in-place support.



Adjustable straps all the way down the spine.



A velcro flap covers straps on the seat back.



The innovative Axis strapping system can be set for lumbar support, or for outward projection if a kyphotic position is needed.

Width	14" - 22"
Height	14" - 22"
Height of Laterals	4", 6", 7", 8", 10"
Limited Warranty	2 years

PREMIUM BACK

This adjustable-tension back has been designed to provide additional comfort and adjustability for clients with spinal deformities such as kyphosis. The 1" bilateral straps can be individually tightened or loosened as needed.



FEATURES AND OPTIONS

Laterals - Swing-away, adjustable or fixed with velcro. Adjustable in height, width, and depth. Can be installed on one side or both to facilitate transfers.

Cover - Moisture-proof and machine washable. Fabric back allows folding for easy transport.

Postural Components - Optional inserts improve ergonomics in certain cases of kyphosis or lordosis.

Foam-in-Place - Zippered cover permits insertion of a foam-in-place support.



Adjustable straps all the way down the spine.



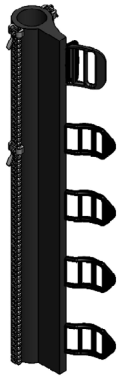
A velcro flap covers straps on the seat back.



Autoblock buckles are easy to open and close securely.



Different kinds of foam are available for optimum comfort.



Cane cover with front and back zippers allows the addition of laterals and/or to bypass a crossbar.

Width	14" - 22"
Height	14" - 22"
Height of Laterals	4", 6", 7", 8", 10"
Limited Warranty	2 years

BRIO CUSHION

The BRIO cushion is an economical cushion intended primarily for individuals who require moderate positioning and pressure relief. The cushion is designed for stability, to help reduce sliding and shearing.



Lightweight, soft, and slightly contoured



Also available with
Startex fabric

FEATURES AND OPTIONS

- Outer Cover** - Moisture-proof and machine washable.

Inner Cover - Moisture-proof and machine washable with a tough waterproof zipper.
- Composition** - High quality urethane.

Installation Options - Canvas cut, flat, or built in.

Width	14" - 24"
Depth	14" - 24"
Thickness	2 ½"
Lateral Wedge	¾" each side
Product Weight	1.7 lb
Limited Warranty	2 years

C3S CUSHION

This cushion’s main advantage is its construction, with layers of high-quality comfort and dispersion foam. This simple and comfortable cushion can be installed on a wheelchair or on any conventional seat. The top layer provides comfort and flexibility, while the lower layers of dispersion foam provide support and stability. For optimum posture, components such as an anti-thrust wedge, a pelvic obliquity wedge or an abduction pommel can be added.



FEATURES AND OPTIONS

Outer Cover - Moisture-proof and machine washable.

Inner Cover - Moisture-proof and machine washable with a tough waterproof zipper.

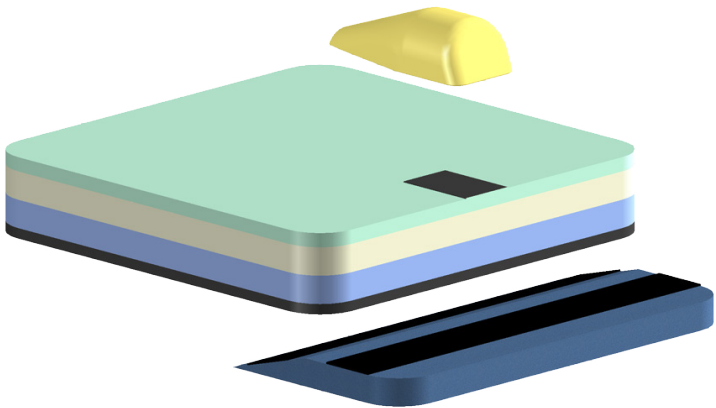
Composition - Made of a combination of comfort foam and dispersion foam.

Installation Options - Canvas cut, flat, or built-in.

Custom Shape - Hemiplegic, contoured depth, front wedge and low profile.



Provides durable support for clients with moderate postural needs



Various postural components can be added to the cushion

Width	14" - 24"
Depth	14" - 24"
Thickness	3"
Product Weight	3.2 lb
Limited Warranty	2 years

LXA CUSHION

This cushion is the perfect solution, providing total comfort and reducing pain caused by sliding. It also protects skin that may be thinning over bony prominences due to weakening of the gluteus maximus.



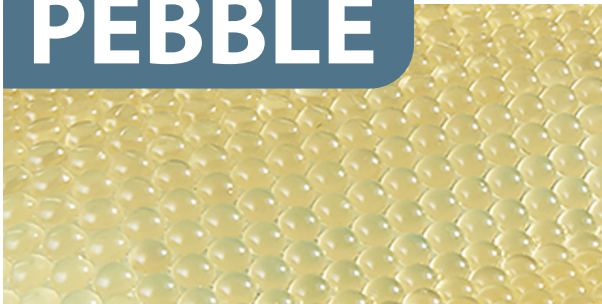
Eliminate moisture and wrinkling problems with the LXA cushion

CUBE



- Cube design reduces effects of shear.
- Drapes and adapts well to contoured surfaces.
- Channel design helps promote air circulation.

PEBBLE



- Pebbled design reduces effects of hammocking.
- Very soft, pliable surface is very inviting to the user.
- Drapes and adapts well to contoured surfaces.

FEATURES AND OPTIONS

Outer Cover - Moisture-proof and machine washable.

Inner Cover - Moisture-proof and machine washable with a tough waterproof zipper.

Composition - Action® viscoelastic polymer, specifically designed to prevent decubitus ulcers, with low-density molded urethane foam.

Installation Options - Canvas cut, flat, or built-in.

Custom Shape - Hemiplegic, contoured depth, front wedge and low profile.

Width	14" - 24"
Depth	14" - 24"
Thickness	2", 2 ½", 3", 3 ½"
Product Weight	5.9 lb
Limited Warranty	2 years

ELLIPSE CUSHION

This positioning cushion reduces pain caused by sliding, helps keep the pelvis in place, and micro-massages the body.



A high-quality cushion offering optimum stability and even weight distribution.

FEATURES AND OPTIONS

Outer Cover - Moisture-proof and machine washable.

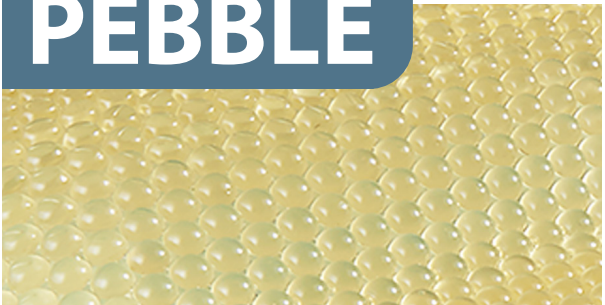
Inner Cover - Moisture-proof and machine washable with a tough, waterproof zipper.

Composition - Sunmate comfort layer covered with a thick layer of Pebble gel and a urethane base.

Installation Options - Canvas cut, flat, or built-in.

Custom Shape - Hemiplegic, contoured depth, front wedge and low profile.

PEBBLE



- Pebbled design reduces effects of hammocking.
- Very soft, pliable surface is very inviting to the user.
- Drapes and adapts well to contoured surfaces.

Width	14" - 24"
Depth	14" - 24"
Thickness	± 3"
Product Weight	6.2 lb
Limited Warranty	2 years

ZERO PRESSURE CUSHION

The cushion is shaped to reduce pressure on bony prominences (ischium and coccyx) and to distribute weight over the entire cushion surface. The ischial ridge provides effective support to prevent the pelvis from sliding forward (backward tilt), and provides lateral support for better postural balance.



Zero-pressure cushion shape, scientifically designed using pressure sensors.

FEATURES AND OPTIONS

Outer Cover - Moisture-proof and machine washable.

Inner Cover - Moisture-proof and machine washable with a tough waterproof zipper.

Composition - Dispersion foam (viscoelastic) covering to enhance comfort and medium-density injected urethane foam for both the firmness and flexibility required for optimum comfort and stability.

In Options - Customized gel pad in the seat well.

Installation Options - Canvas cut, flat, or built-in.

Custom Shape - Hemiplegic, contoured depth, front wedge, and low profile.

	Width	14" - 24"
	Depth	14" - 24"
	Thickness	2 ½"
	Product Weight	3.23 lb
	Limited Warranty	2 years

ULTRA CUSHION

The Ultra cushion is a comfortable and clinically effective positioning cushion that offers better control of the distribution of pressure on bony prominences (ischium and coccyx), while distributing weight over the cushion surface. It helps optimize the user’s posture by preventing the pelvis from sliding forward (backward tilt) or laterally.



FEATURES AND OPTIONS

Outer Cover - Moisture-proof and machine washable.

Inner Cover - Moisture-proof and machine washable with a tough waterproof zipper.

Composition - Dispersion-foam (viscoelastic) covering to enhance comfort and medium-density injected urethane foam to offer both the firmness and flexibility required for comfort and stability. Memory foam in the seat well, allowing absorption and compliance with the ischial ridge.

In Options - Customized gel pad in the seat well.

Installation Options - Canvas cut, flat, or built-in.

Custom Shape - Hemiplegic, contoured depth, front wedge, and low profile.



Ultra comfort and Ultra stability

Promotes blood flow to tissues.

Better support for patients with reduced muscle tone.



Latex layer also available for more firmness.

	Width	14" - 24"
	Depth	14" - 24"
	Thickness	3" (approx.)
	Product Weight	3.90 lb
	Limited Warranty	2 years

PHYSIAIR™ CUSHION

The Physiair is made of high-resilience urethane foam. Like certain mattresses, half the thickness of the foam layer is grooved to create cubes that act like individual springs. The resulting cells operate independently to closely follow the contours of the body.



FEATURES AND OPTIONS

Outer Cover - Moisture-proof and machine washable.

Inner Cover - Moisture-proof and machine washable with a tough, waterproof zipper.

Other Features - Highly breathable and maintenance-free; improves stability and reduces fatigue caused by constant vibration.

Composition - High-resilience urethane foam and a Stimulite® honeycomb breathable sheet.

Installation Options - Canvas cut, flat, or built-in.

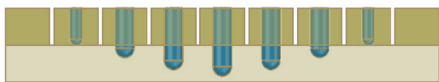
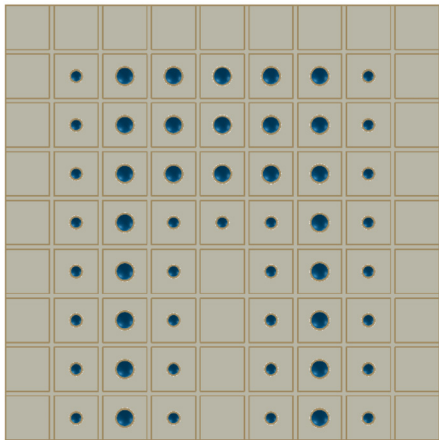
Custom Shape - Hemiplegic, contoured depth, front wedge, and low profile.

Fabric Color Choices - Black or blue.



Functional stability and maximum breathability

Physiair Cushion



Rear View

The Physiair difference

The Physiair is set apart by its cylindrical cavities. The varying sizes of the cavities produce different degrees of firmness, with larger cavities in the seat well allowing the user to sink in further. This provides better functional stability and reduces pressure in critical areas.

All our products are made in Canada but please note that the Stimulite® honeycomb breathable sheet is made in the USA by Supracor and that Supracor and Stimulite are registered trademarks of Supracor, Inc. in San Jose, CA.

Width	14" - 24"
Depth	14" - 24"
Thickness	2 ½", 3", 3½", 4", 5"
Product Weight	2.13 lb
Limited Warranty	2 years

CONTOUR INSERT CUSHION

The Contour Insert seat cushion meets the user’s positioning needs in comfort. This cushion features a space in the pelvic region in which an extra pad can be inserted (gel, air cell, various foams) to adapt the cushion to the patient’s skin condition. The contoured foam base is designed to provide coccyx and sacral relief.



FEATURES AND OPTIONS

Outer Cover - Moisture-proof and machine washable.

Inner Cover - Moisture-proof. Certified latex free and is made of transparent polyurethane.

Composition - Made of urethane foam; includes a selection of four cushion inserts.

Installation Options - Canvas cut, flat, or built-in.

Custom Shape - Hemiplegic, contoured depth, front wedge, and low profile.



This hybrid cushion’s removable inserts allow it to be customized and adapted to provide the right level of protection.



ROHO® adjustable air cell insert



Cube gel top layer and urethane foam base



SunMate top layer and urethane foam base



Temper T36 top layer and Temper T38 foam base

	Width	15" - 20"
	Depth	15" - 20"
	Thickness	2" - 3" - 4"
	Product Weight	3.19 lb (foam base)
	Limited Warranty	2 years

RESOLVE® CUSHION

The Resolve cushion's layers of multi-density foam allow deeper immersion of the ischial tuberosities, enhanced envelopment, and excellent pressure redistribution. Positioning contours at the lateral hip and lateral thighs help promote a stable seated posture. The Physipro Resolve cushion is intended for wheelchair users who currently have or may be at risk of pressure sores and need positioning assistance for wheelchair seating.



FEATURES AND OPTIONS

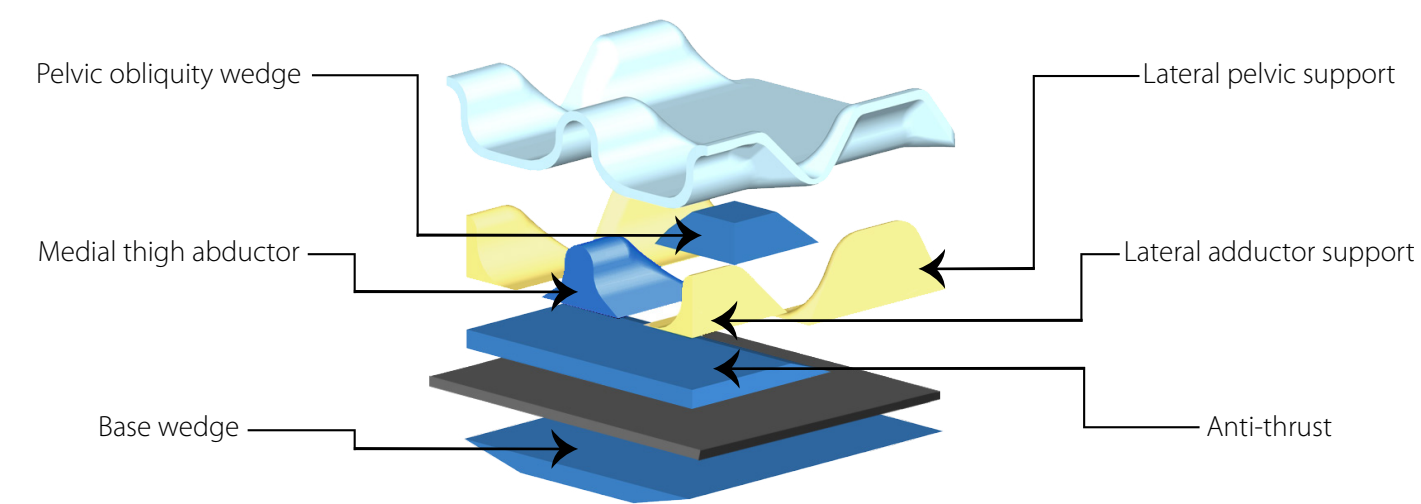
- Outer Cover** - Moisture-proof and machine washable.
- Inner Cover** - Moisture-proof. Certified latex free and is made of transparent polyurethane.
- Composition** - Custom choice.
- Installation Options** - Canvas cut, flat, or built-in.

Custom designed to fit the user's exact needs



Choice of postural components

- Anti-thrust:** Reduces sliding, controls pelvic rotation and posterior pelvic tilt.
- Pelvic obliquity wedge:** Decreases or compensates for pelvic obliquities.
- Lateral pelvic support:** Facilitates postural installation and controls pelvic rotation.
- Medial thigh abductor:** Controls lower limb adduction.
- Lateral adductor support:** Prevents thigh abduction.
- Base wedge:** For adding posterior/anterior or lateral wedging underneath the seat cushion.

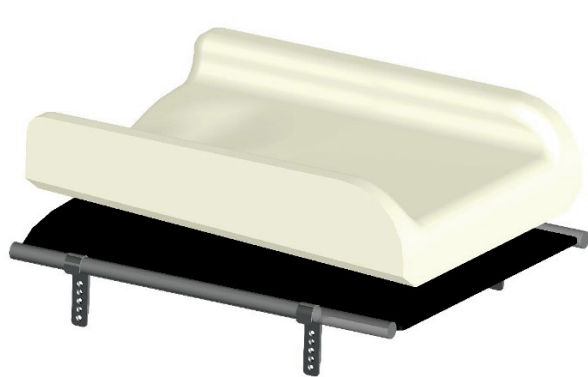


Width	14" - 24"
Depth	14" - 24"
Thickness	N/A
Product Weight	3.5 lb (approx.)
Limited Warranty	2 years

INSTALLATION OPTIONS

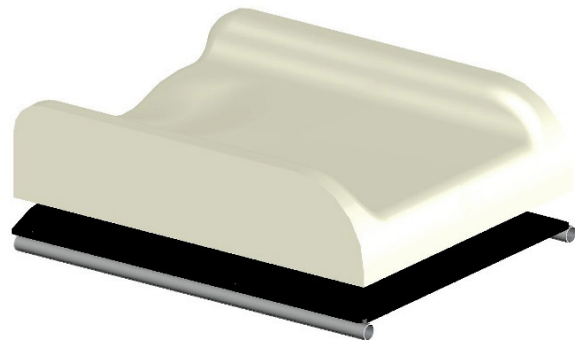
The cushions are installed according to the interface and are offered in a range of formats shown in the table below.

Installation on **built-in rigid plate**



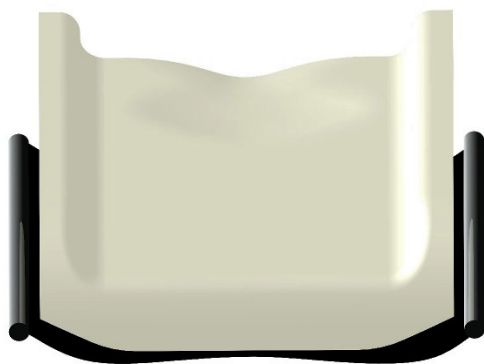
Built-in
Installed on a rigid plate attached by mounting hooks, the cushion is bevelled laterally for a perfect fit with the interface.

Installation on **full-width rigid plate**



Flat
On a seat plate attached to the interface rails, this installation allows a wider surface area for the cushion by a few centimeters.

Installation on **canvas fabric**

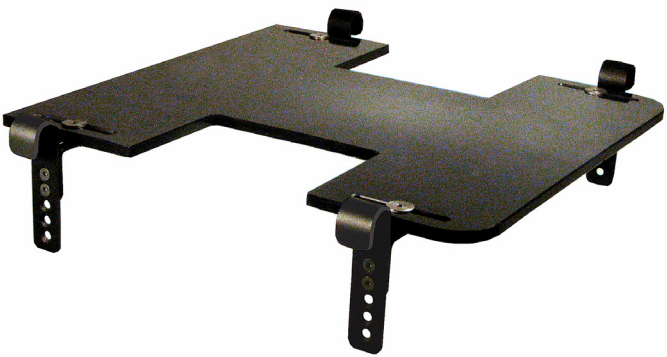


Sling
With a sling cut, the cushion is molded to the fabric by lateral bevelling. A reinforcing plate incorporated in the center provides stability and eliminates any anti-sling effect.

PHYSIPRO WHEELCHAIR ACCESSORIES

Cushion Rigidizer

Eliminates the hammock effect that sling upholstery can cause, providing a firm stable base of support. With mounting hooks that can be set for the desired seat-to-floor height and tilt angle, the cushion rigidizer helps maintain a functional environment and proper posture.



Head Positioning

Headrest Pad

Physipro headrest supports give comfortable support in the occipital area. Each type meets specific postural needs, whether minor, moderate, or more complicated. Padded, with a machine washable removable cover.



Headrest Support

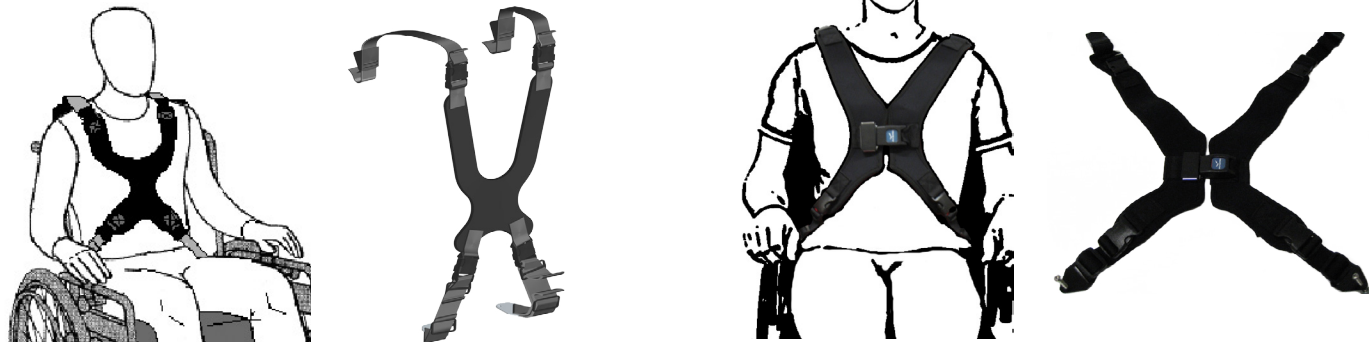
Physipro headrest supports allow headrest height, angle, and depth to be adjusted. They can be installed on a rigid backrest or a tension bar. Designed for ease of adjustment and modification.



Chest Support

Chest Support

These chest supports provide necessary trunk support without compromising shoulder movement.



Sizes Available



Pelvic Positioning

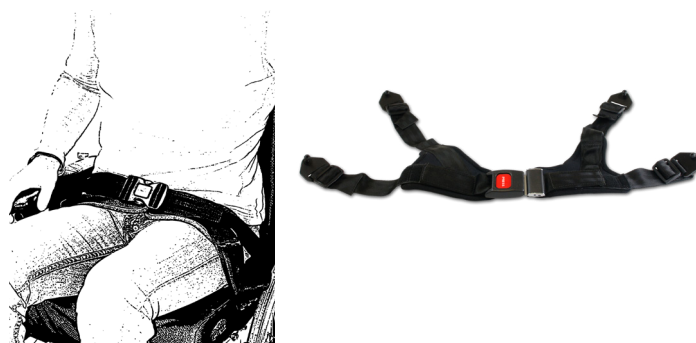
Two-Point Padded Hip Belt

This pelvic lap belt, designed for proper pelvic alignment, features comfort padding for proper pressure distribution and added comfort.



Padded Y-Style Four-Point Belt

This padded hip belt is attached to the wheelchair in four places. This belt is ideal for preventing anterior pelvic tilt and pelvic rotation.



Abduction

Abduction Pommel and Mechanism

This postural component is used in cases of severe adduction. Made of high-density foam and topped with dispersion foam, the abduction pommel can be attached to various types of mechanisms.



Lateral Adductor Support

The lateral adductor support mechanism is used to reduce lower limb abduction. This system is equipped with clamping blocks, adjusts to the desired angle, and can be placed on either the right or left side. The adductor can be installed bilaterally.



Single Knee Stabilizer

Provides support and stability for the knee to control sliding of the pelvis. Fits either 7/8" or 1" tubing.



Knee Protector

Clips on to most footrest supports and is used in cases of abduction to keep the limbs in alignment.



Amputee Support

Provides optimum alignment of the lower leg stump to ensure both comfort and functionality. It is installed on the rigid seat plate and on the seat rail with an add-on bar. Entirely customizable. Can be installed to the right or to the left. Installed directly on the footrest.



Foot Box

Used to ensure proper containment of the feet while allowing freedom of movement. Adjustable height and tilt angle.



Foot Support

Keeps the foot securely in position while providing maximum comfort.



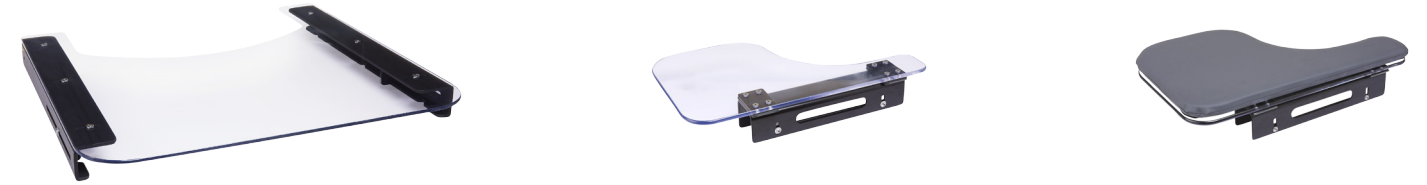
Heel Support

Used in cases of spasticity, this flexible corrective heel support is available in two base sizes and accommodates all sizes of foot using adjustable straps.



Full Tray and Half Tray

These trays mount on an aluminum slide rail and fit all Physipro armrests as well as most other armrests. Optional swing-away half tray. Comfortable tray cushion available.



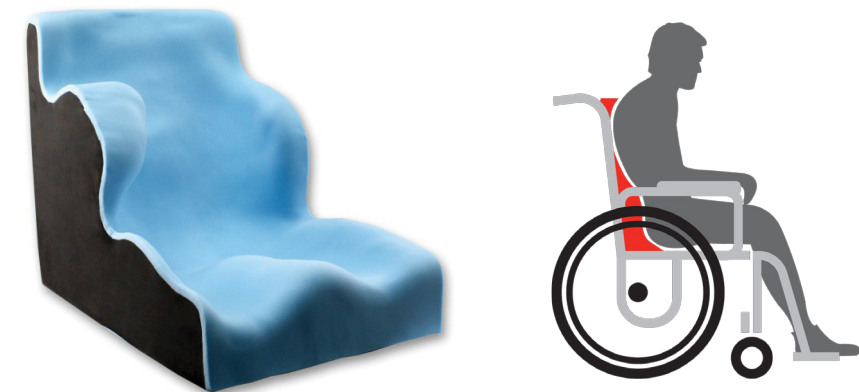
Upper-Limb Trough Support

Provides unequalled protection and comfort for the impaired upper limb. The anchoring mechanism allows continuous adjustment of lateral/oblique positioning. A swing-away section underneath the hand allows table access.



Liquid SunMate Foam-in-Place Seating (FIPS)

FIPS adjusts to a person's unique shape in just five minutes, providing advanced posture control and pressure relief almost instantly.





Canada

370, 10e Avenue Sud
Sherbrooke (Quebec) J1G 2R7
Canada

1 800 668-2252
info@physipro.com
www.physipro.com

Europe

Village des entrepreneurs
461, rue Saint-Léonard
49000 Angers
France

02 41 69 38 01
contact@physipro.fr