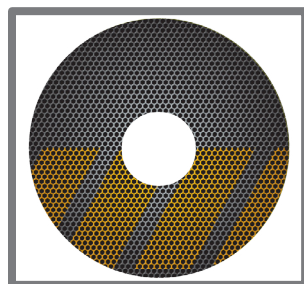


# PHYSIPRO

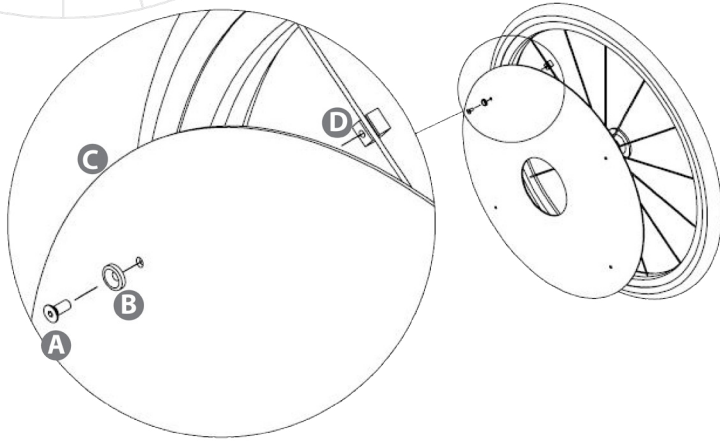
## User Manual



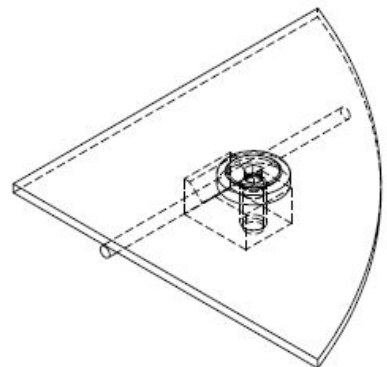
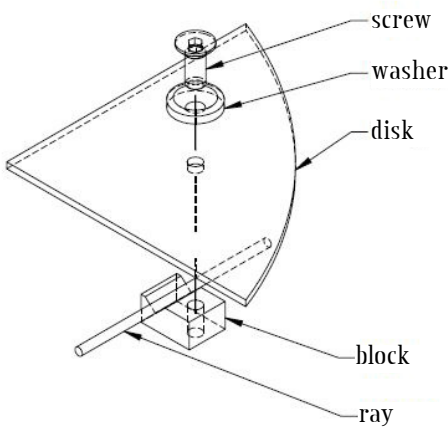
# Follow these instructions to install

- 1) Insert the screw **(A)** inside the washer **(B)** and through the spoke guard **(C)**
- 2) Tighten the screw **(A)** in the block **(D)** keep the wheel spoke tightened between the block and the spoke guard.
- 3) Repeat the same procedure as described above for each screw in order to firmly tighten the spoke guard to the wheel.

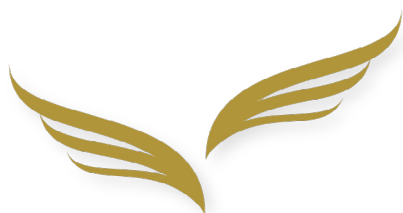
Visit the website to see all our spoke guard models:  
<http://www.physipro.com/PR/home.html>



## Result



## Assembled view



# PHYSIPRO

## Seating and Mobility Solutions

### Canada

370, 10th South Ave.  
Sherbrooke (Quebec) J1G 2R7  
Canada

1 800 668-2252  
[info@physipro.com](mailto:info@physipro.com)

### Europe

Village des entrepreneurs  
461, rue Saint-Leonard  
49000 Angers  
France

02 41 69 38 01  
[contact@physipro.fr](mailto:contact@physipro.fr)