

Discover the

EASY FIT

cushion!



PHYSIPRO®

The key to long-term
seating comfort.

Specifically designed to envelop the body, this innovative cushion aims to relieve pressure and improve overall comfort.

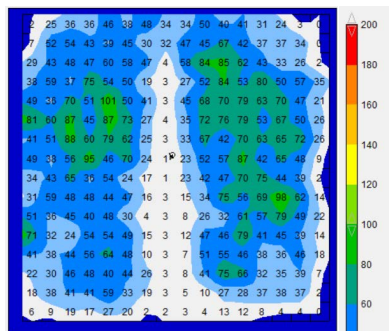
The **EASY FIT**, our newest ergonomic cushion, offers a level of comfort similar to that of a custom-made molded seat cushion.

Built with pre-determined anatomical shapes, this contoured cushion is made with high-quality injected urethane foam, the **EASY FIT** ensures long-lasting postural support and stability by redistributing pressure evenly over the cushions entire surface.

The pre-contoured design of the cushion was determined after an in-depth study of the anthropomorphic measurements of a diverse group of individuals and following extensive pressure mapping tests.

The **EASY FIT** can help a wide variety of individuals by alleviating pressure and providing overall better postural support, without the need of customization.

Pressure mapping test result



COMFORT MADE EASY WITH THE **EASY FIT!**

Three models are available to better accommodate different body types, levels of sensitivity and personal preferences.

Choose the model that is right for you:

- 1 The Easy Fit with a soft memory foam top layer reduces transcutaneous pressure. Soft memory foam adapts to the body to provide a greater surface contact area.



- 2 The Easy Fit with soft memory foam and gel insert provides greater skin protection to bony prominences. The gel insert is shaped specifically to reduce pressure at pelvic loading area and protect the ischium and coccyx.



- 3 If you're looking for a deeper immersion, try the Easy Fit with a viscoelastic top layer instead of soft memory foam. This allows the pelvis to sink further into the cushion, providing more pelvic stability and pressure relief.



Available in 26 Standard Sizes:

14" x 14"	15" x 16"	16" x 16"	17" x 16"	18" x 16"	19" x 16"	20" x 16"
14" x 16"	15" x 17"	16" x 17"	17" x 17"	18" x 17"	19" x 17"	20" x 17"
	15" x 18"	16" x 18"	17" x 18"	18" x 18"	19" x 18"	20" x 18"
				18" x 19"	19" x 19"	20" x 19"
				18" x 20"	19" x 20"	20" x 20"



PHYSIPRO®

Canada

370, 10th Avenue South
Sherbrooke (Quebec)
J1G 2R7 Canada
1 800 668-2252

order@physipro.com
www.physipro.com

Europe

Village des entrepreneurs
461, rue Saint-Léonard
49000 Angers - France

T. 02 41 69 38 01
F. 02.41.69.43.32
contact@physipro.fr