



# Lowers & Uppers Body Positioning

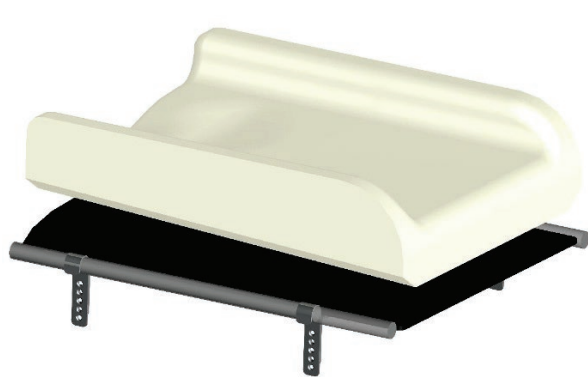
Our posture solutions



# INSTALLATION OPTIONS

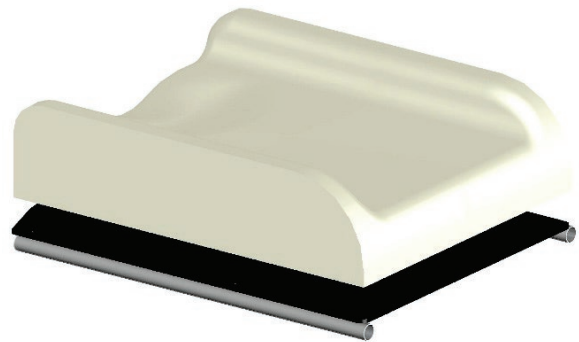
The cushions are installed according to the interface and are offered in a range of formats shown in the table below.

Installation on **built-in rigid plate**



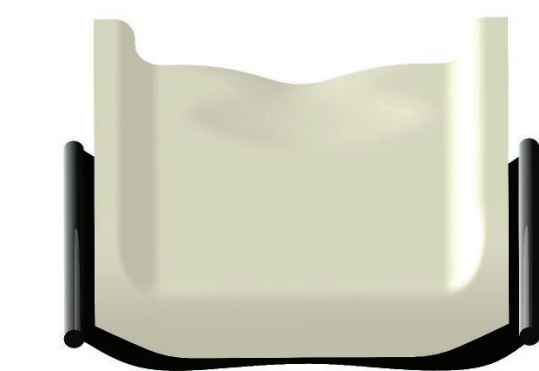
**Built-in**  
Installed on a rigid plate attached by mounting hooks, the cushion is bevelled laterally for a perfect fit with the interface.

Installation on **full-width rigid plate**



**Flat**  
On a seat plate attached to the interface rails, this installation allows a wider surface area for the cushion by a few centimeters.

Installation on **canvas fabric**



**Sling**  
With a sling cut, the cushion is molded to the fabric by lateral bevelling. A reinforcing plate incorporated in the center provides stability and eliminates any anti-sling effect.

# PHYSIPRO WHEELCHAIR ACCESSORIES

## Cushion Rigidizer

Eliminates the hammock effect that sling upholstery can cause, providing a firm stable base of support. With mounting hooks that can be set for the desired seat-to-floor height and tilt angle, the cushion rigidizer helps maintain a functional environment and proper posture.



## Head Positioning

### Headrest Pad

Physipro headrest supports give comfortable support in the occipital area. Each type meets specific postural needs, whether minor, moderate, or more complicated. Padded, with a machine washable removable cover.



### Headrest Support

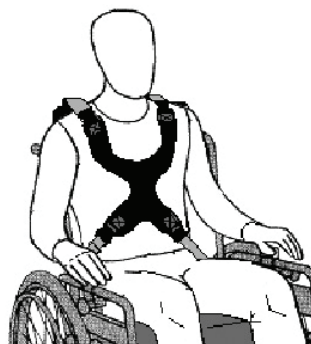
Physipro headrest supports allow headrest height, angle, and depth to be adjusted. They can be installed on a rigid backrest or a tension bar. Designed for ease of adjustment and modification.



## Chest Support

### Chest Support

These chest supports provide necessary trunk support without compromising shoulder movement.



### Chest Support with Center Buckle

Allows for precise adjustment and facilitates transfers.

### Sizes Available



Men



Women

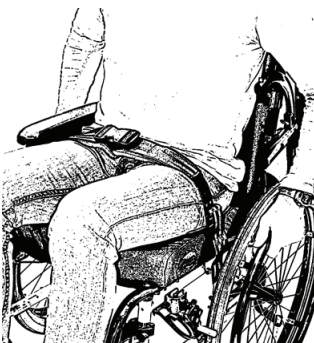


Children

## Pelvic Positioning

### Two-Point Padded Hip Belt

This pelvic lap belt, designed for proper pelvic alignment, features comfort padding for proper pressure distribution and added comfort.



### Padded Y-Style Four-Point Belt

This padded hip belt is attached to the wheelchair in four places. This belt is ideal for preventing anterior pelvic tilt and pelvic rotation.



## Abduction

### Abduction Pommel and Mechanism

This postural component is used in cases of severe adduction. Made of high-density foam and topped with dispersion foam, the abduction pommel can be attached to various types of mechanisms.



Push Button



Horizontal Release



Vertical Release



Latch



Abduction Pommel

### Lateral Adductor Support

The lateral adductor support mechanism is used to reduce lower limb abduction. This system is equipped with clamping blocks, adjusts to the desired angle, and can be placed on either the right or left side. The adductor can be installed bilaterally.



### Single Knee Stabilizer

Provides support and stability for the knee to control sliding of the pelvis. Fits either 7/8" or 1" tubing.



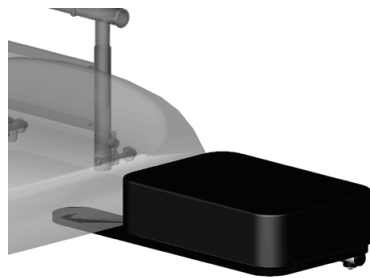
### Knee Protector

Clips on to most footrest supports and is used in cases of abduction to keep the limbs in alignment.



## Amputee Support

Provides optimum alignment of the lower leg stump to ensure both comfort and functionality. The amputee support is installed on the rigid seat plate and on the seat rail with an add-on bar. Made of plastazote, medium memory foam, viscose and a constructa foam pointed crural wedge of 1.5 inches. Its cover is made of Oxford, Triptex U and Air Knit fabrics.



Standard Amputee Support



Multi-adjustable Amputee Support

## Foot Box

Used to ensure proper containment of the feet while allowing freedom of movement. Adjustable height and tilt angle.



## Foot Support

Keeps the foot securely in position while providing maximum comfort.



## Full Tray and Half Tray

These trays mount on an aluminum slide rail and fit all Physipro armrests as well as most other armrests. Optional swing-away half tray. Comfortable tray cushion available.



## Upper-Limb Trough Support

Provides unequalled protection and comfort for the impaired upper limb. The anchoring mechanism allows continuous adjustment of lateral/oblique positioning. A swing-away section underneath the hand allows table access.





## Canada

370, 10e Avenue Sud  
Sherbrooke (Quebec) J1G 2R7  
Canada

1 800 668-2252  
[info@physipro.com](mailto:info@physipro.com)  
[www.physipro.com](http://www.physipro.com)

## Europe

Village des entrepreneurs  
461, rue Saint-Léonard  
49000 Angers  
France

02 41 69 38 01  
[contact@physipro.fr](mailto:contact@physipro.fr)