

# WHEELCHAIR

## MOBILITY



Tilt-in-Space Neox<sup>®</sup>

Pediatric Tilt-in-Space  
Spiral<sup>™</sup>

Folding Manual  
Wheelchair XL5<sup>™</sup> & XL5ci<sup>™</sup>

Wheelchair Parameters

Spoke-Guard



**PHYSIPRO<sup>®</sup>**  
Seating and mobility solutions

# TABLE OF CONTENT

4 to  
11

TILT-IN-SPACE NEOX®



12 to  
17

PEDIATRIC  
TILT-IN-SPACE SPIRAL™



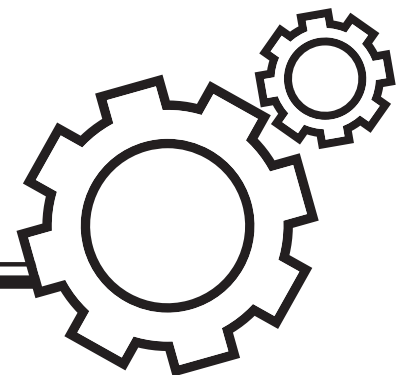
18 to  
25

FOLDING MANUAL  
WHEELCHAIR XL5™ & XL5CI™



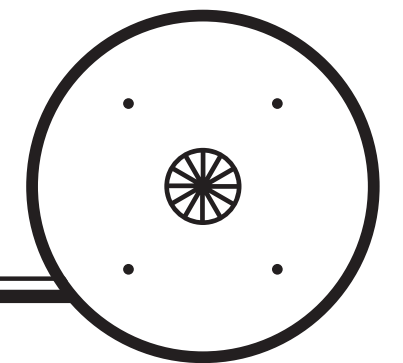
26 to  
31

WHEELCHAIR  
PARAMETERS



32 to  
35

SPOKE-GUARD





**TILT-IN-SPACE**  
**NEOX<sup>®</sup>**





The multitude of adjustments provided by the Neox®, enables various wheelchair configurations and greatly facilitate reallocation.

## TECHNICAL SPECIFICATIONS

Wheelchair type	Tilt-in-Space Wheelchair
Composition	Aluminium
Funding Information	Pediatric: WM0001312 Adult: WM0001255
Back Height	12" to 25"
Seat Depth	14" to 22"
Seat Width	Small Frame: 14" to 19" Extended Frame: 19" to 22" HD Frame: 20" to 26"
Seat-to-floor Height	13" to 20"
Overall Length	42"
Overall Width	Seat width + 9 ¾"
Caster Diameter	4 Wheel Neox®: 5", 6", 8"
Propulsion Wheel Diameter	4 Wheel Neox®: 12", 20", 22", 24"
Transport Weight*	4 Wheel Neox®: 50 lb (22,68 kg)
Device Weight	4 Wheel Neox®: 62 lb (28,12 kg)
Maximum Weight Capacity	Standard Neox®: 250 lb (115 kg) HD Neox®: 350 lb (160 kg)
Backrest Angle	85° to 115°
Reclining back with gas cylinder	130° Max
Tilt**	Standard Neox®: -5° to 46° Neox® Dynamic Tilt: -2,5° to 30° "U" Type: 8" to 13" "U" Type lowered: 6" to 8" "U" Type elevated: 13 ¼" to 16" "T" Type: 7 ½" to 12"
Armrests	
Footrests	60°, 70°, 90°
Elevating Legrests	14" to 19"

\*Weight based on 16" x 16" tilt-in-space with all standard features  
\*\*Some configurations may limit the tilt. See the user manual for more details.

## SEAT-TO-FLOOR HEIGHT BY WHEEL AND CASTER DIAMETERS - 4 Wheel Neox®

Wheels	Casters	Seat-to-Floor Height	Seat-to-Floor Height with Dynamic Tilt option
12"	S5"	13" to 18"	13" to 17"
	S6"	14" to 19"	14" to 18"
	S8"	15" to 20"	15" to 19"
	S5"	13" to 18"	13" to 17"
20"	D5"	13"	13"
	S6"	13" to 18"	13" to 17"
	S6"	14" to 19"	14" to 18"
	D6"	14" to 19"	14" to 18"
22"	S6"	14" to 19"	14" to 18"
	D6"	14" to 19"	14" to 18"
	S8"	15" to 20"	15" to 19"
24"	D6"	15" to 20"	15" to 19"
	S8"	15" to 20"	15" to 19"

S5": Caster with Standard Fork  
D5"-D6": Caster with Dynamic Fork

## OTHERS OPTIONS

Backrest	Dynamic Backrest Tension Bar Angle Adjustable Stroller Bar
Tilt	Power tilt
Forks	Dynamic Caster Forks Rear Casters Tilt Mechanism
Brake	Foot Operated Brake
Wheels	Natural Fit Transparent Spoke-Guard
Footplates	One Piece Footplate
Accessories	Oxygen Tank Holder Cane Holder

## ADP LIST CODE

Device Type	Device Code
Elevating Legrests (pair)	WAMK
MW - Angle Adjustable Footplates (pair)	WAMJ
MW - Heavy Duty Model, Client Weight Exceeds 250 lb	WAMF
MW - Oxygen Tank Holder	WAMX
MW - Seat Depth Required is Greater than 18"	WAMB
MW - Seat Width Required is Greater than 18"	WAMA
Plastic Coated Handrims	WAMO
Quick Release Axles (pair)	WAMU
Recliner Option	WAMI
Spoke Protectors (pair)	WAMP
Standard Manual Wheelchair Frame with Manual Dynamic Tilt	WANA
Stroller Handles/Paediatric	WAMW



Made from an aluminium alloy, the Neox® frame is durable, lightweight and corrosion-resistant.

## STURDY FRAME



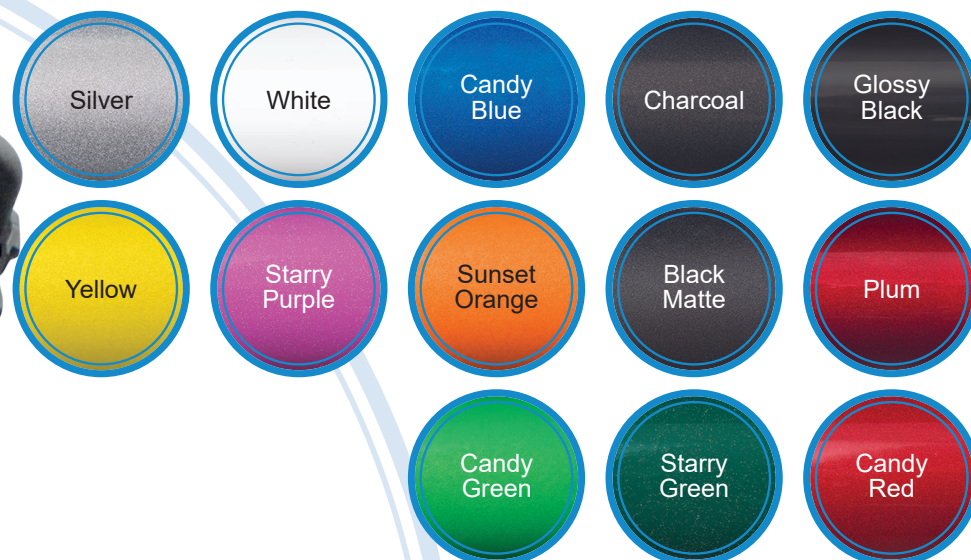
The overall width of the Neox® is designed to facilitate the use of paratransit services. The proximity of the central wheels to the frame facilitate propulsion.

## ADAPTIVE DIMENSIONS





## COLOURS



### DYNAMIC BACKREST

The Neox® offers as a option an adjustable dynamic backrest that protects the patient from injury during involuntary movements and helps reduce wheelchair damage.

### ADAPTIVE DESIGN

The elongated telescopic design of the Neox® frame was developed with the highest degree of precision. Fast and accurate configuration is effortlessly achieved by sliding the telescopic tubing to the desired position. For reallocation programs, this feature offers substantial economic benefits.

Without Dynamic Tilt Option



With Dynamic Tilt Option



The armrests of the Neox® offer greater solidity and are height adjustable. The U-shaped design of the armrest allows the user to securely lean side-to-side to reduce pressure on the pelvis and facilitates pressure relief push-ups.

### ARMRESTS



### DYNAMIC TILT OPTION

A Dynamic Tilt option is available. This option ensures that the patient's knees are at a consistent height when the wheelchair is in a tilted position and that the patient's feet can easily reach the floor. This enables the patient to propel themselves with their lower limbs regardless of the degree of inclination of their wheelchair.







The multitude of adjustments provided by the Neox®, enables various wheelchair configurations and greatly facilitate reallocation.

TECHNICAL SPECIFICATIONS

Wheelchair type	Tilt-in-Space Wheelchair
Composition	Aluminium
Funding Information	Pediatric: WM0001312 Adult: WM0001255
Back Height	12" to 25"
Seat Depth	14" to 22"
Seat Width	Small Frame: 14" to 19" Extended Frame: 19" to 22" HD Frame: 20" to 26"
Seat-to-floor Height	6 Wheel Neox®: 14" to 20"
Overall Length	42"
Overall Width	Seat width + 9 ¾"
Caster Diameter	6 Wheel Neox®: 6"
Propulsion Wheel Diameter	6 Wheel Neox®: 20", 22", 24"
Transport Weight*	6 Wheel Neox®: 55 lb (24,95 kg) 6 Wheel Neox® Dynamic Tilt: 54 lb (24,50 kg)
Device Weight	6 Wheel Neox®: 67 lb (30,40 kg)
Maximum Weight Capacity	Standard Neox®: 250 lb (115 kg) HD Neox®: 350 lb (160 kg)
Backrest Angle	85° to 115°
Reclining back with gas cylinder	130° Max
Tilt**	Standard Neox®: -5° to 46° Neox® Dynamic Tilt: -2,5° to 30° "U" Type: 8" to 13" "U" Type lowered: 6" to 8" "U" Type elevated: 13 ¼" to 16" "T" Type: 7 ½" to 12"
Armrests	
Footrests	60°, 70°, 90°
Elevating Legrests	14" to 19"

\*Weight based on 16" x 16" tilt-in-space with all standard features  
\*\*Some configurations may limit the tilt. See the user manual for more details.

SEAT-TO-FLOOR HEIGHT BY WHEEL AND CASTER DIAMETERS - 6 Wheel Neox®

Wheels	Casters	Seat-to-Floor Height	Seat-to-Floor Height with Dynamic Tilt option
20"	D5"	13"	13"
	D6"	14" to 19"	14" to 18"
22"	D6"	14" to 19"	14" to 18"
24"	D6"	15" to 20"	15" to 19"

S5": Caster with Standard Fork  
D5"-D6": Caster with Dynamic Fork

OTHERS OPTIONS

Backrest	Dynamic Backrest Tension Bar Angle Adjustable Stroller Bar
Tilt	Power tilt
Forks	Dynamic Caster Forks Rear Casters Tilt Mechanism
Brake	Foot Operated Brake
Wheels	Natural Fit Transparent Spoke-Guard
Footplates	One Piece Footplate
Accessories	Oxygen Tank Holder Cane Holder

ADP LIST CODE

Device Type	Device Code
Elevating Legrests (pair)	WAMK
MW - Angle Adjustable Footplates (pair)	WAMJ
MW - Heavy Duty Model, Client Weight Exceeds 250 lb	WAMF
MW - Oxygen Tank Holder	WAMX
MW - Seat Depth Required is Greater than 18"	WAMB
MW - Seat Width Required is Greater than 18"	WAMA
Plastic Coated Handrims	WAMO
Quick Release Axles (pair)	WAMU
Recliner Option	WAMI
Spoke Protectors (pair)	WAMP
Standard Manual Wheelchair Frame with Manual Dynamic Tilt	WANA
Stroller Handles/Paediatric	WAMW



6 WHEELS CONFIGURATION

The center position of the propulsion wheels, reduces the turning radius, provides more stability and facilitates manual propulsion while in a tilted position, increasing the patient's autonomy.







**PEDIATRIC  
TILT-IN-SPACE  
SPIRAL<sup>TM</sup>**





An Evolution in Tilt-In-Space Wheelchair Engineering

TECHNICAL SPECIFICATIONS\*\*

Wheelchair Type***	Pediatric Tilt-In-Space Wheelchair
Composition	Aluminium
Back Height	16" to 25"
Seat Depth	Standard Frame: 10" to 13" Extended Frame: 13" to 16"
Seat Width	Standard Frame: 10" to 13" Extended Frame: 13" to 16"
Seat-to-Floor Height	14" to 19"
Overall Length	40"
Overall Width	Seat width + 8 ¾"
Caster Diameter	5", 6"
Propulsion Wheel Diameter	20", 22"
Transport Weight	36 lb (16,3 kg)
Device Weight	54 lb (24,5 kg)
Maximum Weight Capacity	150 lb (68 kg)
Backrest Angle	85° to 120°
Tilt	0° to 45°
Armrests	"T" Type: 6 ½" to 14"
Footrests	60° : 6" to 14" 70° : 6" to 14" 90° : 6" to 14"
Elevating Legrests	14" to 19"

\* Depths of 10" and 11" are available with moved forward backrest anchors.  
\*\* Based on a standard 14" X 14" Spiral™.  
\*\*\* Median Driving only

SEAT-TO-FLOOR HEIGHT ACCORDING TO THE WHEELS DIMENSIONS

Wheels	Front Casters	Rear Casters	Seat-to-Floor Height
20"	6" D5"	6"	14" to 18"
22"	6" D6"	6"	15" to 19"

OTHERS OPTIONS

Backrest	Folding Backrest Tension Bar Angle Adjustable Stroller Bar
Forks	Rear Caster Tilt Mechanism Dynamic Caster Forks
Wheels	Natural Fit Transparent Spoke-Guard
Footplate	One Piece Footplate

FOLDING BACKREST, HEIGHT AND ANGLE ADJUSTABLE

The folding aspect of the backrest is very convenient for storing the Spiral™ inside the car. Lightweight and very easy to adjust, the backrest is adjustable in angle of 85 ° to 120 ° (by 5 ° increments).



6 WHEEL CONFIGURATION

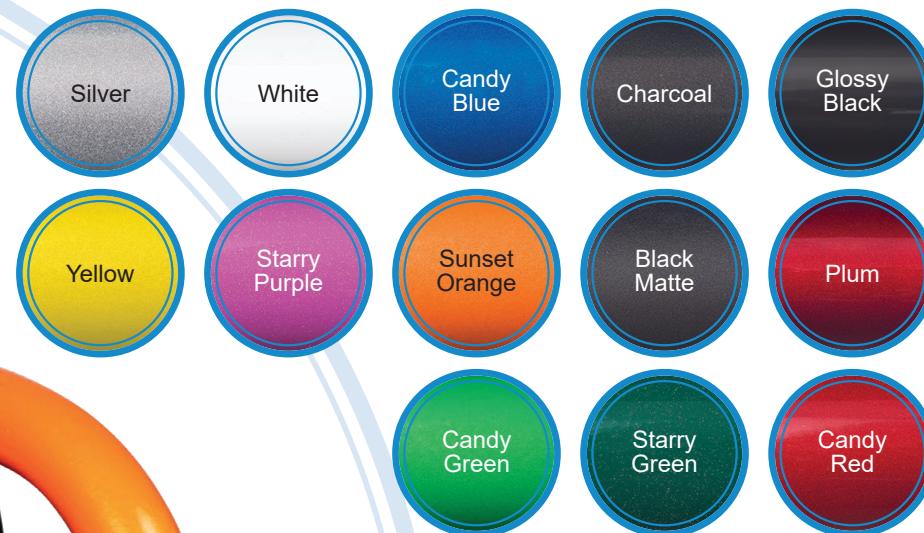
The centre position of the propulsion wheels, reduces the turning radius, provides more stability and facilitates manual propulsion while in a tilted position, increasing the patient's autonomy.

REAR CASTER TILT MECHANISM

With a foot activated mechanism, the Spiral™ easily overcomes obstacles and facilitates access to paratransit services.



## COLOURS



### CERTIFIED TRANSIT SAFETY

The Spiral™ has gone through a dynamic crash test to ensure the safety and security of your child when seated in their wheelchair aboard a motor vehicle. The crash testing was conducted in accordance with RESNA WC 19 and ISO 7176-19 industry standards. Includes four tie-down points integrated to the frame.

### ADAPTIVE DESIGN

The Spiral™ frame was developed with the highest degree of precision. With the use telescopic tubing, it is easy to quickly and accurately reconfigure the wheelchair. Offered with a Standard or Large frame, each frame base can be gradually enlarged, ensuring that the wheelchair continuously adapts to the child's changing body size during their growth.

### TWO AVAILABLE FOOTRESTS AND FOOTPLATES MODELS

**Removable and retractable footrests**  
Angle and depth adjustable footplates.  
**Fixed footrests**  
Adduction clearance.  
Angle and depth adjustable one piece footplate.

### INNOVATIVE TILT

The central pivot allows a 45° tilt around the propulsion wheels. This concept (patent pending) makes it possible to keep the relative position of the armrests consistent with the wheels. The result: an excellent propulsion position regardless of the tilt angle!

### BRAKES ALWAYS WITHIN REACH

The design of the Spiral™ allows the brakes to follow the tilting angle of the chair. This feature improves the child's safety by ensuring constant access to the brakes, no matter how inclined they are.







# **FOLDING MANUAL WHEELCHAIR XL5<sup>TM</sup> & XL5CI<sup>TM</sup>**





Reliable, easy-to-use and fully configurable to meet the user's needs perfectly.

TECHNICAL SPECIFICATIONS

Wheelchair Type	Folding Manual Wheelchair
Composition	Aluminium
Back Height	12" to 25"
Seat Depth	12" to 24"
Seat Width	12" to 24"
Seat-to-Floor Height	Front Height: 13" to 21" Back Height: 13" to 20"
Overall Length	Seat depth + 24"
Overall Width	Seat width + 8"
Caster Diameter	4", 5", 6", 7", 8"
Propulsion Wheel Diameter	20", 22", 24"
Transport Weight*	32 lb (14,5 kg)
Device Weight	40 lb (18,1 kg)
Maximum Weight Capacity	Standard: 250 lb (113,4 kg) Double Folding Mechanism**: 350 lb (158,8 kg)
Backrest Angle	85° to 115°
Armrests	"U" Type: 7" to 12" "U" Type lowered: 6" to 9" "U" Type elevated: 11 ¾" to 14 ½" "L" Type: 8" to 10" "T" Type: 8" to 14"
Footrests	60°, 70°, 90°
Elevating Legrests	14" to 19"

\* Weight based on 16" x 16" wheelchair with all standard features.  
\*\* Only the 250 lb (113.4 kg) version has been ISO tested.

SEAT-TO-FLOOR HEIGHT BY SELECTED WHEELCHAIR CONFIGURATIONS AND WHEEL AND CASTER DIAMETERS.

FRONT SEAT-TO-FLOOR HEIGHT			
Caster	Hemi Frame Short Fork	Standard Frame Short Fork	Standard Frame Long Fork
4"	13" to 13 ½"	15" to 16 ½"	17 ½" to 19"
5"	13" to 14"	15 ½" to 17"	18" to 19 ½"
6"	13 ½" to 14 ½"	16 ½" to 17 ½"	18 ½" to 20"
7"	14 ½" to 15"	17 ½" to 18"	19" to 20 ½"
8"	15 ½"	18 ½"	19 ½" to 21"
REAR SEAT-TO-FLOOR HEIGHT			
Wheel	Rear Seat-to-Floor		
20"	13" to 17 ½"		
22"	14" to 18 ½"		
24"	15" to 19 ½"		

OTHERS OPTIONS

Backrest	Dynamic Backrest Tension Bar Angle Adjustable Stroller Bar
Frame	Reinforced Frame Rigid Seat
Armrests	3" Armrest Extension
Wheels	Natural Fit Transparent Spoke-Guard
Footplate	One Piece Footplate
Accessories	Oxygen Tank Holder Cane Holder

ANGLE AND HEIGHT ADJUSTABLE BACKREST

- Lightweight and remarkably easy to adjust.
- The backrest allows angle adjustments from 85° to 115° (by 5° increments).



ADJUSTABLE SEATING

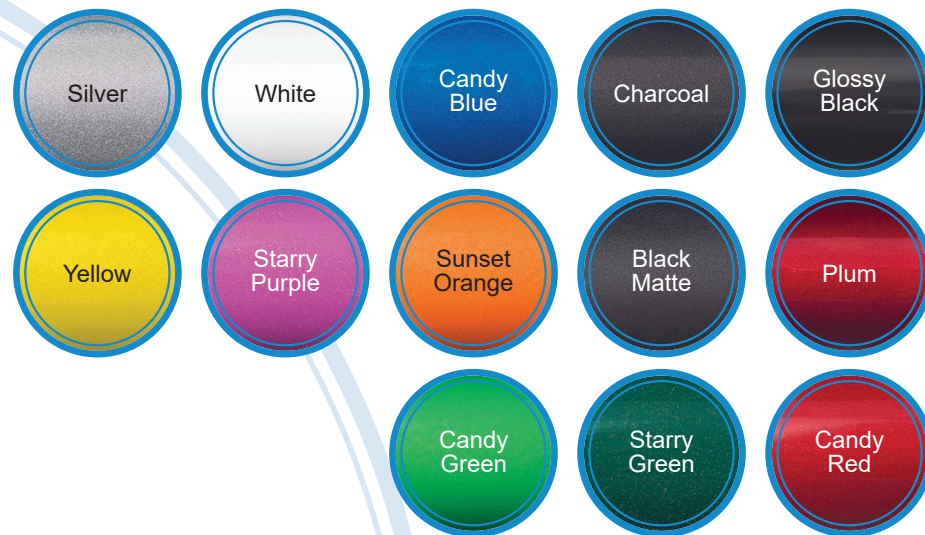
- Seat height adjustment by ½" increments.
- Seat depth adjustment by 1" increments.







## COLOURS

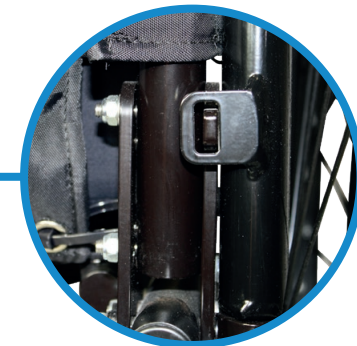


### ALL-IN-ONE FOOTRESTS

- Retractable and removable footrests.
- Height adjustable by 1/2" increments.
- Angle and depth adjustable footplates.

### ROBUST, FLIP-BACK AND REMOVABLE ARMRESTS

- Facilitate push-up style lifts.
- Provides increased stability and durability. Capable of withstanding the various forces exerted upon them.
- Height adjustable by 1/2" increments
- Integrated clothing guards.



### TIE-DOWN SYSTEM

- Includes four frame-mounted tie-downs.

### ANTI-TIPPERS

- Swiveling and height adjustable anti-tippers







The XL5CI™ is a mobility aid specifically designed to provide easier foot-propulsion and facilitate transfers by providing multiple simple adjustments.

TECHNICAL SPECIFICATIONS

Wheelchair Type	Folding Manual Wheelchair
Composition	Aluminium
Back Height	13" to 26"
Seat Depth	12" to 24"
Seat Width	12" to 24"
Seat-to-Floor Height	Front Height: 11 ½" to 19 ½" Back Height: 11 ½" to 19"
Overall Length	Seat depth + 24"
Overall Width	Seat width + 8"
Caster Diameter	4", 5", 6", 7", 8"
Propulsion Wheel Diameter	20", 22", 24"
Transport Weight*	28 lb (12,7 kg)
Device Weight	35 lb (15,9 kg)
Maximum Weight Capacity	Standard: 250 lb (113,4 kg) Double Folding Mechanism**: 350 lb (158,8 kg)
Backrest Angle	85° to 115°
Armrests	"U" Type: 8" to 13" "U" Type lowered: 7" to 10" "U" Type elevated: 13 ¼" to 16" "L" Type: 9" to 11" "T" Type: 9 ½" to 15 ½"
Footrests	60°, 70°, 90°
Elevating Legrests	14" to 19"

\* Weight based on 16" x 16" wheelchair with all standard features.  
\*\* Only the 250 lb (113.4 kg) version has been ISO tested.

SEAT-TO-FLOOR HEIGHT BY SELECTED WHEELCHAIR CONFIGURATIONS AND WHEEL AND CASTER DIAMETERS.

FRONT SEAT-TO-FLOOR HEIGHT

Caster	Hemi Frame Short Fork	Standard Frame Short Fork	Standard Frame Long Fork
4"	11 ½" to 12"	13 ½" to 15"	16" to 17 ½"
5"	11 ½" to 12 ½"	14" to 15 ½"	16 ½" to 18"
6"	12" to 13"	15" to 16"	17" to 18 ½"
7"	13" to 13 ½"	16" to 16 ½"	17 ½" to 19"
8"	14"	17"	18" to 19 ½"

REAR SEAT-TO-FLOOR HEIGHT

Wheel	Rear Seat-to-Floor
20"	11 ½" to 16"
22"	12 ½" to 17"
24"	13 ½" to 18"

OTHERS OPTIONS

Backrest	Dynamic Backrest Tension Bar Angle Adjustable Stroller Bar
Frame	Reinforced Frame Rigid Seat
Armrests	3" Armrest Extension
Wheels	Natural Fit Transparent Spoke-Guard
Footplate	One Piece Footplate
Accessories	Oxygen Tank Holder Cane Holder

LOWEST SEAT-TO-FLOOR HEIGHT OF THE INDUSTRY

With a low seat-to-floor height of 11½", The XL5CI™ offers the lowest center of gravity and seat height of the industry, facilitating foot-propulsion.



PROPULSION WHEELS

- Center of gravity adjustment by ¼" increments.
- Depth and height adjustments of propulsion wheels.

ADJUSTABLE BRAKES

- The brake mounting bracket has two depth adjustment slots that ensure accurate brake positioning.



# **WHEELCHAIR PARAMETERS**



**STATIC STABILITY PARAMETERS**  
*(ISO 7176-1) 115 kg dummy -*  
**4 Wheel Neox®**

Section	Description	Measure
9.2	Front stability angle, unlocked wheels	18,3°
10.2	Rear stability angle, unlocked wheels	13° *
10.3	Rear stability angle, locked wheels*	10,4° *
11.2	Rear stability angle, with anti-tilt device	11° *
12.1	Left side stability angle	22,6°
12.1	Right side stability angle	22,8°

\*For a backrest angle of 115°, the tilt must be limited to 40.3°. For a backrest angle of 125°, the tilt must be limited to 36°. The limitations of settings described in the user manual must be respected.

**BRAKE EFFICIENCY PARAMETERS**  
*(ISO 7176-3) 115 kg dummy -*  
**4 Wheel Neox®**

Section	Description	Measure
6	Brake force	62N
7.2	Downhill: Maximum Angle	10,7° (Slide)
7.2	Uphill: Maximum Angle	16,1° (Roll)

**NEOX™**



**STATIC STABILITY PARAMETERS**  
*(ISO 7176-1)*

Section	Description	68 kg (150 lb)	25 kg (55 lb)
8.2	Forward stability angle, unlocked wheels	17,2°	20,9°
9.2	Rearward stability angle, unlocked wheels	12,9°	22,3°
9.3	Rear stability angle, locked wheels	10,8°	19,5°
10.2	Lateral stability angle	16,2°	19,2°

**BRAKE EFFICIENCY PARAMETERS**  
*(ISO 7176-3)*

Section	Description	68 kg (150 lb)	25 kg (55 lb)
6	Brake force	60 N	60 N
7.2	Downhill: Maximum Angle	10,5°	12,4°
7.2	Uphill: Maximum Angle	15,0°	17°

**SPIRAL™**





**STATIC STABILITY PARAMETERS**  
*(ISO 7176-1) 115 kg dummy*

Section	Description	Measure
9.2	Front stability angle, unlocked wheels	21,6°
10.2	Rear stability angle, unlocked wheels	13,2°
10.3	Rear stability angle, locked wheels	10°*
11.2	Rear stability angle, with anti-tilt device	12,1°*
12.1	Left side stability angle	21,6°
12.1	Right side stability angle	21,9°

\* Must comply with the configuration limits specified in the user manual.

**BRAKE EFFICIENCY PARAMETERS**  
*(ISO 7176-3) 115 kg dummy*

Section	Description	Measure
6	Brake force	59N
7.2	Downhill: Maximum Angle	13,3° (Slide)
7.2	Uphill: Maximum Angle	21,7° (Roll)

**STATIC STABILITY PARAMETERS**  
*(ISO 7176-1) 115 kg dummy*

Section	Description	Measure
9.2	Front stability angle, unlocked wheels	22,1°
10.2	Rear stability angle, unlocked wheels	18°
10.3	Rear stability angle, locked wheels	10,5°*
11.2	Rear stability angle, with anti-tilt device	16°*
12.1	Left side stability angle	23,5°
12.1	Right side stability angle	23,8°

\* Must comply with the configuration limits specified in the user manual. The angle of the backrest is set at 110°, which exceeds the requirements of the RAMQ.

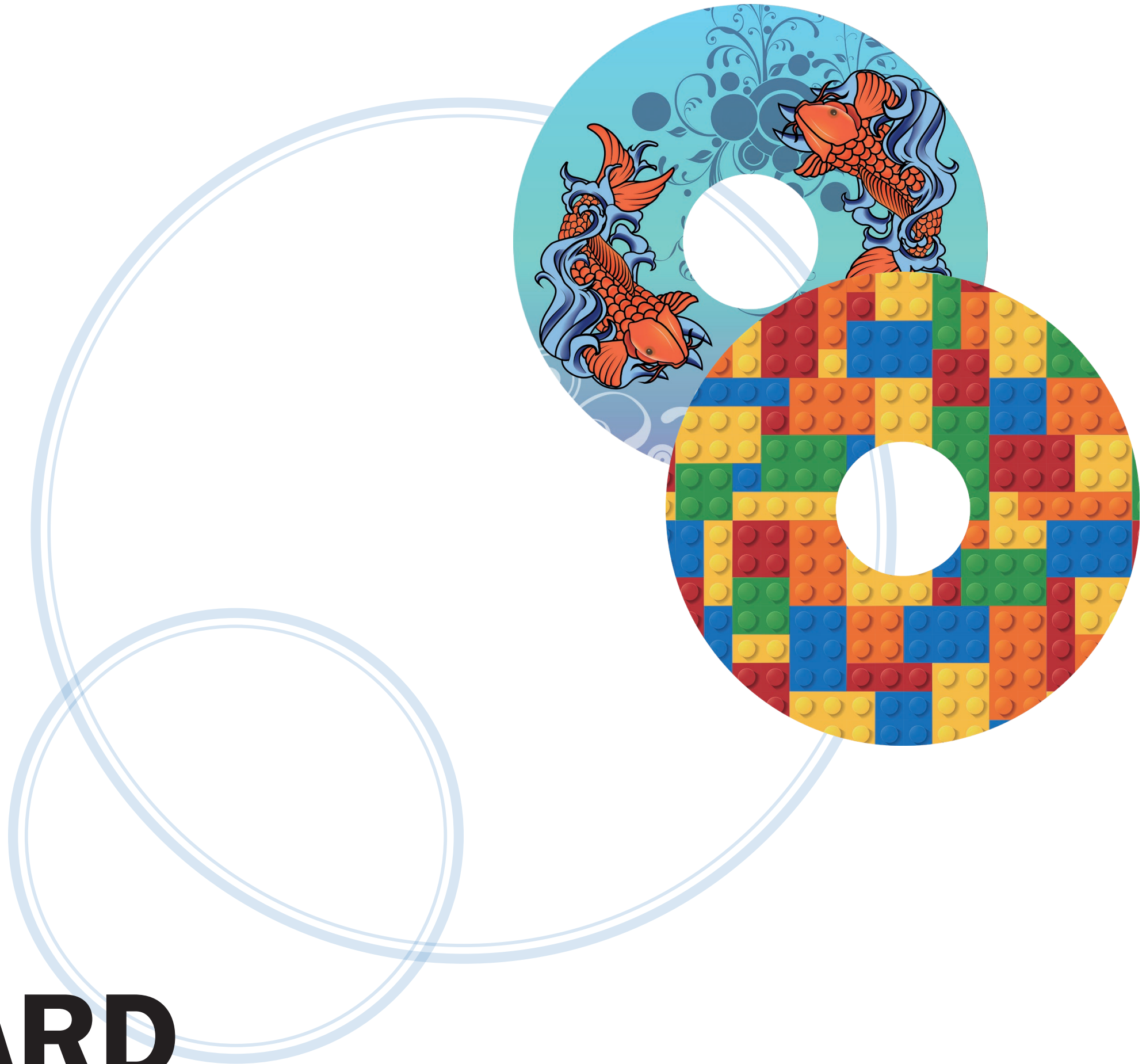
**BRAKE EFFICIENCY PARAMETERS**  
*(ISO 7176-3) 115 kg dummy*

Section	Description	Measure
6	Brake force	59N
7.2	Downhill: Maximum Angle	12,8° (Slide)
7.2	Uphill: Maximum Angle	18,7° (Roll)





**SPOKE-GUARD**





# SPOKE-GUARD

## PHYSIPRO INTRODUCES A NEW LINE OF COLOURFUL SPOKE-GUARDS!

Spoke-guards are utilized to keep the finger out of danger while adding a personal touch to your wheelchair. We offer spoke-guard designs to customize your chair the way you want!  
\*You can also order transparent spoke-guards if desired.

## CUSTOMIZE SPOKE-GUARDS :

It is possible to create and customize spoke-guards by using the picture of your choice. For a customize spoke-guard design, additional charges will apply.

You can also create a spoke-guard with your own logo (hospital, Rehabilitation Center, Sports Team, etc.). Additional costs apply.

To order spoke-guards, please refer to the order form or go to [www.physipro.com/en-ca/](http://www.physipro.com/en-ca/)

## PHYSIPRO SPOKE-GUARDS :

- Made from durable polycarbonate
- Sold in pairs
- Attached with Velcro Strap



### CHILDREN



PR012



PR001



PR007



PR248



PR251

### ABSTRACT



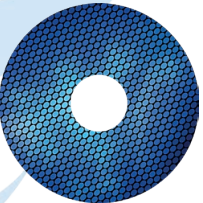
PR048



PR050



PR055

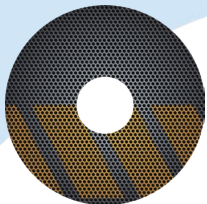


PR057



PR059

### TEENS & ADULTS



PR016



PR029



PR034

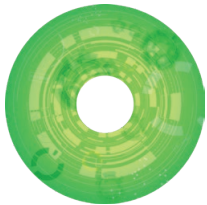


PR253

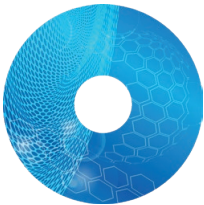


PR257

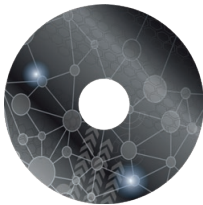
### TECHNO & SPORTS



PR121



PR122



PR132



PR169



PR176

### KALEIDOSCOPE



PR045



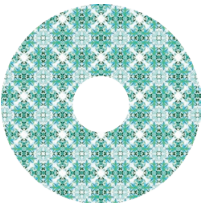
PR214



PR221



PR224



PR233

Go to [www.physipro.com](http://www.physipro.com) to see our various models







# PHYSIPRO®

Seating and mobility solutions

30 years

## Canada

370, 10th Avenue South  
Sherbrooke (Quebec) J1G 2R7  
Canada

1 800 668-2252  
[info@physipro.com](mailto:info@physipro.com)  
[www.physipro.com](http://www.physipro.com)

## Europe

Village des entrepreneurs  
461, rue Saint-Léonard  
49000 Angers  
France

02 41 69 38 01  
[contact@physipro.fr](mailto:contact@physipro.fr)