

CATALOG

SEATING AND POSITIONING SOLUTIONS



TABLE OF CONTENT

CUSHIONS.....	3
Standard Collection	4
Custom Designs	28
Installation Options	32
Customized Shapes	34
Postural Components	37
Covers	41
Bed Positioning	43
 BACKRESTS	 51
Sling Backrests	52
Rigid Backrests	60
Lateral Supports	64
Postural Components	70
Covers	72
Accessories	74
3D Molded Seating	76
 LOWER & UPPER BODY POSITIONING ..	 79
Headrests	80
Upper Body Positioning	82
Lower Body Positioning	84

CUSHIONS

POSITIONING



PHYSIPRO®

Seating and mobility solutions



The Brio™ cushion facilitates corporal alignment and can accommodate different postural conditions. Designed to provide comfort to individuals who require moderate postural support. Light weight and with a slimline profile, The Brio™ encourages natural body alignment.

SPECIFICATIONS

Starting Retail Price	\$315
Product Code	S2950-...
Product Type	Foam Cushion
Width	14" to 21"
Depth	14" to 21"
Thickness	2 ½"
Weight	2,5 lb (16" x 18" - 2 ½")
Weight Capacity	14" to 18" width: 200 lb 19" to 21" width: 300 lb
Warranty	Cushion: 24 months limited warranty Cover: 6 months limited warranty

COMPOSITION

Foam Base	2" Urethane VF60
Foam Insert	1" Soft Memory Foam
Top Layer	½" Urethane VF40

OPTIONS

Installation Choice	Flat or Sling (ABS rigidizer available) or Built-In of 1", 1 ½" or 2"
---------------------	--

COVERS

Outer Covers	Stretch, Anti-slip or Waterproof
Inner Covers	Zippered inner cover or Transparent cover with velcro



**PREVENTS
SLIDING**



**LESION
PREVENTION**



**REDUCES
PRESSURE**
on bony prominence
(ischium and coccyx)

AERATION 7 / 10

**IMPROVED POSTURE
AND STABILITY** 7 / 10

COMFORT 8 / 10

**BALANCED DISTRIBUTION
OF WEIGHT** 7 / 10

STABILITY AND ALIGNMENT

The Brio's™ anatomical shapes promote lower limb and pelvic alignment, which contributes to the prevention of sliding.



Comfort
Foam

Memory
Foam

The pelvic contact area of the Brio™ features an additional layer of memory foam to help reduce pressure on the ischial tuberosities by redistributing pressure towards the muscles of the anterior thigh.

PROTECTION OF SENSITIVE SKIN



The C3S™ is composed of multiple layers of comfort and dispersion foams for immediate and long-term wellbeing. The order and composition of these superimposed layers of foams are the primary factor for the comfort provided by the C3S™.

SPECIFICATIONS

Starting Retail Price	\$397
Product Code	S2985-...
Product Type	Foam Cushion
Width	14" to 26"
Depth	14" to 22"
Thickness	3 ½"
Weight	4,0 lb (16" x 18" - 3")
Weight Capacity	14" to 20" width: 300 lb 21" to 26" width: 500 lb
Warranty	Cushion: 24 months limited warranty Cover: 6 months limited warranty

COMPOSITION

Bottom Layer	½" EVA foam
Middle Layers	1" Soft Memory Foam and 1" Latex
Top Layer	1" Viscoelastic Foam

OPTIONS

Installation Choice	Flat or Sling (ABS rigidizer available) or Built-In of 1", 1 ½" or 2"
Customized Shape	Anatomic, Hemiplegic, Contoured Depth, Front Wedge, Rounded Front, Low Profile and Recessed Sacral.
Postural Components	Anti-Thrust Wedge, Anti-Sling Wedge, Pelvic Obliquity Wedge, Medial Thigh Abductor, Lateral Thigh Support and Lateral Pelvic Support.

COVERS

Outer Covers	Stretch, Anti-slip or Waterproof
Inner Covers	Zippered inner cover or Transparent cover with velcro



**LESION
PREVENTION**



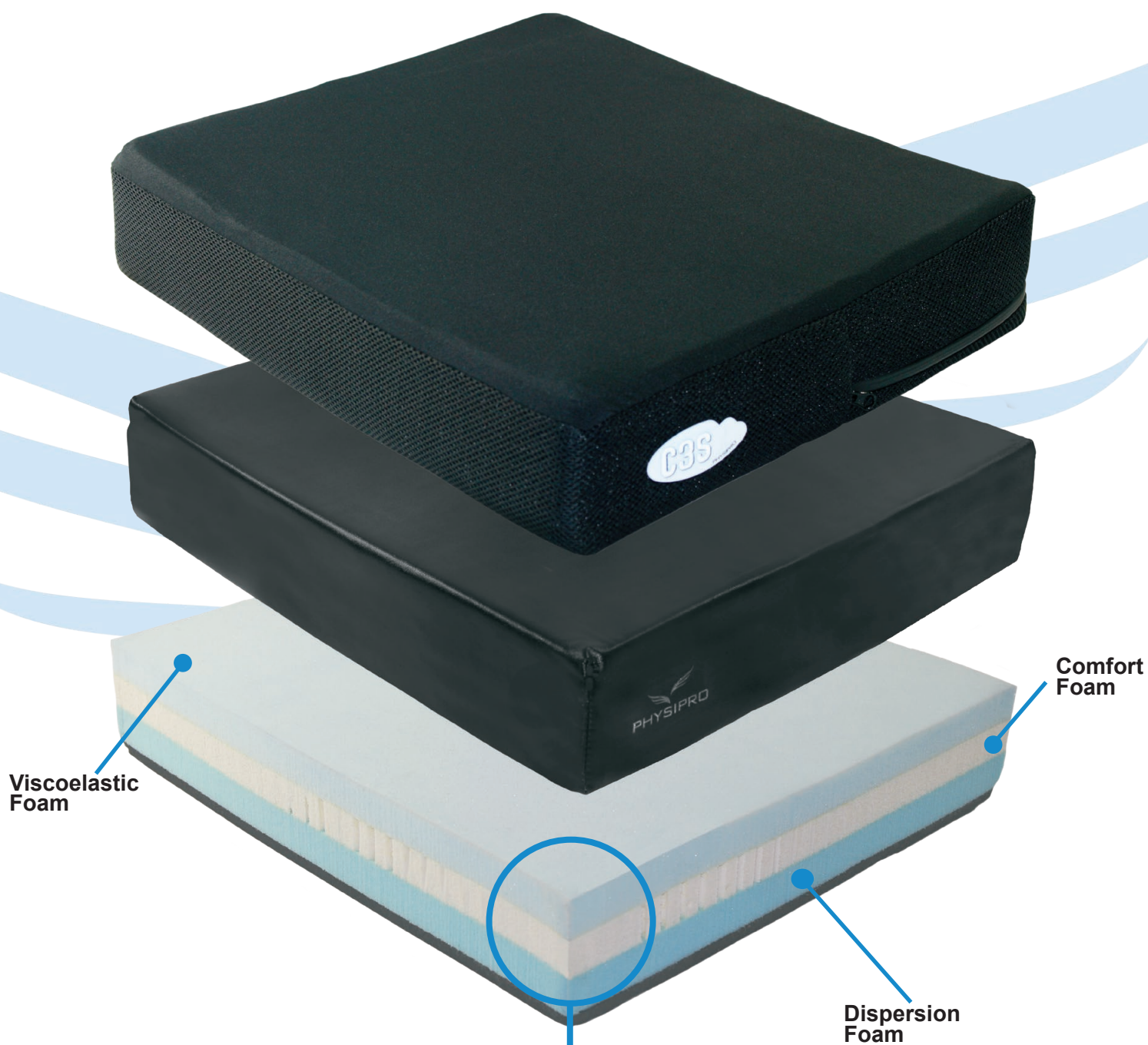
**REDUCES
PRESSURE**
on bony prominence
(ischium and coccyx)

AERATION 7 / 10

**IMPROVED POSTURE
AND STABILITY** 7 / 10

COMFORT 9 / 10

**BALANCED DISTRIBUTION
OF WEIGHT** 7 / 10



The CS3™ provides an enhanced level of protection to areas at risk of developing pressure sores. Consisting of three layers, a high-quality latex foam is sandwiched between a lower layer of low resilience dispersion foam and a top layer of viscoelastic, this combination ensures that the CS3™ comfortably conforms to the shape of the body.

OPTIMAL COMFORT



The Contour Insert™ is composed of a injected urethane base which features a cut-out in the pelvic loading area, that allows you to customize the cushion in order to obtain the best level of skin protection. Particularly useful in cases of progressive diseases, the Contour Insert™ can be fitted with a variety of inserts.

SPECIFICATIONS

Starting Retail Price	\$1020 (with Roho® Insert)
Product Code	S2361-... (2" thick) S2366-... (3" thick) S2371-... (4" thick)
Funding Information	Standard: SE0001610 Bariatric Size: SE0001611
Product Type	Foam Cushion
Width	14" to 24"
Depth	14" to 24"
Thickness	2", 3" or 4"
Weight	2,5 lb (16" x 18" - 3" - with Soft Memory Foam insert) 4,0 lb (16" x 18" - 3" - with Cube Gel insert)
Weight Capacity	14" to 20" width: 300 lb 21" to 26" width: 500 lb
Warranty	Cushion: 24 months limited warranty Cover: 6 months limited warranty

COMPOSITION

Bottom Layer	¼" Plastazote
Foam Base	Injected Urethane (LXA) - medium-firm

OPTIONS

Insert at the pelvic loading area	Roho® air cell insert, Aqua Blue Cubed Gel, Aqua Blue Pebble Gel or Memory Foam and Urethane
Installation Choice	Flat or Sling (ABS rigidizer available) or Built-In of 1", 1 ½" or 2"
Customized Shape	Anatomic, Hemiplegic, Contoured Depth, Front Wedge and Low Profile.
Postural Components	Anti-Thrust Wedge, Anti-Sling Wedge, Pelvic Obliquity Wedge, Medial Thigh Abductor, Lateral Thigh Support and Lateral Pelvic Support.

COVERS

Outer Covers	Stretch, Anti-slip or Waterproof
Inner Covers	Zippered inner cover or Transparent cover with velcro



**REDUCES FRICTION
AND SHEARING**



**LESION
PREVENTION**



**REDUCES
PRESSURE**
on bony prominence
(ischium and coccyx)

AERATION 8 / 10

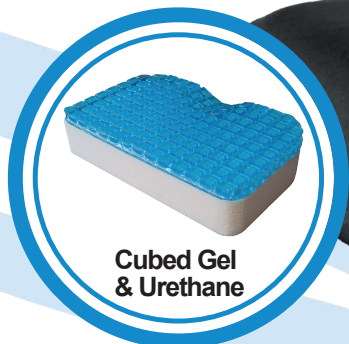
**IMPROVED POSTURE
AND STABILITY** 7 / 10

COMFORT 9 / 10

**BALANCED DISTRIBUTION
OF WEIGHT** 9 / 10

A WIDE SELECTION OF INSERTS

The idea behind the Contour Insert™ was to accommodate persons with a postural degenerative condition. A wide selection of inserts ensures that the need for additional comfort can be provided to better accommodate the user's changing requirements.



High Performance
Injected Urethane



The pre-contoured Easy Fit cushion offers the postural benefits of a molded seat cushion. With its anatomical shapes, the Easy Fit cushion significantly improves pressure distribution, increases pelvic stability and naturally aligns the lower limbs. The Easy Fit cushion was created to provide a superior level of comfort and postural control.

SPECIFICATIONS

Starting Retail Price	\$850
Product Code	S5400-...
Product Type	Foam Cushion
Width	14" to 20"
Depth	14" to 20"
Thickness	3"
Weight	2,5 lb (16" x 18" - 3")
Weight Capacity	14" to 20" width: 300 lb
Warranty	Cushion: 24 months limited warranty Cover: 6 months limited warranty



REDUCES PRESSURE
on bony prominence
(ischium and coccyx)



GREATER SUPPORT
for individuals suffering
from muscle weakness



IMPROVED POSTURE AND STABILITY

COMPOSITION

Foam Base	2 ½" Injected Urethane (LXA) - medium-firm
Top Layer	½" Soft Memory Foam

OPTIONS

Top Layer	½" Viscoelastic Foam
Insert at the pelvic loading area	½" Aqua Blue Gel (Available with memory foam only)
Installation Choice	Flat or Sling (ABS rigidizer available)

COVERS

Outer Covers	Stretch, Anti-slip or Waterproof
Inner Covers	Zippered inner cover or Transparent cover with velcro

AERATION 7 / 10

IMPROVED POSTURE AND STABILITY 9 / 10

COMFORT 8 / 10

BALANCED DISTRIBUTION OF WEIGHT 9 / 10

ERGONOMIC DESIGN

Pre-formed leg troughs

Femoral alignment is important to maintain a correct sitting position. The Easy Fit's was designed with a medial abductor and tapered lateral adductors to keep the knees aligned with the hips and prevent excessive pelvic rotation and windswept posture.

The anatomical shapes of the Easy Fit cushion ensures optimal body alignment, increases stability and contributes to overall better postural health.

Pelvic well

The pelvic well limits forward migration and reduces lateral movement of the pelvis.

Soft
Memory
Foam

OPTION:
Gel Insert

Injected Urethane
Medium-Firm Density

OPTIMAL SUPPORT

The selection of high quality materials and the design of the Easy Fit cushion were determined to optimize postural support, provide deeper immersion where needed and reduce pressure on bony prominences by redistributing the load over the entire seating surface.



The Ellipse™ is a high-quality cushion conceived to provide increased postural stability and to evenly distribute pressure over the entire seating surface.

SPECIFICATIONS

Starting Retail Price	\$430
Product Code	S2991-...
Product Type	Foam and Gel Cushion
Width	14" to 26"
Depth	14" to 22"
Thickness	3"
Weight	7,24 lb (16" x 18" - 3")
Weight Capacity	14" to 20" width: 300 lb 21" to 26" width: 500 lb
Warranty	Cushion: 24 months limited warranty Cover: 6 months limited warranty

COMPOSITION

Foam Base	2" Injected Urethane (LXA) - soft
Middle Layers	½" Soft Memory Foam 1" Temper Foam T38 (for widths of 21" and over)
Top Layer	½" Aqua Blue Pebble Gel

OPTIONS

Installation Choice	Flat or Sling (ABS rigidizer available) or Built-In of 1", 1 1/2" or 2"
---------------------	--

COVERS

Outer Covers	Stretch, Anti-slip or Waterproof
Inner Covers	Zippered inner cover or Transparent cover with velcro



**DIMINUTION
OF FRICTION
AND SHEARING**



**LESION
PREVENTION**



**SHOCK
AND VIBRATION
ABSORPTION**



**PREVENTS
SLIDING**

AERATION 7 / 10

**IMPROVED POSTURE
AND STABILITY** 7 / 10

COMFORT 8 / 10

**BALANCED DISTRIBUTION
OF WEIGHT** 7 / 10

ANATOMICAL SHAPE

The anatomical shape of the Ellipse™ is covered with a layer of dispersion foam to provide stability and comfort. A top layer of polymer can be added to provide a deeper immersion of bony prominence and greater skin protection.



Designed to efficiently distribute pressure over the entire cushion surface, The Ellipse™ provides a deeper immersion to better envelop the ischial tuberosities. The Ellipse™ is the ideal cushion for bariatric users.

OPTIMAL IMMERSION



The LXA™ was created to provide skin protection for persons with epidermal thinning, due to muscle weakness in the gluteus maximus. The cubed design of the gel cells reduces the effects of shearing and improves airflow.

SPECIFICATIONS

Starting Retail Price	\$680
Product Code	S2455-...
Product Type	Foam and Gel Cushion
Width	14" to 26"
Depth	14" to 22"
Thickness	2", 2 ½", 3", 3 ½", 4" or 4 ½"
Weight	6,5 lb (16" x 18" - 3")
Weight Capacity	14" to 20" width: 300 lb 21" to 26" width: 500 lb
Warranty	Cushion: 24 months limited warranty Cover: 6 months limited warranty

COMPOSITION

Foam Base	Injected Urethane (LXA) - soft
Gel Plate	½" Aqua Blue Cubed Gel

OPTIONS

Installation Choice	Flat or Sling (ABS rigidizer available) or Built-In of 1", 1 ½" or 2"
Customized Shape	Anatomic, Hemiplegic, Contoured Depth, Front Wedge, Low Profile and Rounded Front.
Postural Components	Anti-Thrust Wedge, Anti-Sling Wedge, Pelvic Obliquity Wedge and Removable Lateral Pelvic Support.

COVERS

Outer Covers	Stretch, Anti-slip or Waterproof
Inner Covers	Zippered inner cover or Transparent cover with velcro



REDUCES FRICTION AND SHEARING



LESION PREVENTION



SHOCK AND VIBRATION ABSORPTION



BETTER MOISTURE CONTROL



EASY MAINTENANCE

AERATION 7 / 10

IMPROVED POSTURE AND STABILITY 8 / 10

COMFORT 8 / 10

BALANCED DISTRIBUTION OF WEIGHT 8 / 10

OPTIMIZED AIR-FLOW

The LXA™'s cubed polymer top layer improves air circulation in order to reduce heat and moisture build-up. The LXA™ surface also will provide greater skin protection, if sliding occurs.



ANTI-SLIP SURFACE

The LXA™ is the ideal positioning cushion to reduce pain and discomfort caused by sliding.

Cubed Polymer

Injected Urethane Foam

The high-performance injected urethane foam base of the LXA™ provides a better immersion and helps stabilize the pelvis, improving overall postural balance.

PRESSURE DISTRIBUTION



The PhysiAir™ cushion offers numerous postural benefits, made with a high resilience polyurethane foam and a Stimulite® honeycomb sheet.

SPECIFICATIONS

Starting Retail Price	\$745
Product Code	S5000-...
Funding Information	Standard: SE0001612 Bariatric Size: SE0001613
Product Type	Foam and Honeycomb sheet Cushion
Width	10" to 24"
Depth	10" to 22"
Thickness	2 ½", 3", 3 ½" or 4"
Weight	2,5 lb (16" x 18" - 3")
Weight Capacity	14" to 20" width: 300 lb 21" to 26" width: 500 lb
Warranty	Cushion: 24 months limited warranty Cover: 6 months limited warranty



**INCREASES SKIN
BLOOD FLOW**



**BETTER MOISTURE
CONTROL AND
REDUCES
TRANSPIRATION**



**SHOCK AND
VIBRATION
ABSORPTION**



EASY MAINTENANCE

COMPOSITION

Foam Base	Injected Urethane (LXA) - soft or firm
Honeycomb Sheet	½" Stimulite®

OPTIONS

Installation Choice	Flat or Sling (ABS rigidizer available) or Built-In of 1", 1 ½" or 2"
---------------------	--

COVERS

Outer Covers	Stretch, Anti-slip or Waterproof
Inner Covers	Zippered inner cover or Transparent cover with velcro

AERATION 10 / 10

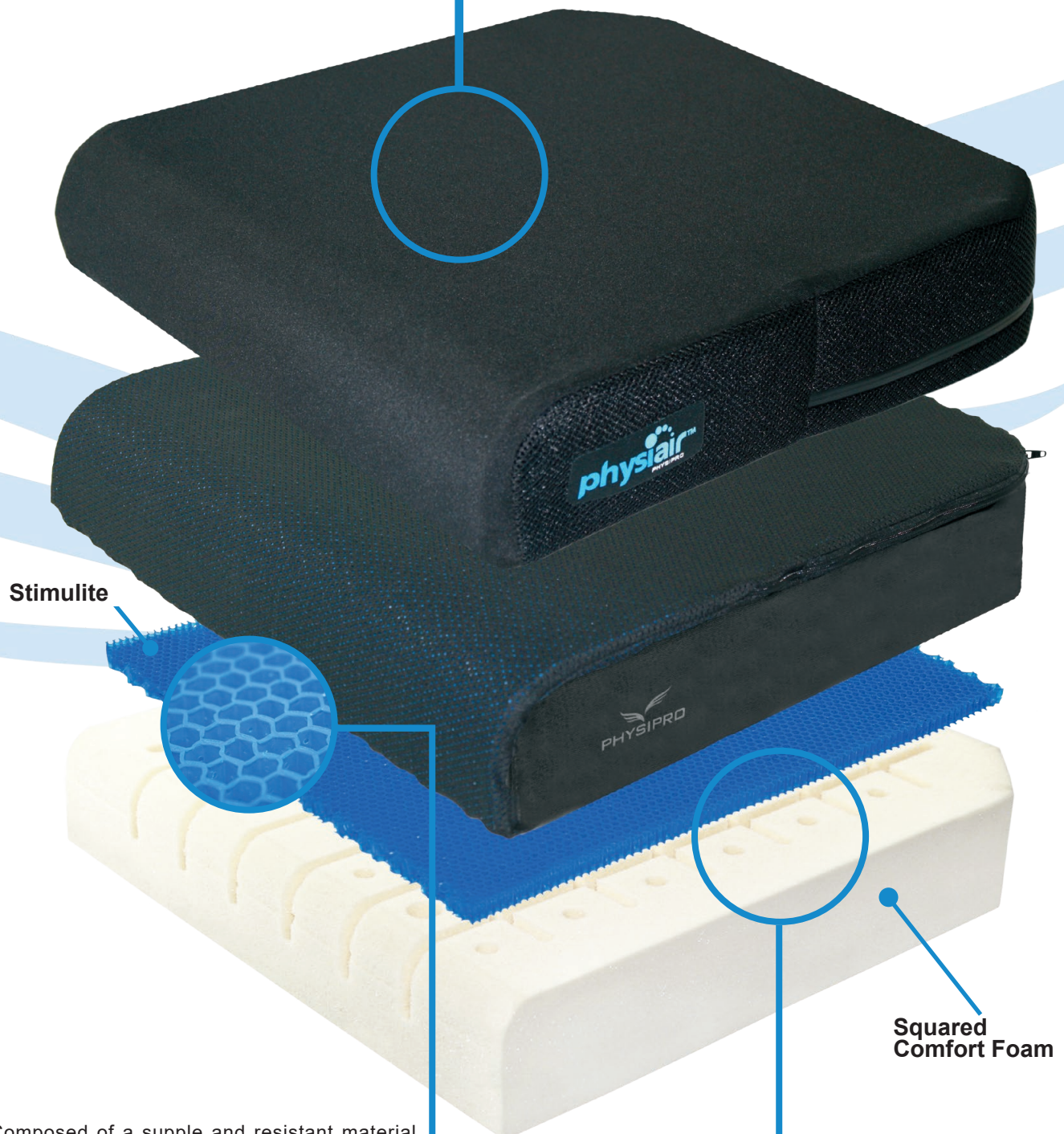
**IMPROVED POSTURE
AND STABILITY** 8 / 10

COMFORT 9 / 10

**BALANCED DISTRIBUTION
OF WEIGHT** 9 / 10

OPTIMIZED AIR-FLOW

The air cells of the Stimulite® honeycomb sheet allows air to flow inside the cushion in every direction simultaneously.



Composed of a supple and resistant material, the Stimulite® sheet adapts to the anatomy of the user and stabilizes the pelvic girdle to promote a better postural balance.

SKIN PROTECTION

The firm polyurethane injected foam base is grooved and perforated to maximize immersion of the pelvic contact area. The Physiair™ offers functional stability and ensure a controlled distribution of pressure around areas at risk of developing pressure sores.

PRESSURE DISTRIBUTION



The Zero-Pressure™ cushion significantly reduces pressure on bony prominence. The cushion's contours and the posterior well we're designed to distribute weight away from the sacral region to effectively alleviate pressure on the sacrum and the coccyx.

SPECIFICATIONS

Starting Retail Price	\$550
Product Code	S1265-...
Product Type	Foam Cushion
Width	10" to 26"
Depth	10" to 22"
Thickness	2 ½"
Weight	3,2 lb (18" x 16" - 2 ½")
Weight Capacity	14" to 20" width: 300 lb 21" to 26" width: 500 lb
Warranty	Cushion: 24 months limited warranty Cover: 6 months limited warranty

COMPOSITION

Foam Base	2" Injected Urethane (LXA) - soft or firm
Top Layer	½" Soft Memory Foam

OPTIONS

Gel at the pelvic loading area	½" Flat Gel
Installation Choice	Flat or Sling (ABS rigidizer available) or Built-In of 1", 1 ½" or 2"
Customized Shape	Anatomic, Hemiplegic, Contoured Depth, Front Wedge and Low Profile.
Postural Components	Anti-Thrust Wedge, Anti-Sling Wedge, Pelvic Obliquity Wedge, Medial Thigh Abductor, Lateral Thigh Support and Lateral Pelvic Support.

COVERS

Outer Covers	Stretch, Anti-slip or Waterproof
Inner Covers	Zippered inner cover or Transparent cover with velcro



**GREATER
PRESSURE RELIEF**
for bony prominence
(ischium and coccyx)



**LESION
PREVENTION**



**PREVENTS
SLIDING**

AERATION 7 / 10

IMPROVED POSTURE
AND STABILITY 7 / 10

COMFORT 7 / 10

BALANCED DISTRIBUTION
OF WEIGHT 7 / 10

The pelvic contact area of the Zero-Pressure™ cushion offers optimal protection of bony prominences, by uniformly distributing pressure along the lower limbs.

SACRAL CUT

Dispersion Foam

High Performance Urethane

CORRECTIVE SEATING

The contoured surface of the Zero-Pressure™ efficiently prevents the pelvis from sliding forward, while also providing lateral support to promote a balanced posture.





The Resolve™ is designed to promote a stable seating posture and naturally align the lower limbs. The lateral adductors and the medial thigh abductor support the patient's lower body and the anti-thrust wedge prevents the user from slipping forward.

SPECIFICATIONS

Starting Retail Price	\$725
Product Code	Resolve™ with Lateral Pelvic Support: S2256-... Resolve™ without Lateral Pelvic Support: S2257-... Low Profile Resolve™ with Lateral Pelvic Support: S2258-... Low Profile Resolve™ without Lateral Pelvic Support: S2259-...
Product Type	Foam Cushion
Small Dimension	10" x 10", 10" x 12", 12" x 10", 12" x 12", 12" x 14", 14" x 12"
Medium Dimension	14" x 14", 14" x 16", 16" x 16", 16" x 18"
Large Dimension	18" x 16", 18" x 18", 20" x 16", 20" x 18", 20" x 20"
Weight (18" x 18" Cushion)	Resolve™ with Lateral Pelvic Support: 5,6 lb Resolve™ without Lateral Pelvic Support: 4,4 lb Low Profile Resolve™ with Lateral Pelvic Support: 4,5 lb Low Profile Resolve™ without Lateral Pelvic Support: 3,7 lb
Weight Capacity	10" x 10" to 14" x 12": 150 lb 14" x 14" to 20" x 20": 300 lb
Warranty	Cushion: Limited warranty of 24 months Cover: Limited warranty of 6 months



LOWER LIMB ALIGNMENT



GREATER SUPPORT
for individuals suffering from muscle weakness



SHOCK AND VIBRATION ABSORPTION



PREVENTS SLIDING

COMPOSITION

Bottom Layer	½" EVA foam
Middle Layers	Soft Memory Foam and Medium-Firm Memory Foam
Top Layer	Urethane VF40
Postural Components	Flat Anti-Thrust Wedge

OPTIONS

Installation Choice	Flat or Sling (With Pointed Anti-Sling Wedge)
---------------------	---

COVERS

Outer Covers	Stretch or Waterproof
Inner Cover	Transparent cover with velcro

AERATION 7 / 10

IMPROVED POSTURE AND STABILITY 10 / 10

COMFORT 9 / 10

BALANCED DISTRIBUTION OF WEIGHT 8 / 10

The lateral pelvic and adductor supports of the Resolve™ are reinforced with a rigid structure for effective postural control of the pelvis and the lower limbs.

POSTURAL CONTROL OF THE PELVIS



SUPERIOR COMFORT

Framed with a sturdy layer of plastazote to ensure stability, the Resolve™ cushion is made of soft memory foam and urethane that provide exceptional support and comfort.



The Resolve Air was created to combine both the postural benefits of the Resolve with the greater level of skin protection offered by an air cell cushion. The superimposed layers of dispersion and comfort foams, the integrated postural components as well as the addition of an air-cell insert at the pelvic contact area, provide unequalled support and comfort.

SPECIFICATIONS

Starting Retail Price	\$1040
Product Code	Resolve Air™ with Lateral Pelvic Support: S2320-... Resolve Air™ without Lateral Pelvic Support: S2325-... Low Profile Resolve Air™ with Lateral Pelvic Support: S2330-... Low Profile Resolve Air™ without Lateral Pelvic Support: S2335-...
Product Type	Foam Cushion
Medium Sizes	14" x 16", 16" x 16", 16" x 18"
Large Sizes	18" x 16", 18" x 18", 20" x 16", 20" x 18", 20" x 20"
Weight (With 18" x 18" cushion)	Resolve Air ^{MD} with Lateral Pelvic Support: 5,98 lb Resolve Air ^{MD} without Lateral Pelvic Support: 4,72 lb Low Profile Resolve Air ^{MD} with Lateral Pelvic Support: 5,79 lb Low Profile Resolve Air ^{MD} without Lateral Pelvic Support: 4,43 lb
Weight Capacity	14" x 16": 150 lb 16" x 16" to 20" x 20": 300 lb
Warranty	Cushion: Limited warranty of 24 months Cover: Limited warranty of 6 months

COMPOSITION

Bottom Layer	½" EVA foam
Middle Layers	Soft Memory Foam and Medium-Firm Memory Foam
Top Layer	Urethane VF40
Insert at the pelvic loading area	Roho® air cell insert
Postural Components	Flat Anti-Thrust Wedge

OPTIONS

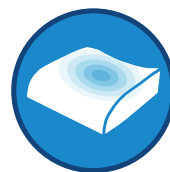
Installation Choice	Flat or Sling (With Pointed Anti-Sling Wedge)
---------------------	---

COVERS

Outer Covers	Stretch or Waterproof
Inner Cover	Transparent cover with velcro



BETTER FOR THE PREVENTION AND MANAGEMENT
of pressure sores



REDISTRIBUTES WEIGHT AND PRESSURE



MINIMIZES SHEAR AND FRICTION



GREATER SUPPORT
for persons with decreased muscle tone



ABSORBS SHOCKS AND VIBRATION



EFFECTIVELY PREVENTS SLIDING

AERATION 9 / 10

IMPROVED POSTURE AND STABILITY 10 / 10

COMFORT 9 / 10

BALANCED DISTRIBUTION OF WEIGHT 8 / 10

The pelvic and lateral supports are reinforced with a rigid structure to create a stable support base that minimizes the progression of abnormal posture by providing a boundary for the upper legs and pelvis. The medial thigh abductor fixed with velcro helps positioning the legs in order to maintain a proper alignment of the lower limbs. The combination of these postural components improves overall sitting posture and increases stability.

BETTER POSTURAL CONTROL OF THE PELVIS AND LOWER LIMBS



The Siliko™ is a hypoallergenic comfort cushion designed to protect users at risk of skin injury.

SPECIFICATIONS

Starting Retail Price	\$700
Product Code	S5100-...
Funding Information	Standard: SE0001614 Bariatric: SE0001615
Product Type	Foam and Gel Cushion
Width	10" to 26"
Depth	10" to 22"
Thickness	2", 2 ½", 3", 3 ½" or 4"
Weight	5,5 lb (17" x 17" - 3 ½")
Weight Capacity	14" to 20" width: 300 lb 21" to 26" width: 500 lb
Warranty	Cushion: 24 months limited warranty Cover: 6 months limited warranty

COMPOSITION

Foam Base	Injected Urethane (LXA) - soft
Gel Plate	½" Silicone with a ½" Soft Memory Foam underlayer

OPTIONS

Installation Choice	Flat or Sling (ABS rigidizer available) or Built-In of 1", 1 ½" or 2"
Customized Shape	Anatomic, Hemiplegic, Contoured Depth, Front Wedge and Low Profile.
Postural Components	Anti-Thrust Wedge, Anti-Sling Wedge, Pelvic Obliquity Wedge and Removable Lateral Pelvic Support.

COVERS

Outer Covers	Stretch, Anti-slip or Waterproof
Inner Covers	Zippered inner cover or Transparent cover with velcro



**PREVENTS FRICTION
AND SHEARING**



**LESION
PREVENTION**



**SHOCK AND
VIBRATION
ABSORPTION**



EASY MAINTENANCE

AERATION 7 / 10

**IMPROVED POSTURE
AND STABILITY** 7 / 10

COMFORT 9 / 10

**BALANCED DISTRIBUTION
OF WEIGHT** 8 / 10

OPTIMIZED VENTILATION

The embossed gel surface of the Siliko™ promotes greater air circulation and reduces the accumulation of heat and moisture.

Silicon
Plate

In addition to providing skin protection, Siliko™'s medical-grade materials make it a high-performance product with antibacterial and anti-odor properties.

MAXIMUM BACTERIA PROTECTION

Comfort Foam

The Siliko™ is the perfect cushion to protect bony prominences. The silicone surface redistributes pressure evenly among the different contact points on the cushion surface, effectively protecting the epidermis of the gluteus maximus against shearing and other harmful factors.

PRESSURE DISTRIBUTION



The Ultra™ cushion was designed with a larger contact surface to ensure a controlled and balanced weight distribution and reduce pressure on bony prominences.

SPECIFICATIONS

Starting Retail Price	\$570
Product Code	S1266-...
Product Type	Foam Cushion
Width	10" to 26"
Depth	10" to 22"
Thickness	3"
Weight	4,5 lb (18" x 16" - 3")
Weight Capacity	14" to 20" width: 300 lb 21" to 26" width: 500 lb
Warranty	Cushion: 24 months limited warranty Cover: 6 months limited warranty

COMPOSITION

Foam Base	2" Injected Urethane (LXA) - soft or firm
Foam Insert	Temper Foam T36
Top Layer	1" Viscoelastic Foam or 1" Latex

OPTIONS

Gel at the pelvic loading area	½" Flat Gel
Installation Choice	Flat or Sling (ABS rigidizer available) or Built-In of 1", 1 ½" or 2"
Customized Shape	Anatomic, Hemiplegic, Contoured Depth, Front Wedge and Low Profile.
Postural Components	Anti-Thrust Wedge, Anti-Sling Wedge, Pelvic Obliquity Wedge, Medial Thigh Abductor, Lateral Thigh Support and Lateral Pelvic Support.

COVERS

Outer Covers	Stretch, Anti-slip or Waterproof
Inner Covers	Zippered inner cover or Transparent cover with velcro



REDUCES PRESSURE
on bony prominence
(ischium and coccyx)



LESION PREVENTION



SHOCK AND VIBRATION ABSORPTION



GREATER SUPPORT
for individuals suffering
with muscle weakness



PREVENTS SLIDING

AERATION 7 / 10

IMPROVED POSTURE AND STABILITY 7 / 10

COMFORT 8 / 10

BALANCED DISTRIBUTION OF WEIGHT 7 / 10

OPTIMAL COMFORT

With a layer of dispersion foam in the posterior well, the Ultra™ cushion provides a deeper immersion of the ischial tuberosity to ensure optimal comfort.

Viscoelastic Foam

The design and composition of the Ultra™ prevents the pelvis from sliding forward and provides lateral support to improve balance and postural stability.

CORRECTIVE SEATING

Comfort Foam

The contours of the Ultra™ were determined by the analysis of data acquired with the use of pressure sensors. Our specially designed moulds are injected with a urethane-based dispersion foam to create a high-quality, high-performance postural aid. The Ultra™ provides both the firmness and support required to achieve the desired levels of comfort and stability.

PREFORMED FOAM BASE

CUSTOM DESIGNS

CONTOURED FOAM BASE

To increase the support offered by an air-cell cushion, Physipro™ can create a customized contoured foam base to provide additional postural stability and improve sitting balance. Physipro™'s Contoured Foam Base can also increase the seat depth of an air-cell cushion as well as facilitate the installation of postural components.

SPECIFICATIONS

Starting Retail Price	\$370
Product Code	S2360-... (2"), S2365-... (3"), S2370-... (4")
Product Type	Foam Cushion
Width	14" to 26"
Depth	14" to 22"
Thickness	2", 3" or 4"
Weight	2,0 lb (16" x 18" - 3")
Weight Capacity	14" to 20" width: 300 lb 21" to 26" width: 500 lb
Warranty	Cushion: 24 months limited warranty Cover: 6 months limited warranty

COMPOSITION

Bottom Layer	¼" Plastazote
Foam Base	Injected Urethane (LXA) - medium-firm

OPTIONS

Installation Choice	Flat
Postural Components	Compensator, Anti-Thrust Wedge, Anti-Sling Wedge, Pelvic Obliquity Wedge, Medial Thigh Abductor, Lateral Thigh Support and Lateral Pelvic Support.

COVERS

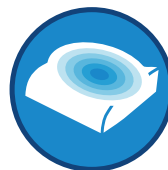
Outer Cover	Stretch
Inner Cover	Transparent cover with velcro



**PREVENTS
SLIDING**



**REDUCES
PRESSURE**
on bony prominence
(ischium and coccyx)



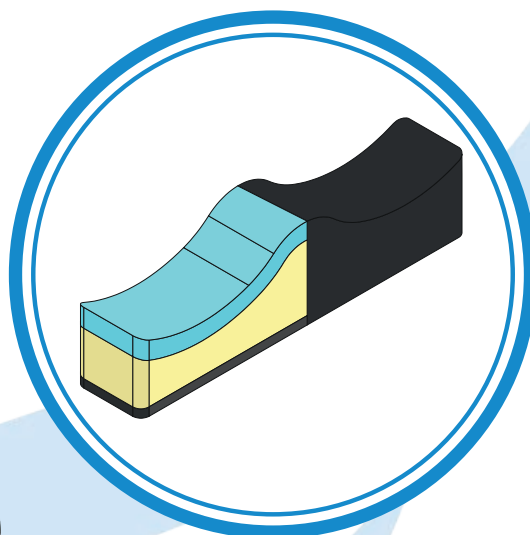
**WEIGHT AND
PRESSURE
DISTRIBUTION**



**IMPROVED
POSTURE AND
STABILITY**

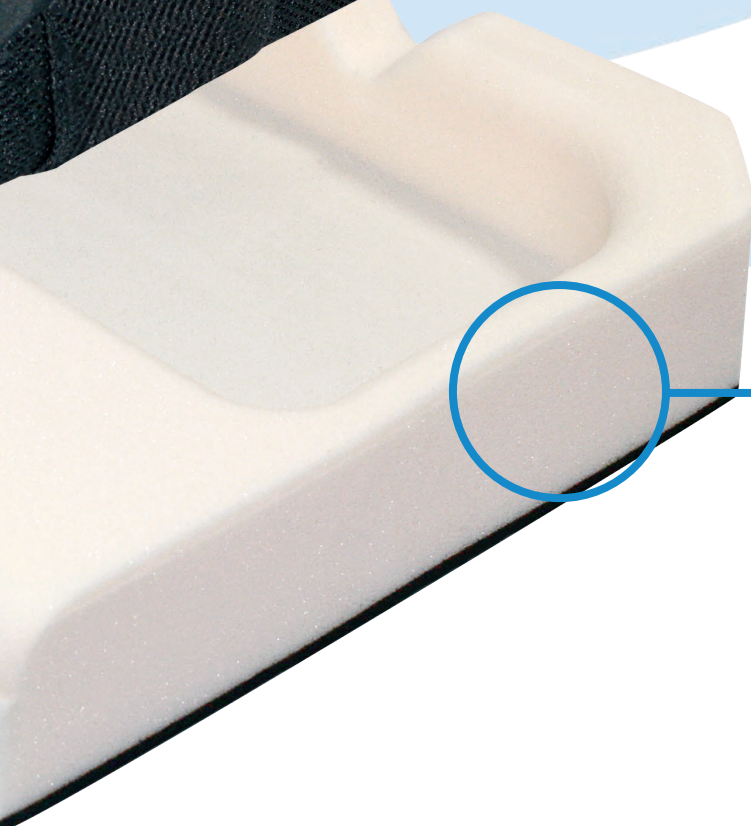


**GREATER
SUPPORT**
for individuals
suffering with
muscle weakness



AIR-CELL CUSHION COMPENSATOR

The Compensator is a postural component specifically designed for use with air cell cushions. Installed at the front of the seat plate, the compensator helps stabilize the cushion and increase seat depth. The soft contours of the Compensator promote lower limb alignment.



MADE-TO-MEASURE DIMENSIONS

Physipro's™ foam bases can be used with any air-cell cushion on the market. Crafted with precision, our foam bases are made to the exact measurements of the user's current cushion.

CUSTOM DESIGNS

FUSION®

The Fusion® cushion is completely custom made. A choice of multi-density foams, gels, postural components and installation options are offered in order to obtain a unique combination, specifically adapted to meet your postural needs.

NON-STANDARD OPTIONS

Construction Foam	EVA Foam ¼" or ½"
LXA Foam	Injected Urethane (LXA) - soft 1", 1 ½" or 2"
Comfort Foam	Urethane (VF-40) ½", 1" or 2" Latex 1" or 2"
Viscoelastic Foam	Viscoelastic Foam ½" or 1"
Memory Foam	Soft Memory Foam ½" or 1" Medium Memory Foam ½" or 1" Temper T36 ½" or 1" Temper T38 ½" or 1"
Gel	Aqua Blue Cubed Gel ½" (14" x 14" or 18" x 18") Aqua Blue Pebble Gel ½" (20" x 20") Silicone Gel ½" (14" x 14", 18" x 18" ou 20" x 20")
Installation Choice	Flat or Sling (ABS rigidizer available) or Built-In of 1", 1 ½" or 2"
Customized Shape	Anatomic, Hemiplegic, Contoured Depth, Recessed Sacral, Front Wedge, Rounded Front and Low Profile.
Postural Components	Anti-Thrust Wedge, Anti-Sling Wedge, Pelvic Obliquity Wedge, Medial Thigh Abductor, Lateral Thigh Support and Lateral Pelvic Support.

SPECIFICATIONS

Starting Retail Price	\$485
Product Code	S2955 (20" and less) S2956 (21" and over)
Product Type	Made-to-Measure Foam and Gel cushion
Width	10" to 26"
Depth	10" to 22"
Thickness	N/A
Weight	N/A
Weight Capacity	14" to 20" width: 300 lb 21" to 26" width: 500 lb
Warranty	Cushion: 24 months limited warranty Cover: 6 months limited warranty

COVERS

Outer Covers	Stretch, Anti-slip or Waterproof
Inner Covers	Zippered inner cover or Transparent cover with velcro



**OPTIMIZED
CUSHION
AERATION**



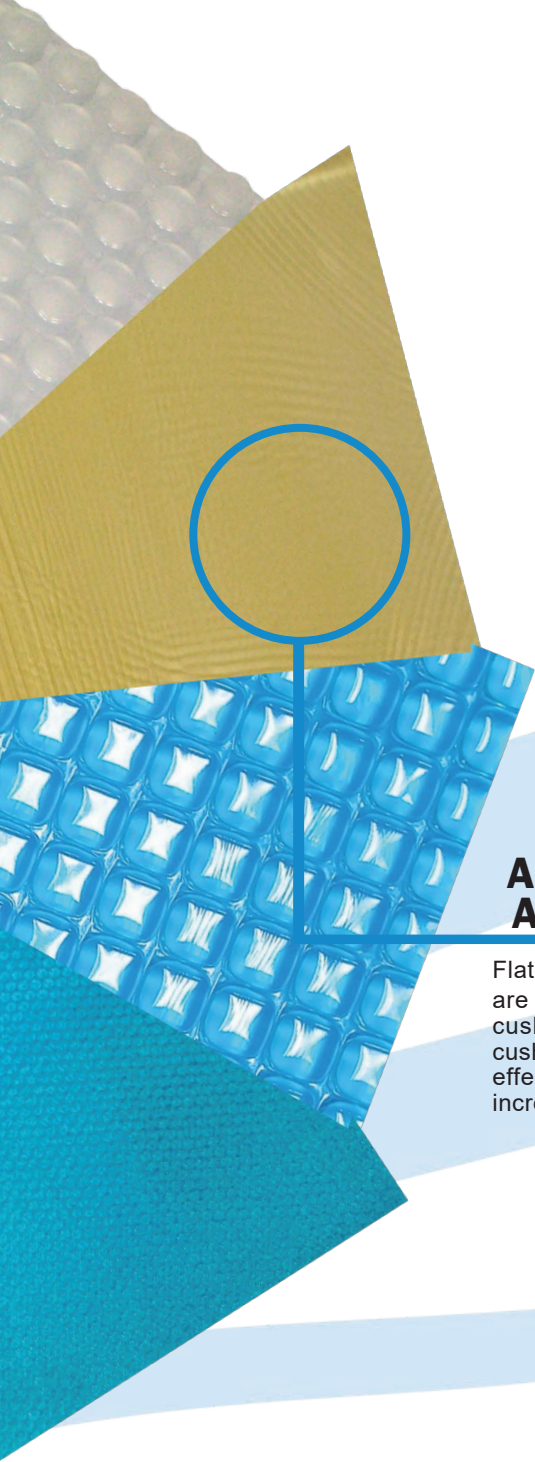
**IMPROVED
POSTURE
AND STABILITY**



COMFORT

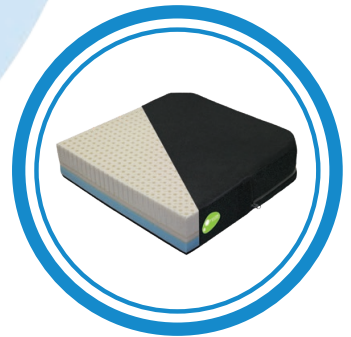
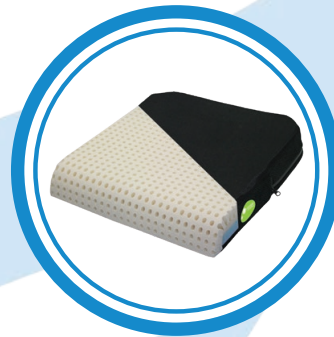


**WEIGHT AND
PRESSURE
DISTRIBUTION**



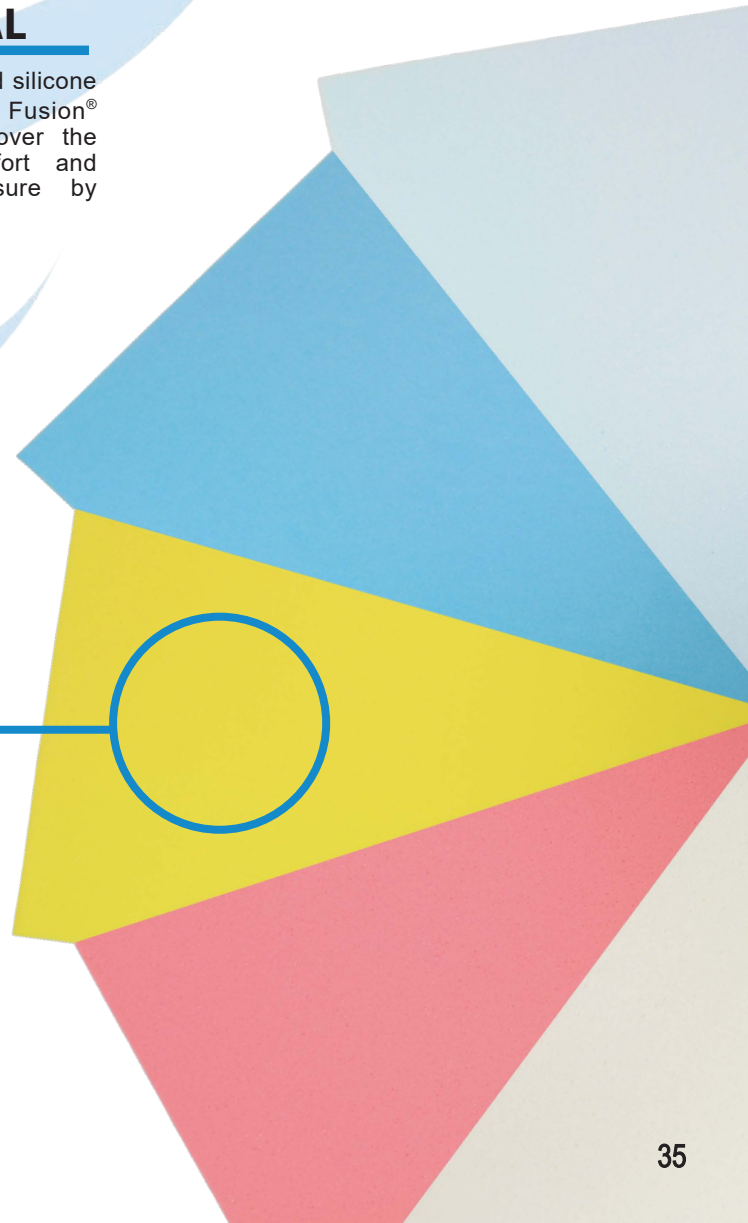
A VARIETY OF GELS AT YOUR DISPOSAL

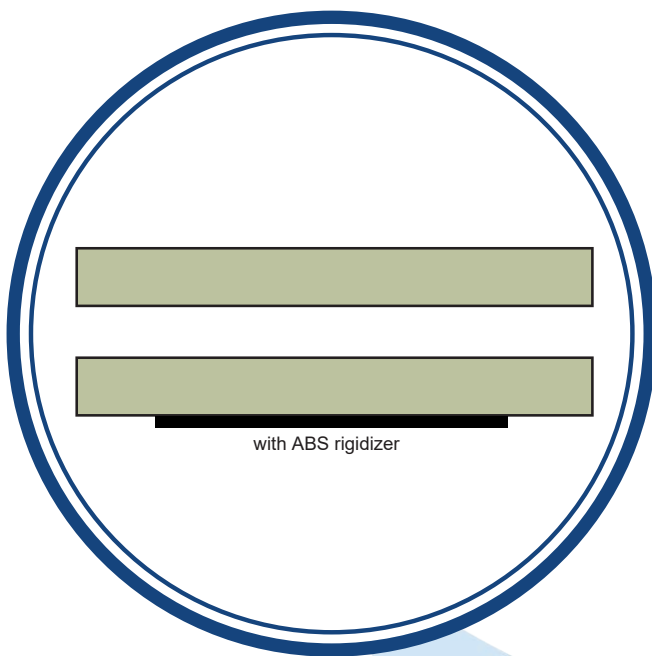
Flat gel, cubed gel, Pepple gel and silicone are available to customize your Fusion® cushion. A top layer of gel over the cushion, ensures optimal comfort and effectively redistributes pressure by increasing the contact surface.



A COMPLETE ASSORTMENT OF FOAMS

The Fusion® cushion is constructed with three layers of foam. With different levels of density, each foam has a specific purpose: our high-density foam promotes a stable seated posture, our dispersion foam provides greater skin protection and our low-density foam offers optimal comfort. No less than 23 different foam choices are offered to customize your cushion.



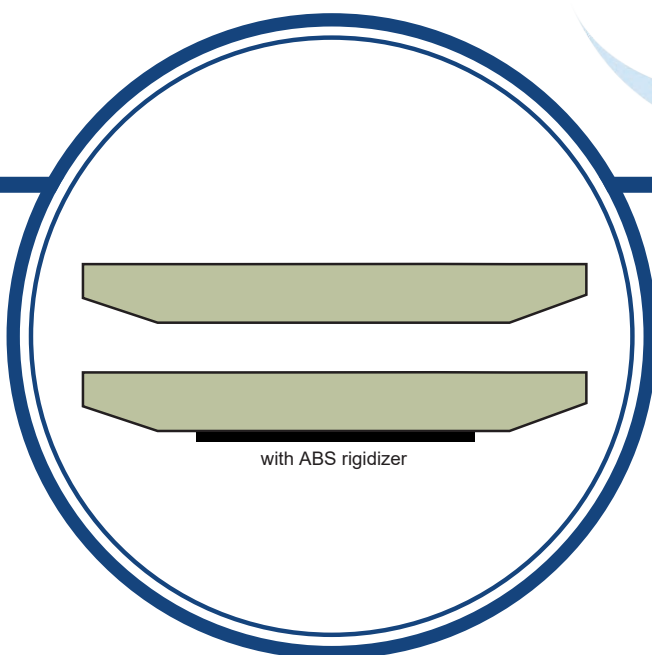
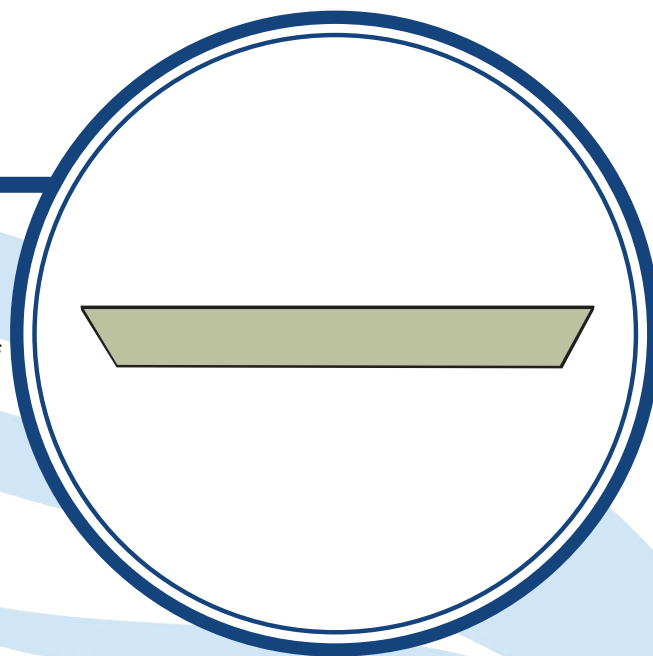


FLAT CUT

For installation on a rigid plate attached to the seat rails, a flat cushion helps keep the seat level and stable. An ABS rigidizer can be added as an option to increase stability.

For installation on a rigid plate attached with mounting hooks, the cushion is slightly trimmed at the edges of the base to create space for the seat rails. The bevel shape allows the cushion to be fully integrated into the seat structure.

BUILT-IN



SLING

For installation on a sling seat, the cushion edges are slanted in order to eliminate hammocking by conforming to the fabric. An ABS rigidizer can be added as an option to increase stability.

SPECIFICATIONS

Specification	Flat	Built-In	Sling
Code	S1900-...	S1901-...-...	S1902-...
Depth	N/A	1", 1 ½", 2"	N/A



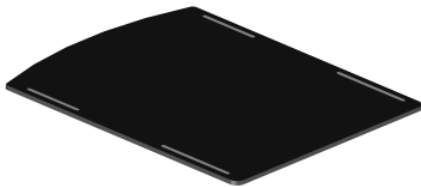
RIGID SEAT

The rigid seat provides a firm and stable base of support for a seat cushion and reduces the hammocking effect of sling upholstery.

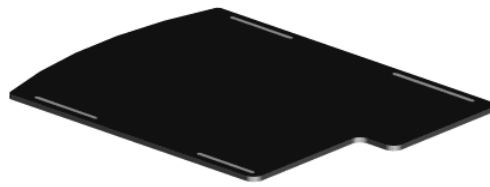
The mounting hook adjustments allows the seat base to be raised or lowered and set at an angle, this ensures that the appropriate seat-to-floor height and the preferred seat plane tilt is obtained.

Proper positioning of the rigid seat helps maintain a comfortable and functional seating position.

SHAPE CHOICES



Conventional Seat



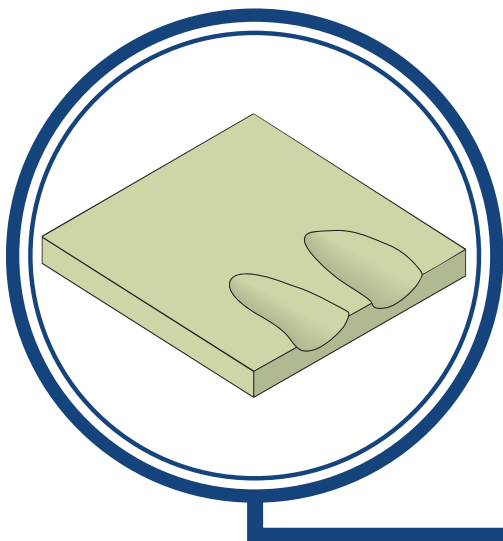
Conventional Seat with Depth Contour



Height / Angle Adjustable Seat



Height / Angle Adjustable Seat Contour

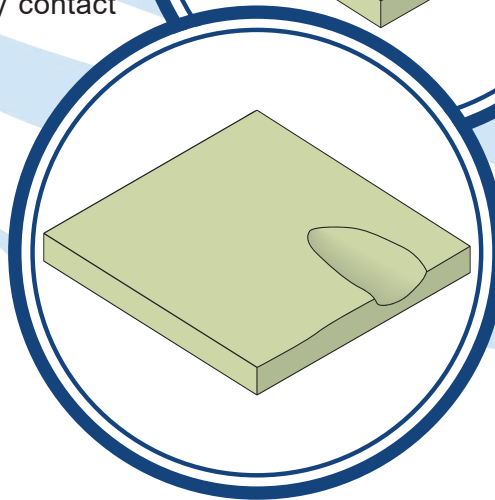
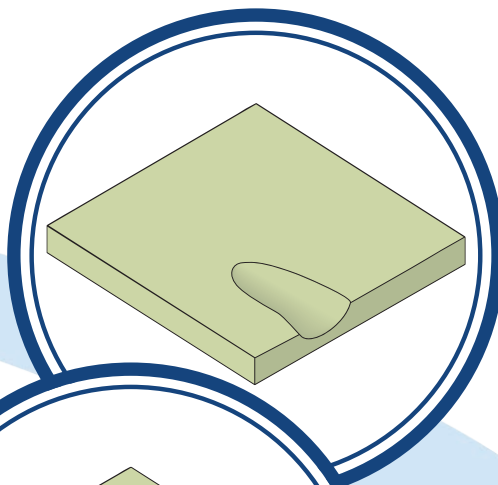


ANATOMIC

The anatomic shape adapts to the natural shape of the body and improves pressure distribution by increasing the contact area. The seat is trimmed at the back to prevent pelvic tilt and two grooves are placed at the front of the cushion to promote a natural alignment of the lower limbs and improve foot propulsion.

LOWERED

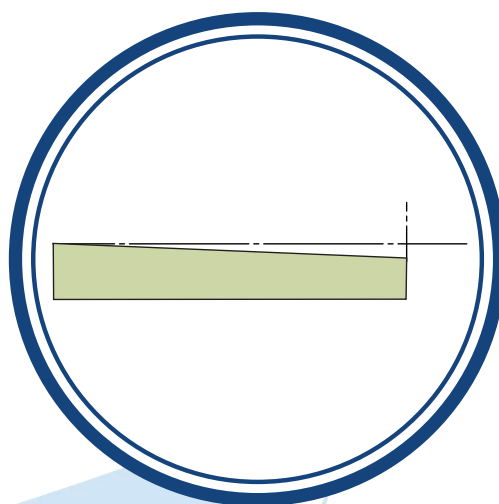
The lowered shape is particularly useful in case of hemiplegia. This shape enables the affected limbs to be elevated (therefore creating the effect of an anti-thrust wedge) and facilitate hand-foot propulsion by permitting the functional lower limb to easily contact the floor.



SPECIFICATIONS		
Specification	Anatomic	Lowered
Code	S1332-...-CA	S1332-...-CSB-...
Lowering	1"	1"

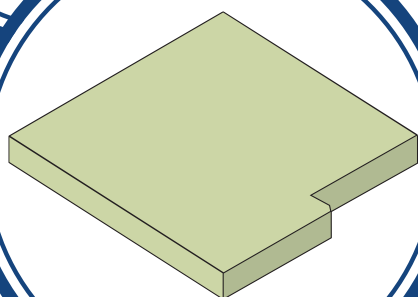
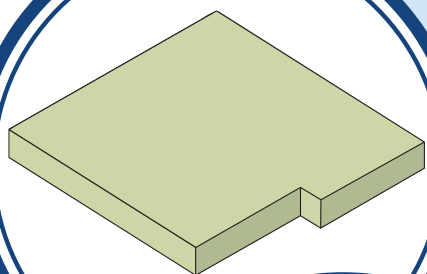
LOW PROFILE

The low profile shape is reduced by 1 inch in the front in order to obtain a lower seat height to facilitates lower limb propulsion and help the user transfers into a standing position.



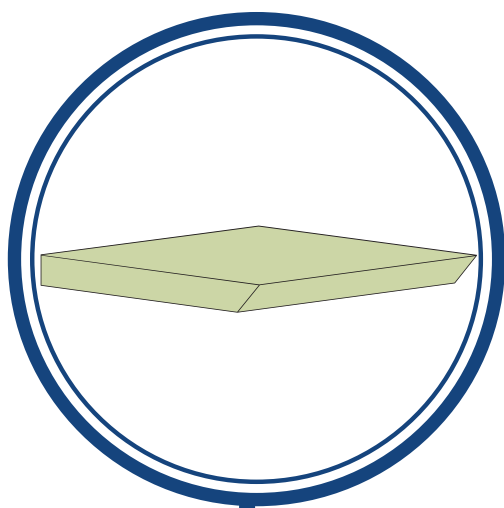
CONTOURED DEPTH

A contoured depth shape is recommended for users with unequal lower limb length. In case involving pelvic rotation, hip dislocation or when single leg propulsion is necessary, the contoured depth shape can meet the user's needs.



SPECIFICATIONS

Specification	Low Profile	Contoured Depth
Code	S1332-...-PB	S1332-...-CPI-...
Uneven Depth	N/A	1" ou 2"
Lowering	1"	N/A

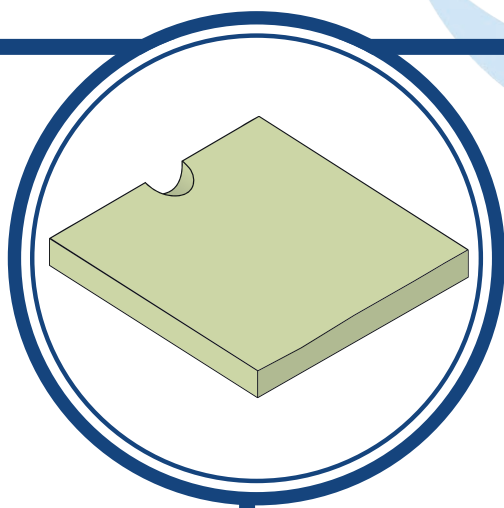
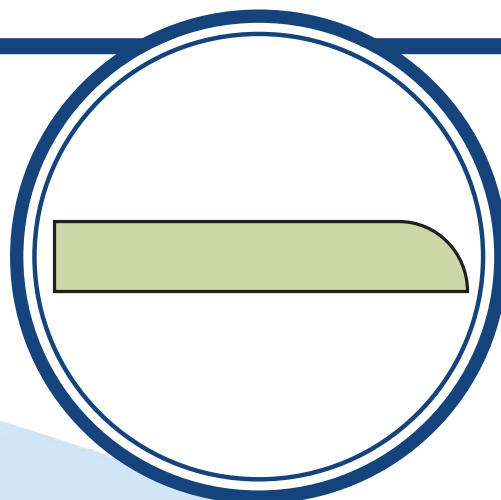


FRONT WEDGE

The front wedge releases pressure at the popliteal fossa area and the hamstrings when the lower limbs are in retraction. The foam is shaped to a bevel at the front of the cushion in order to provide the required clearance.

ROUNDED FRONT

The rounded front decreases pressure caused by a straight cushion at the popliteal fossa area. The foam is slightly trimmed at the front to soften the edge and create a natural curve that conforms to the shape of the back of the knee.



RECESSED SACRAL

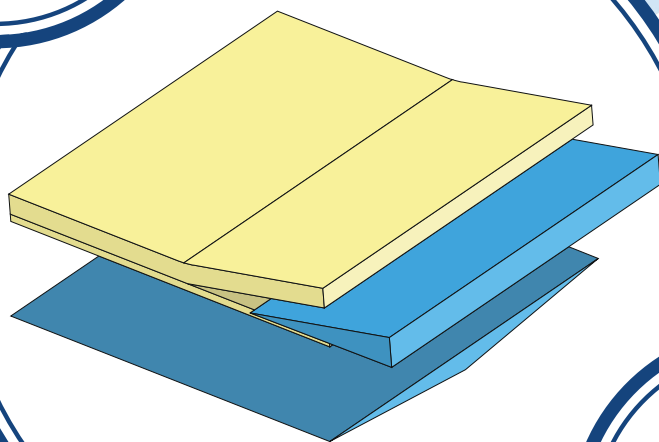
The recessed shape at the sacral region is designed to effectively limit contact of high-risk areas during severe pelvic tilt (retroversion). A cut-out at the back of the cushion provides relief for the coccyx.

SPECIFICATIONS

Specification	Front Wedge	Rounded Front	Recessed Sacral
Code	S1332-...-DO	S1332-...-DA	S1332-...-DS
Clearance	2 ½"	N/A	N/A

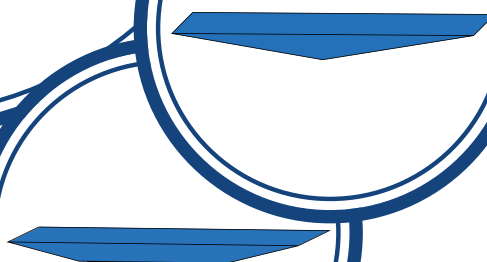
ANTI-THRUST WEDGE

The anti-thrust wedge is installed at the front of the cushion. This postural component prevents sliding, helps manage episodes of spasticity and improves pressure distribution.



ANTI-SLING WEDGE

Installed directly under the cushion, the anti-sling wedge is used to counter problems caused by the deterioration of a seat cover due to time. The anti-sling wedge protects the user against the development of acute pressure on the legs by transforming the seat into a flat surface.

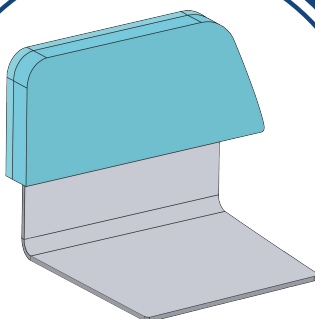
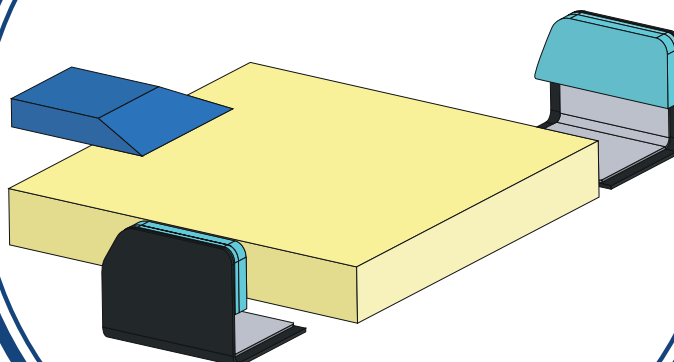
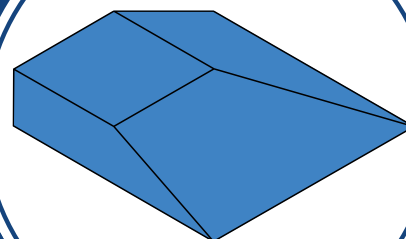


SPECIFICATIONS

Specification	Anti-Thrust Wedge	Anti-Sling Wedge
Code for Flat Wedge	S2670-...	S2695-...
Code for Pointed Wedge	S2655-...	S2685-...
Width	Cushion adapted	Cushion adapted
Depth	8" (STD) or to your choice	Cushion adapted
Thickness	1", 1½" or 2"	1", 1½" or 2"
Adhesive	Velcro or Glue	Velcro or Glue
Cover	Available if fixed with velcro	Available if fixed with velcro

PELVIC OBLIQUITY WEDGE

The pelvic obliquity wedge is used to compensate for loss of gluteal muscle tone and reduce pelvic tilt.



LATERAL THIGH SUPPORT

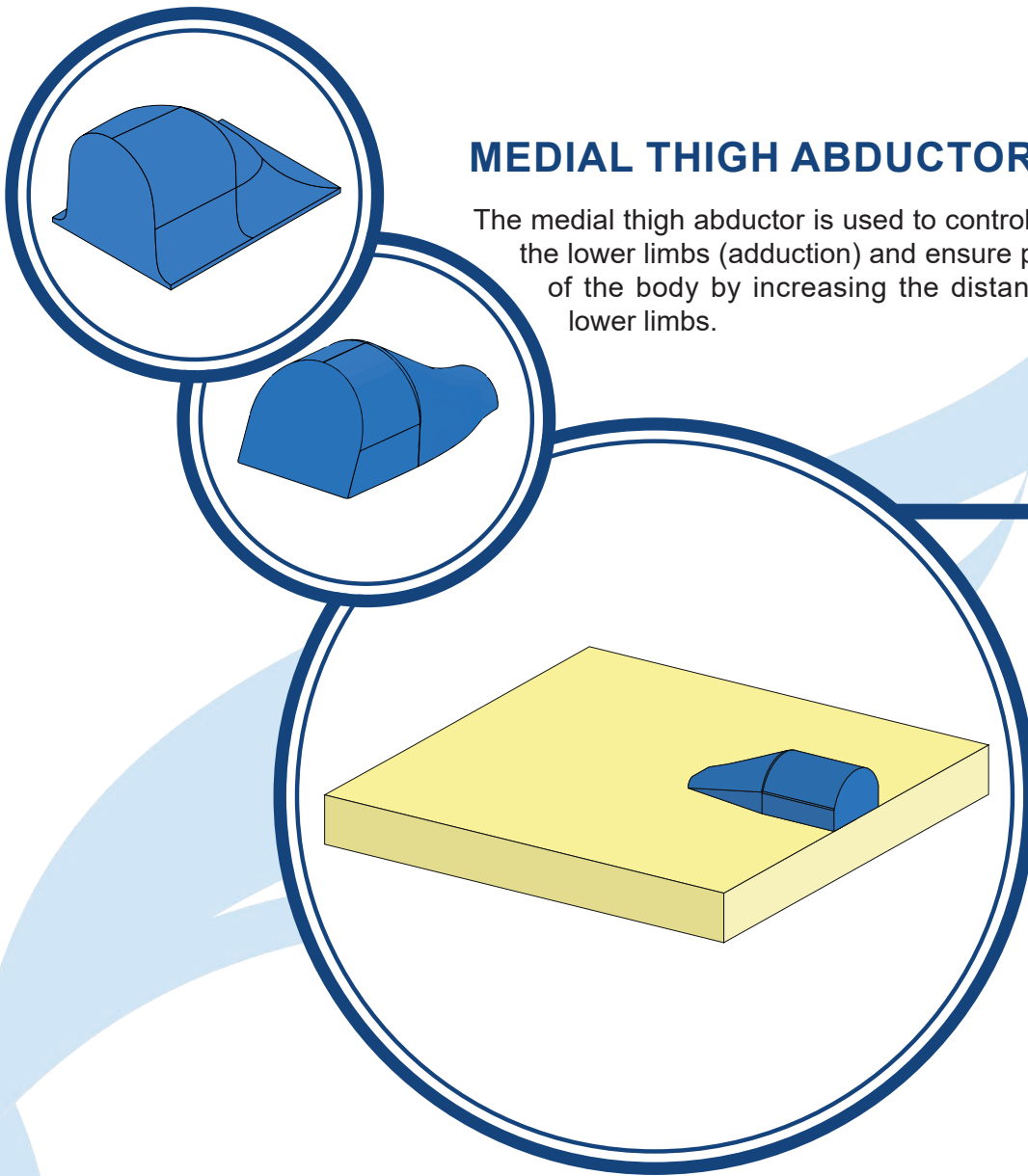
The lateral thigh support ensures a better alignment of the lower limbs by limiting the risk of sliding towards the outside of the cushion.

SPECIFICATIONS

Specification	Pelvic Obliquity Wedge	Lateral Thigh Support
Code	Urethane: S2675-... EVA Foam: S2680-...	S2965-...
Composition	Urethane or EVA Foam	EVA Foam and Soft Memory Foam
Dimension	W x D: 6" x 6", 8" x 8", 10" x 10"	H x D: 2" x 4", 3" x 5", 4" x 6"
Thickness	1", 1½" ou 2"	¾"
Adhesive	Velcro or Glue	Glue
Cover	Available if fixed with velcro	N/A

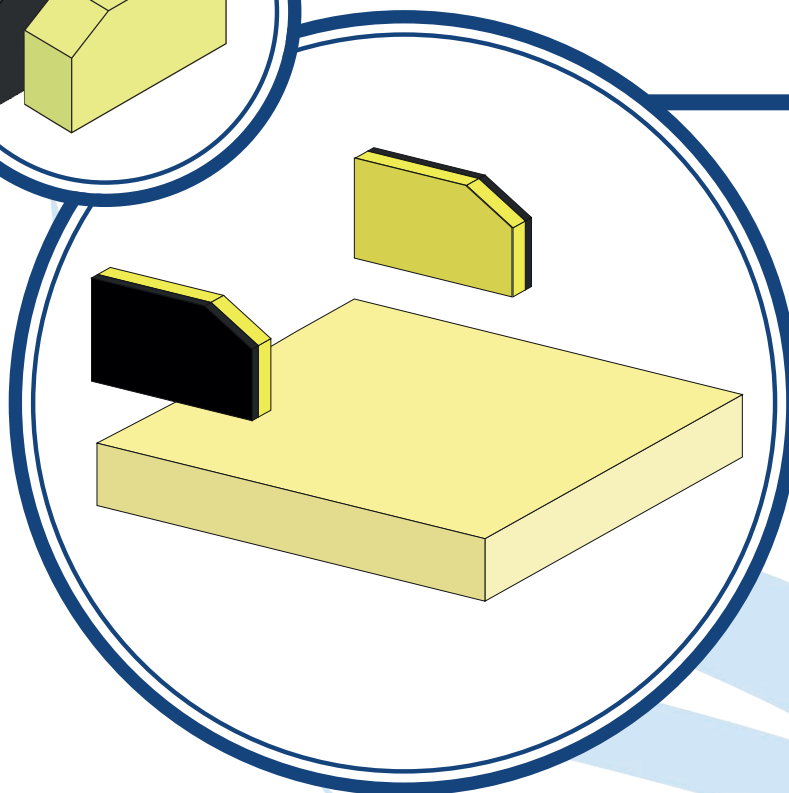
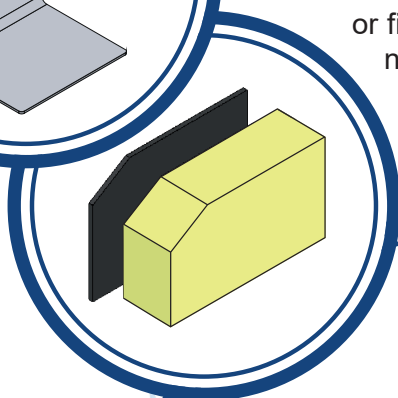
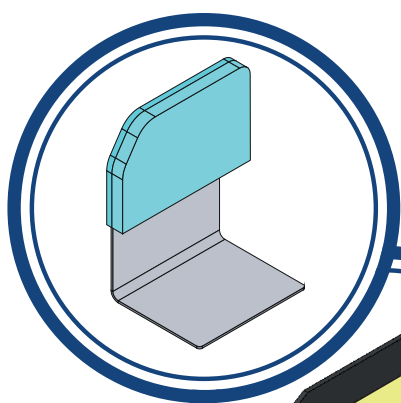
MEDIAL THIGH ABDUCTOR

The medial thigh abductor is used to control the proximity of the lower limbs (adduction) and ensure proper alignment of the body by increasing the distance between the lower limbs.



SPECIFICATIONS

Specification	Glued Medial Thigh ABD	Medial Thigh ABD with Velcro
Code	S2724-...	Urethane: S2725-... EVA Foam: S2726-...
Composition	EVA Foam	Urethane or Constructa Foam
Dimension (W x D x H)	2 ½" x 3" x 3" 3" x 4" x 4" 3 ½" x 5" x 5"	2" x 5" x 2" 3" x 7" x 2" 4" x 7" x 2 ½" 5" x 7" x 3"
Adhesive	Glue	Velcro
Cover	N/A	Available on demand

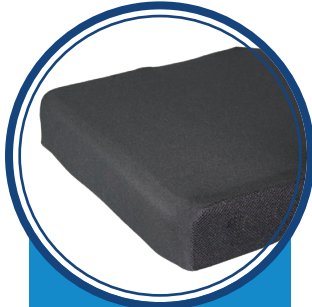


LATERAL PELVIC SUPPORT

The lateral pelvic support is used to reduce lower limb abduction and limit pelvic movement. Removable or fixed inside the cushion, this postural component can also be used to fill the space caused by a pelvic tilt.

SPECIFICATIONS			
Specification	Shaped Lateral Pelvic Support	Standard Lateral Pelvic Support	Non-Standard Lateral Pelvic Support
Code	S2890-...	1" thick: S2861-... 1 ½ thick: S2866-... 2" thick: S2871-...	S2883
Composition	EVA Foam and Soft Memory Foam	Firm Urethane	Firm Urethane ½" or 1" EVA Foam ¼" or ½" Soft Memory Foam ½" or 1"
Dimension (H x D)	3" x 6" 4" x 7" 5" x 8"	5 ½" x 9 ½"	Adapted to your need
Thickness	¾"	1", 1 ½" or 2"	Adapted to your need
Adhesive	Glue	On seat plate or armrests	On seat plate or armrests
Cover	N/A	Nylon or Waterproof Lycra	Nylon or Waterproof Lycra

COVERS

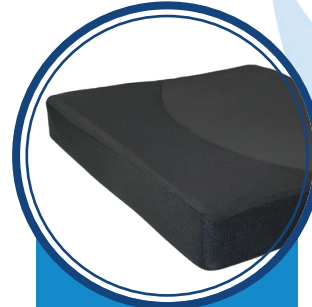


STRETCH

Made with a breathable fabric that promotes a good air flow, this cover can receive different positional components and helps eliminate the formation of surface tension.



AERATION

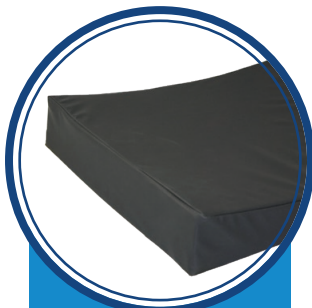


ANTI-SLIP

Prevents forward movement of the pelvis and helps maintain a balanced posture.



PREVENTS
SLIDING

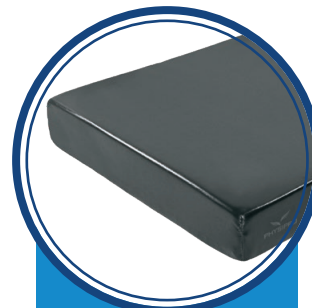


WATERPROOF

Helps with managing incontinence by protecting the cushion against fluids.
Water-resistant and easy to wipe and clean.



EASY
MAINTENANCE



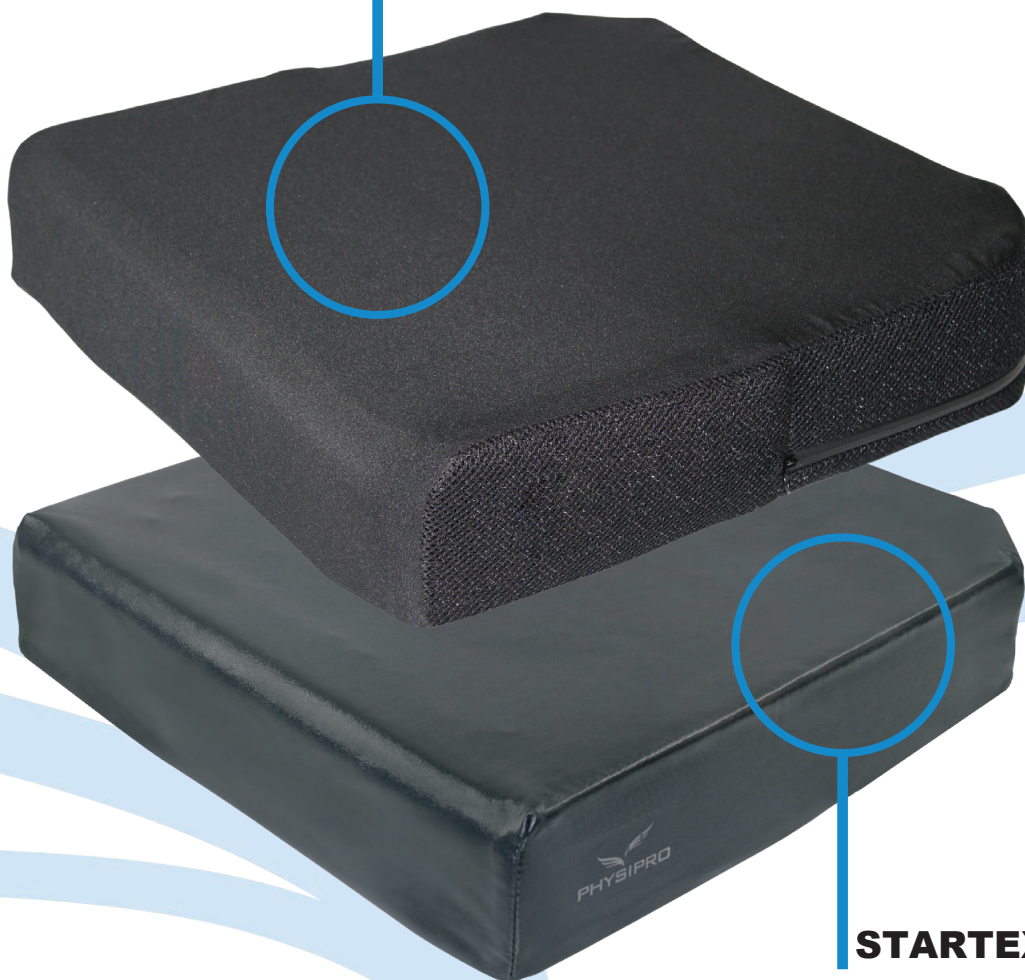
ZIPPERED INNER COVER

Made of an anti-slip and waterproof fabric with a satin finish, this cover fits to the shape of the cushion and is equipped with a sturdy water-resistant zipper.



EASY
MAINTENANCE

TRIPTEX U



STARTEX TPU

COVERS

Cushion	Stretch	Anti-slip	Waterproof	Zippered Inner Cover
Brio™	S2951-...	S3051-...	S5012-...	S2953-...
C3S™	S3000-...	S3003-...	S5014-...	S3005-...
Contour Insert™	S2362-... (2") S2367-... (3") S2372-... (4")	S2364-... (2") S2369-... (3") S2374-... (4")	S5008-... (2") S5015-... (3") S5016-... (4")	S2390 (2") S2395 (3") S2400 (4")
Ellipse™	S2951-...	S3043-...	S5013-...	S29955-...
LXA™	S2460-...	S2464-...	S5140-...	S5150-...
Physiair™	S5001-...	S5006-...	S5007-...	S5002-...
Zero Pressure™	S1270-...	S1262-...	S5010-...	S1330-...
Resolve™ & Resolve Air™	S2200-... (Resolve™ with Lateral Pelvic Support) S2205-... (Resolve™ without Lateral Pelvic Support) S2210-... (Resolve™ Low Profile with Lateral Pelvic Support) S2215-... (Resolve™ Low Profile without Lateral Pelvic Support)	N/A	S2220-... (Resolve™ with Lateral Pelvic Support) S2225-... (Resolve™ without Lateral Pelvic Support) S2230-... (Resolve™ Low Profile with Lateral Pelvic Support) S2235-... (Resolve™ Low Profile without Lateral Pelvic Support)	N/A
Siliko™	S5110-...	S5130-...	S5140-...	S5150-...
Ultra™	S1271-...	S1279-...	S5009-...	S1277-...
Air Cells Contour Cushion	S2375-... (2") S2380-... (3") S2385-... (4")	N/A	N/A.	N/A
Fusion®	S2290-...	S2292-...	S2240-...	S2295-...



BED POSITIONING

WHY?

Bed positioning is an important factor in certain rehabilitation programs. A correct positioning increase comfort and promotes a healthy sleep and reduces the risk of developing contractures and bed sores. Friction and sheer are noticeably reduced with the use of bed positioning products. These devices are specifically designed to prevent the development of pressure sores and contribute to the healing process of existing skin lesions.

HOW DOES IT WORK?

A bed positioning program consist of establishing for each patient a series of positional changes adapted to the patient's various daily activities (meals, naps, washroom, medical care, etc.).

For healthcare providers, the use of flexible and versatile positioning products such as cushions and bolsters as well as customized devices like microbead positioning cushions are increasingly common.

These postural aids contribute by helping the patient obtain and maintain the proper positions needed throughout the day and helps relieve the patient's discomfort.

FOR WHO?



**BEDRIDDEN PATIENTS
AWAITING POST
OPERATIVE CARE.**



**PATIENTS WITH
REDUCED MOBILITY**



**PATIENTS IN RECOVERY
WHO ARE BEDRIDDEN FOR
LONG PERIODS OF TIME**



**ELDERLY PATIENTS
LIVING IN NURSING
HOMES OR IN
LONG-TERM CARE
FACILITIES**

BED POSITIONING

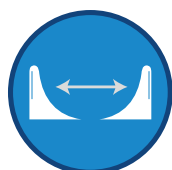
IN BED THORACIC SUPPORT



**LATERAL POSITIONING
OF THE TORSO**



**PRESSURE
REDUCTION**



**EASILY
ADJUSTABLE**



**WATERPROOF COVER,
RESISTANT TO
CHLORUX AND VIROX**



The thoracic supports are installed at each side of the torso to help stabilize the patient while seated in a Fowler position. The In Bed Thoracic Support system is simple, lightweight and easy to use for the health care provider. This system helps control lateral movement of the torso and evenly distribute pressure over a larger surface in order to improve respiratory function and gastrointestinal transit. Easy to install on hospital beds and equipped with velcro strips that enable precise adjustments.

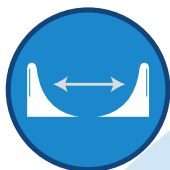
SPECIFICATIONS

Specification	Kit
Code	LI8070
Composition	Thoracic support cushions with Startex covers and Startex velcro fabric
Specification	Cover
Code	Left thoracic support: LI8095 Right thoracic support: LI8090

ANTI-FALL BED SYSTEM



**LATERAL POSITIONING
OF THE TORSO**



**EASILY
ADJUSTABLE**



**WATERPROOF COVER,
RESISTANT TO
CHLORUX AND VIROX**



The Anti-Fall Bed System prevents the user from falling out of bed and reduces the risk of bedrail entrapment. Three anti-fall cushions placed on either side of the bed, create a comfortable barrier between the user and the edge of the mattress. Cushions can be positioned at a 45 or 90 degree angle depending on the postural needs of the user. Made with hospital quality fabric that is fluid proof, antimicrobial, hypoallergic and flame retardant.

This system is intended for use on mattress with a maximal width of 38" (96 cm).

SPECIFICATIONS

Specification	Kit
Code	Bilateral system (6 cushions): LI8465 Unilateral system (3 cushions): LI8470
Composition	Anti-fall cushions with Startex covers and Startex velcro fabric
Dimensions	Anti-fall cushion: 11½" x 24" x 6" Velcro fabric : 36" x 80"

MICROBEAD POSITIONING CUSHIONS



CIRCULAR CUSHION

The circular cushion comfortably supports and stabilizes the patient's head when placed in a supine position.

TECHNICAL SPECIFICATIONS

Specification	Cushion
Code	LI8410
Weight	1,1 lb
Dimension	18" x 18"
Specification	Cover
Code	Startex: LI8415 Bamboo: LI8415_BAMBOU

CYLINDER CUSHION

This multi-purpose cushion can be used in a variety of positions, notably under the knees to reduce lumbar lordosis. Combined with a knee abduction cushion, it provides the necessary support to effectively control lower limb adduction.



TECHNICAL SPECIFICATIONS

Specification	Cushion
Code	LI8340
Weight	1,4 lb
Dimension	8" x 23 ½"
Specification	Cover
Code	Startex: LI8345 Bamboo: LI8345_BAMBOU

KNEE ABDUCTION CUSHION

The knee abduction cushion prevents the development of pressure ulcers behind the knees and ankles. Combined with a cylinder cushion, this cushion is beneficial in cases of lower limb adduction.



TECHNICAL SPECIFICATIONS

Specification	Cushion
Code	LI8310
Weight	0,8 lb
Dimension	23 ½" x 13 ½"
Specification	Cover
Code	Startex: LI8315 Bamboo: LI8315_BAMBOU

HIP ABDUCTION CUSHION

The hip abduction cushion stabilizes the lower limbs and keeps the patient's hip straight while laying in bed, it also prevents the hip from moving out of joint by preserving the natural alignment of the lower limbs.

TECHNICAL SPECIFICATIONS	
Specification	Cushion
Code	LI8370
Weight	0,9 lb
Dimension	13 ½" x 11"
Specification	Cover
Code	Startex: LI8375 Bamboo: LI8375_BAMBOU



BED POSITIONING



30° LATERAL POSITIONING CUSHION

The 30° lateral positioning cushion provides comfort when positioning the torso, pelvis and knees in a 30° lateral decubitus position. The integrated head pillow provides greater comfort. This cushion is particularly appreciated by pregnant women.

TECHNICAL SPECIFICATIONS

Specification	Cushion
Code	Less than 165 cm: LI8400 More than 165 cm: LI8380
Weight	Less than 165 cm: 4,4 lb More than 165 cm: 4,8 lb
Dimension	Less than 165 cm: 67" x 29" More than 165 cm: 71 ½" x 21"
Specification	Cover
Code (less than 165 cm)	Startex: LI8405 Bamboo: LI8405_BAMBOU
Code (more than 165 cm)	Startex: LI8385 Bamboo: LI8385_BAMBOU

POSITIONING CUSHION FOR HEEL AND/OR HAND

This cushion is recommended for patients who are placed in a supine position, the health care provider places the cushions underneath the forearms and legs to reduce pressure on the elbows and heels.

TECHNICAL SPECIFICATIONS	
Specification	Cushion
Code	Hand Cushion: LI8360 Heel Cushion: LI8350
Weight	0,5 lb
Dimension	15" x 8"
Specification	Cover
Code (Hand Cushion)	Startex: LI8365 Bamboo: LI8365_BAMBOU
Code (Heel Cushion)	Startex: LI8355 Bamboo: LI8355_BAMBOU



HALF MOON POSITIONING CUSHION

The half moon cushion comfortably stabilizes the patient's torso and pelvis while in a supine position, while also alleviating pressure on the elbows. Adapts perfectly to various morphologies and is particularly useful for patients coping with hemiplegia.

TECHNICAL SPECIFICATIONS

Specification	Cushion
Code	LI8390
Weight	4,2 lb
Dimension	54" x 31 ½"
Specification	Cover
Code	Startex: LI8395 Bamboo: LI8395_BAMBOU

MULTI PURPOSE CUSHION (SMALL AND MEDIUM)

These multi purpose cushions are ultra light, highly practical and offer a multitude of possible uses.

TECHNICAL SPECIFICATIONS

Specification	Cushion
Code	Small size: LI8320 Medium size: LI8330
Weight	Small size: 0,5 lb Medium size: 1,27 lb
Dimension	Small size: 14 ½" x 10" Medium size: 22" x 15 ½"
Specification	Cover
Code (Small size)	Startex: LI8325 Bamboo: LI8325_BAMBOU
Code (Medium size)	Startex: LI8335 Bamboo: LI8335_BAMBOU



POSITIONING CUSHIONS



TEARDROP CUSHION

This multi-purpose cushion can be used in a variety of positions. The teardrop cushion provides postural support and helps reduce the risk of developing bedsores. Made with a 1-inch layer of latex and stuffing foam.

TECHNICAL SPECIFICATIONS	
Specification	Cushion
Code	LI8435
Weight	2,7 lb
Dimension	12" x 8" X 28"
Specification	Cover
Code	Startex: LI8437 Bamboo: LI8436

BACKRESTS

POSITIONING



PHYSIPRO®

Seating and mobility solutions



The Axis® tension adjustable backrest offers superior back support and comfort. Characterized by its unilateral strap system, the Axis® backrest conveniently enables continuous and precise adjustments in order to ensure better support for individuals with progressive chronic diseases.

TECHNICAL SPECIFICATIONS

Retail Price from	\$395
Product Code	Standard : D5209 With Velcro : D5211
Product Type	Tension adjustable backrest
Width	10" to 24"
Height	12" to 24"
Thickness	1"
Weight	1,9 lb (17" x 20")

COMPOSITION

Cushioning	1" Urethane
Straps	Nylon
Mounting system	Screws and «One Wrap» Velcro straps

OPTIONS

Lateral supports	Fixed to the wheelchair canes, Anti-Hammock Effect, Adjustable or Foldable
Cushioning	½" or 1" Urethane, ½" or 1" Viscoelastic foam, 1" Stimulite, ½" or 1" Soft memory foam, ½" to 1" Temper T36, 1" Latex and ¼" Plastazote
Accessories	Booster cushion, lumbar strap, lumbar and thoracolumbar system and tension bar.
Postural components	Thoracic wedge, lumbar wedge, thoracolumbar wedge and sacrolumbar corrector

COVERS

Outer cover	Basic cover
Incontinence cover	Transparent cover with velcro



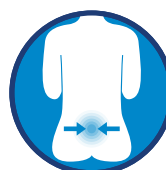
UNIFORM DISTRIBUTION
of pressure and weight



EASE OF INSTALLATION AND CARE



COMPENSATES BASIC & COMPLEX POSTURAL DEVIATION



EFFICIENT LUMBAR SUPPORT



EASILY ADAPTS
to changing postural needs

EASE OF INSTALLATION 9 / 10

PRECISION ADJUSTMENT 7 / 10

COMFORT 8 / 10

POSTURE CORRECTION 7 / 10

By its design and simple and effective adjustment system, the Axis® backrest adapts to the shape of the user's back and can be easily adjusted to accommodate different pathologies. The straps of the Axis® are equipped with Velcro bands that permit easy adjustments of the backrest tension.

SIMPLE AND PRECISE ADJUSTMENTS



SUPERIOR COMFORT

The standard Axis® backrest is cushioned with a layer of urethane, Physipro™ offers additional cushioning options for users who require a deeper immersion.

Installed in the lumbar region, this system helps to correct an anterior pelvic tilt or, if needed, maximises the support surface in cases of lordosis. Installed at the thoracic region, this system creates a forward projection in order to obtain a kyphotic profile.

LUMBAR AND THORACOLUM- BAR SYSTEM



Comfortable, lightweight, durable and easy to use, The Premium™ ensures complete bilateral control of the posterior and anterior curvatures of the spine, providing the ideal back support.

TECHNICAL SPECIFICATIONS

Retail price from	\$410
Product code	Standard: D5200 With velcro: D5440
Product type	Tension adjustable backrest
Width	12" to 26"
Height	12" to 26"
Thickness	1"
Weight	2,8 lbs (17" x 20")

COMPOSITION

Cushioning	1" Urethane
Straps	Nylon
Mounting system	Screws, straps and autoblock buckles

OPTIONS

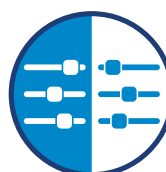
Lateral supports	Fixed to the wheelchair canes, Anti-Hammock Effect, Adjustable or Foldable
Cushioning	½" or 1" Urethane, ½" or 1" Viscoelastic foam, 1" Stimulite, ½" or 1" Soft memory foam, ½" to 1" Temper T36, 1" Latex and ¼" Plastazote
Accessories	Lumbar strap, booster cushion and tension bar.
Postural components	Thoracic wedge, lumbar wedge, thoracolumbar wedge and sacrolumbar corrector

COVERS

Outer cover	Basic cover
Incontinence cover	Transparent cover with velcro
Back post covers	With or without zipper



UNIFORM DISTRIBUTION
of pressure and weight



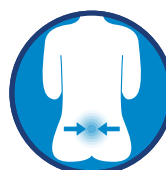
BILATERAL CONTROL OF THE BACK SUPPORT



SUPERIOR PRECISION ADJUSTMENT



COMPENSATES BASIC & COMPLEX POSTURAL DEVIATION



EFFICIENT LUMBAR SUPPORT



EASILY ADAPTS
to changing postural needs

EASE OF INSTALLATION 7 / 10

PRECISION ADJUSTMENT 9 / 10

COMFORT 9 / 10

POSTURE CORRECTION 9 / 10

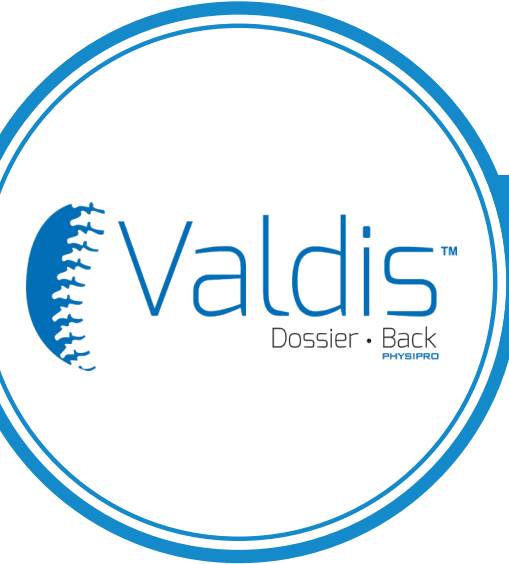
Offered as an option, back post covers simplify the installation of the Premium™ backrest to the wheelchair. These zippered covers allow you to instantly envelop the back posts, protecting the user against direct contact with their hard surface while also permitting quick installation of lateral supports if needed.

QUICK AND EASY INSTALLATION



The various straps of the Premium™ permit the user to easily modify and adapt the backrest to provide better back support in cases of kyphosis, lordosis, pelvic rotation and gibbosity. Equipped with autoblocking buckles, that are easily fastened or unfastened, the 1-inch straps maintain a durable and stable tension over the full length of the backrest.

SIMPLE AND DURABLE ADJUSTMENTS



The Valdis™ is a soft sling backrest designed to offer optimal comfort by adapting to the curves of the back. Capable of adapting to diverse morphologies, the Valdis™ is particularly recommended for people with Hyperkyphosis.

TECHNICAL SPECIFICATIONS

Retail price from	\$410
Product code	D5250
Product type	Tension adjustable backrest
Width	14" to 24"
Height	14" to 24"
Thickness	1 ½"
Weight	4,98 lbs (16" x 20")

COMPOSITION

Cushioning	1 ½" Square-patterned Urethane
Straps	Nylon
Mounting system	Screws and Zippered Back Post Cover

OPTIONS

Lateral supports	Fixed to the wheelchair canes, Adjustable or Foldable
Accessories	Tension bar

COVERS

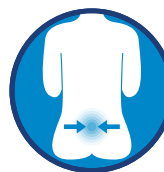
Outer cover	Basic cover
Incontinence cover	Transparent cover with velcro



UNIFORM DISTRIBUTION
of pressure and weight



SUPERIOR IMMERSION
of deformities, gibbosities or severe kyphosis



EFFICIENT LUMBAR SUPPORT

EASE OF INSTALLATION 9 / 10

PRECISION ADJUSTMENT 8 / 10

COMFORT 8 / 10

POSTURE CORRECTION 8 / 10

QUICK AND EASY INSTALLATION

The combination of Velcro fasteners and the zippered back post covers maintain the back cushion in place, effectively limiting movement inside the cover and preventing the cushion from sliding on the back posts. The cushioned back of the Valdis™ can be easily removed from the cover to facilitate cleaning.



The cushioned back of the Valdis™ is cut with precision in order to provide a deeper immersion. With a square-patterned cut that increases the cushions flexibility and suppleness, the Valdis™ offers optimal pressure distribution.

DEEPER IMMERSION

The high elasticity of the fabric and the straps of the Valdis™ allows a deeper immersion and helps create an adapted back support that is fitted to the user's specific postural structure. The presence of three adjustment straps at the lower back offers efficient support at the lumbar region and the addition of lateral supports increases trunk stability and balance.

COMPLETE SUPPORT



VELCRO BACK

Comfortable and lightweight, the Velcro Back is a soft and versatile postural aid, developed for persons with problems relating to core stability, this backrest can be fitted with various detachable lateral supports.

TECHNICAL SPECIFICATIONS

Retail price from	\$170
Product code	D4060 (14" x 16") D4065 (16" x 16") D4070 (18" x 16")
Product type	Tension adjustable backrest
Width	14", 16" or 18"
Height	16"
Thickness	1/16"
Weight	0,6 lb

COMPOSITION

Mounting system	Nylon straps with velcro and plastic buckles
Cushioning	Velcro Loop Fabric and Lycra (Ribbed Spandex)

OPTIONS

Lateral supports	Elevated, Shaped or Anti-hammock effect
Accessories	Booster Cushion



**SUPPORTS BASIC
POSTURAL
DEVIATIONS**



**EASY INSTALLATION
AND MAINTENANCE**



**IMPROVES CORE
STABILITY AND
POSTURE**

EASE OF INSTALLATION 9 / 10

PRECISION ADJUSTMENT 6 / 10

COMFORT 5 / 10

POSTURE CORRECTION 6 / 10

The Velcro Back adapts to the width of the wheelchair and is attached directly to the back posts with three 1½" adjustable nylon straps. Each strap is equipped with Velcro and a sturdy plastic buckle to ensure backrest tension is consistently maintained and that the backrest is held at the proper height.

QUICK AND EASY INSTALLATION





The HP2™ backrest line was designed with high performance and precision in mind. Characterised by a rigid shell that encompasses the user's back to provide overall lateral and central support, this backrest was created for persons with significant postural asymmetries

TECHNICAL SPECIFICATIONS

Retail price from	\$822
Product code	Profiled: HPP Contour: HPC
Product type	Rigid contoured shell
Width	12" to 24"
Height	12" to 24"
Thickness	1 ¾"
Weight	7,4 lbs (16" x 18" - without lateral supports) 8,8 lbs (16" x 18" - with lateral supports)

COMPOSITION

Cushioning	¼" Plastazote, ½" Soft memory foam and 1" Viscoslastic foam
Mounting system	Two-point mounting system (with quick release)
Shell	13/16" Aluminum

OPTIONS

Lateral supports	Contour, Adjustable or Foldable
Accessories	Harness
Postural components	Thoracic wedge, lumbar wedge, thoracolumbar wedge and sacrolumbar corrector

COVERS

Outer cover	Standard cover (with cutout for headrest support) Cover with cutouts for headrest support and harness
Incontinence cover	Transparent cover with velcro



UNIFORM DISTRIBUTION
of pressure and weight



IMPROVES STABILITY AND POSTURE



REDUCES SLIDING AND LIMITS SPASTICITY



ENCOMPASSES BASIC & COMPLEX POSTURAL DEVIATION



INCREASES OVERALL SUPPORT OF THE BACK

EASE OF INSTALLATION 8 / 10

PRECISION ADJUSTMENT 9 / 10

COMFORT 9 / 10

POSTURE CORRECTION 8 / 10

A UNIQUE MOUNTING SYSTEM

The HP2™ can be quickly installed or removed from the back post in one easy movement. Designed with a backrest inclination range from 0° to 40°, this feature ensures an optimal sitting position.



The ergonomic shape of the HP2™ Profiled provides a greater liberty of movement of the upper limbs and facilitates manual propulsion. The lateral supports of the HP2™ Profiled can be adjusted both vertically and laterally as well as tilted to the desired angle in order to obtain enough space around the shoulder blades (to easily operate the handrims) and provide the highest level of comfort.

The HP2™ Contour offers improved overall back support. Ideal for persons who require additional trunk support.

TWO AVAILABLE MODELS



The Contour Cinch™ Backrest is composed of an easily adjustable and removable aluminum shell and soft foam padding. With lateral supports built directly into the hard shell, the Contour Cinch™ Backrest curves around the side of the body and helps keep the user in an upright position for better postural control.

TECHNICAL SPECIFICATIONS

Retail Price from	\$888
Product Code	CINCH....
Product Type	Rigid contoured shell
Width	14" to 26"
Height	16", 18", 20"
Thickness	1 ½"
Weight	6,4 lb (20" x 16")

COMPOSITION

Cushioning	1" Urethane and ½" viscoelastic foam
Mounting system	Mounting plate with universal clamp
Shell	Aluminum

COVERS

Outer cover	Basic cover with headrest cut-out
Incontinence cover	Transparent cover with velcro



**IMPROVES
STABILITY AND
POSTURE**



**UNIFORM
DISTRIBUTION**
of pressure and
weight



**EASE OF
INSTALLATION
AND CARE**

EASE OF INSTALLATION 9 / 10

PRECISION ADJUSTMENT 8 / 10

COMFORT 8 / 10

POSTURE CORRECTION 7 / 10

INTEGRATED LATERAL SUPPORTS

By its slightly curved profile and combination of foams, the Contoured Cinch backrest increases trunk stability and balance comfortably.

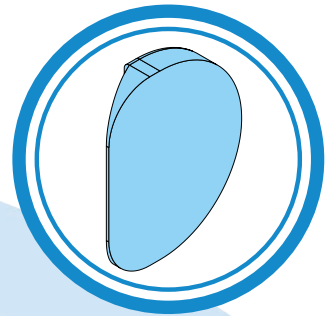
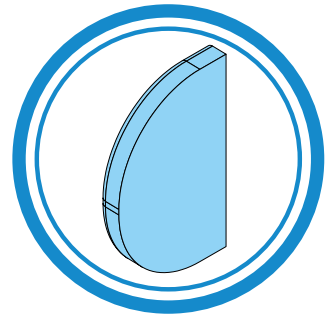
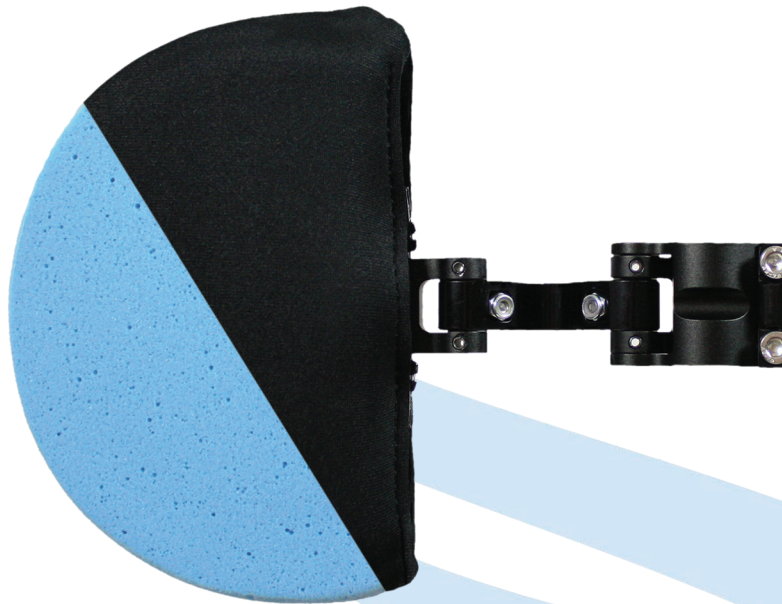


The mounting hardware of the Contoured Cinch backrest was designed to allow quick and easy installation and removal, while providing angle, height and depth adjustments to ensure the precise positioning of the backrest. The mounting hardware allows a depth adjustment range of 1.5".

QUICK & EASY INSTALLATION

FIXED TO THE WHEELCHAIR BACK POST

Fixed lateral supports provide the assistance needed to properly stabilize and balance the torso. The fixed lateral hardware allows a full 360-degree rotation of the lateral supports and are height-adjustable. Once secured to the back post, the mounting hardware diminishes the need of readjustment and increases durability.



LATERAL SUPPORTS SPECIFICATIONS

Product Code	See order forms or product catalog
Dimension (H x D)	4" x 4", 6" x 4 1/2", 7" x 4 1/2", 8" x 4 1/2",
Thickness	1 1/4"
Hardware Composition	Aluminum
Installation	Fixed on 3/4" or 1" tubing
Height-adjustment	Full-length of back post
Depth-adjustment	3/4"
Width between the laterals	Min: width of backrest -8" Max: width of backrest -3"
Inclination	360°

PADDING SPECIFICATIONS

Pad options	Straight or Profiled
Pad composition	1" Soft memory foam and 1/4" Plastazote

COVERS

Outer cover	1/16" Neoprene
-------------	----------------

CONTOUR

With the soft curved design and a composition of plastazote and urethane, the Contour laterals provide optimal stability and support. Available with the HP2 Contour only, the aluminum structure is fixed directly onto the rigid shell of the backrest.



LATERAL SUPPORTS SPECIFICATIONS

Product Code	See order forms or product catalog
Dimension (H x D)	7" x 6", 7" x 7", 8" x 6", 8" x 7", 9" x 6" or 9" x 7"
Thickness	Determined by backrest foam choices
Hardware Composition	Aluminum
Installation	Fixed to the rigid shell of backrest
Height-adjustment	1 ½"
Depth-adjustment	N/A
Width between the laterals	Width of backrest -5"

PADDING SPECIFICATIONS

Pad composition	¼" Plastazote and ½" Urethane
-----------------	-------------------------------

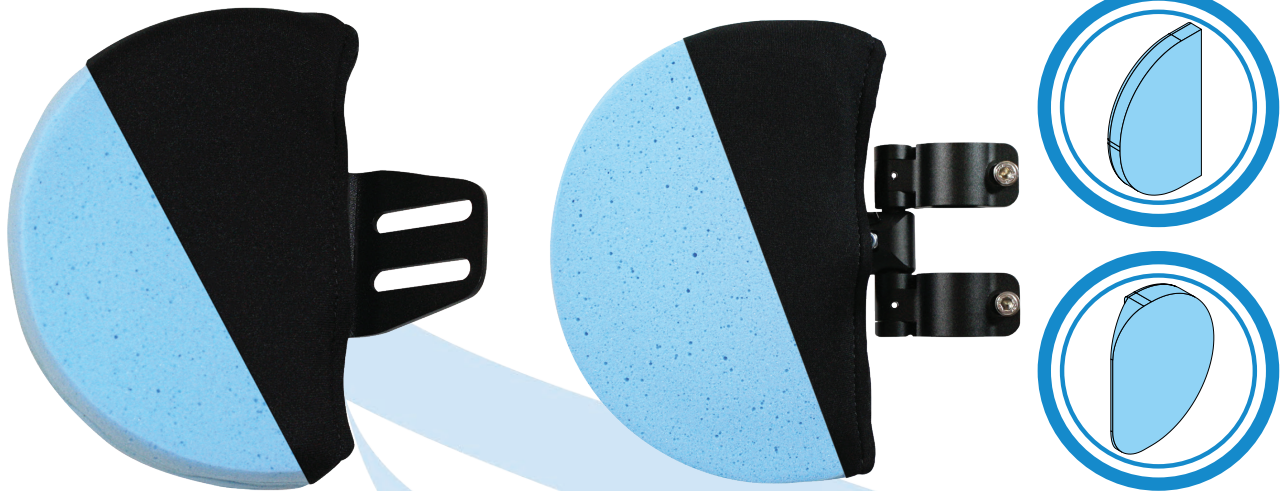
COVERS

Outer cover	1/16" Neoprene
-------------	----------------

Note Only available with the HP2 Contour Backrest.**

ADJUSTABLE

Adjustable lateral supports improve trunk and core alignment and help ensure a balanced distribution of pressure over the backrest surface. These adjustable supports can be easily removed if necessary and can be used unilaterally.



LATERAL SUPPORTS SPECIFICATIONS

Specification	For Rigid Back	For Sling Back
Product Code	See order forms or product catalog	See order forms or product catalog
Dimension (H x D)	4" x 4", 6" x 4 1/2", 7" x 4 1/2", 8" x 4 1/2", 8" x 5 1/2", 10" x 4 1/2" or 10" x 5 1/2"	6" x 4 1/2", 7" x 4 1/2", 8" x 4 1/2", 8" x 5 1/2", 10" x 4 1/2" or 10" x 5 1/2"
Hardware Composition	Aluminum	Aluminum
Installation	Fixed to the rigid shell of backrest	Fixed on 3/4" or 1" tubing
Height-adjustment	4" x 4": N/A 6" x 4 1/2": 1" 7" x 4 1/2": 1" 8" x 4 1/2": 1 1/2" 8" x 5 1/2": 1 1/2" 10" x 4 1/2": 3" 10" x 5 1/2": 3"	Full-length of back post
Depth-adjustment	1 3/4"	3/4"
Width between the laterals	Min: width of backrest -5" Max: width of backrest -3"	Min: width of backrest -4" Max: width of backrest -2"

PADDING SPECIFICATIONS

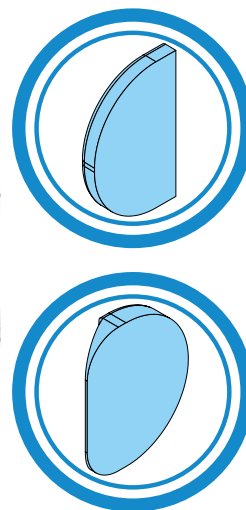
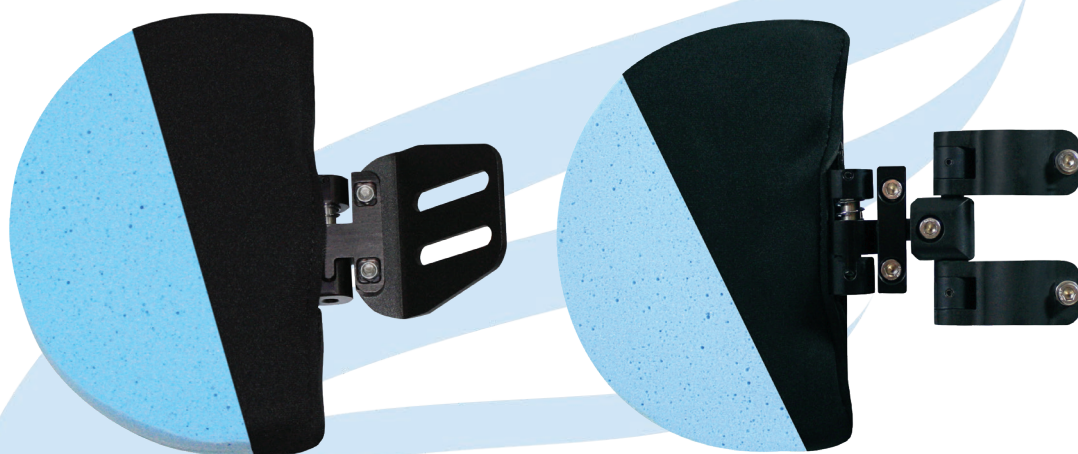
Pad options	Straight or Profiled	Straight or Profiled
Pad composition	1" Soft memory foam and 1/4" Plastazote	1" Soft memory foam and 1/4" Plastazote

COVERS

Outer cover	1/16" Neoprene	1/16" Neoprene
-------------	----------------	----------------

FOLDABLE AND ADJUSTABLE

The foldable and adjustable lateral supports facilitate transfers by enabling the lateral supports to be moved aside with a pivoting mechanism.



LATERAL SUPPORTS SPECIFICATIONS

Specification	For Rigid Back	For Sling Back
Product Code	See order forms or product catalog	See order forms or product catalog
Dimension (H x D)	4" x 4", 6" x 4 1/2", 7" x 4 1/2", 8" x 4 1/2", 8" x 5 1/2", 10" x 4 1/2" or 10" x 5 1/2"	6" x 4 1/2", 7" x 4 1/2", 8" x 4 1/2", 8" x 5 1/2", 10" x 4 1/2" or 10" x 5 1/2"
Hardware Composition	Aluminum	Aluminum
Installation	Fixed to the rigid shell of backrest	Fixed on 3/4" or 1" tubing
Height-adjustment	4" x 4": N/A 6" x 4 1/2": 1" 7" x 4 1/2": 1" 8" x 4 1/2": 1 1/2" 8" x 5 1/2": 1 1/2" 10" x 4 1/2": 3" 10" x 5 1/2": 3"	Full-length of back post
Depth-adjustment	1 3/4"	3/4"
Width between the laterals	Min: width of backrest -5" Max: width of backrest -3"	Min: width of backrest -4" Max: width of backrest -2"
Foldable	Yes	Yes

PADDING SPECIFICATIONS

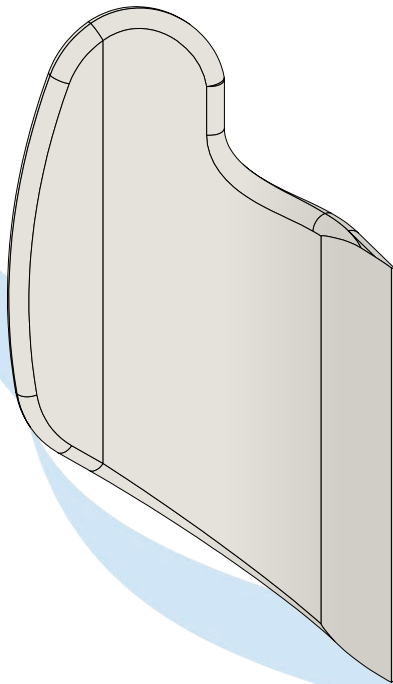
Pad options	Straight or Profiled	Straight or Profiled
Pad composition	1" Soft memory foam and 1/4" Plastazote	1" Soft memory foam and 1/4" Plastazote

COVERS

Outer cover	1/16" Neoprene	1/16" Neoprene
-------------	----------------	----------------

ELEVATED

Installed low on the backrest, with Velcro for precise positioning, the peculiar shape of these laterals offers optimal upper torso support and ensures liberty of movement of the upper limbs. The elevated lateral supports were designed to increase stability and balance and ensure proper alignment of the torso. Available with the Velcro fabric backrest only.



LATERAL SUPPORTS SPECIFICATIONS

Product Code	See order forms or product catalog
Dimension (W x H x D)	5" x 9 ½" x 4 ½", 5" x 12" x 5 ½", 6" x 14 ½" x 6 ½", 6" x 14 ½" x 7 ½"
Thickness	1 ½"
Composition	1" Ethafoam and ½" Urethane
Installation	Fixed with velcro
Height-adjustment	Full-length of backrest
Depth-adjustment	N/A
Width between the laterals	Min: 9" Max: width of backrest - 3"

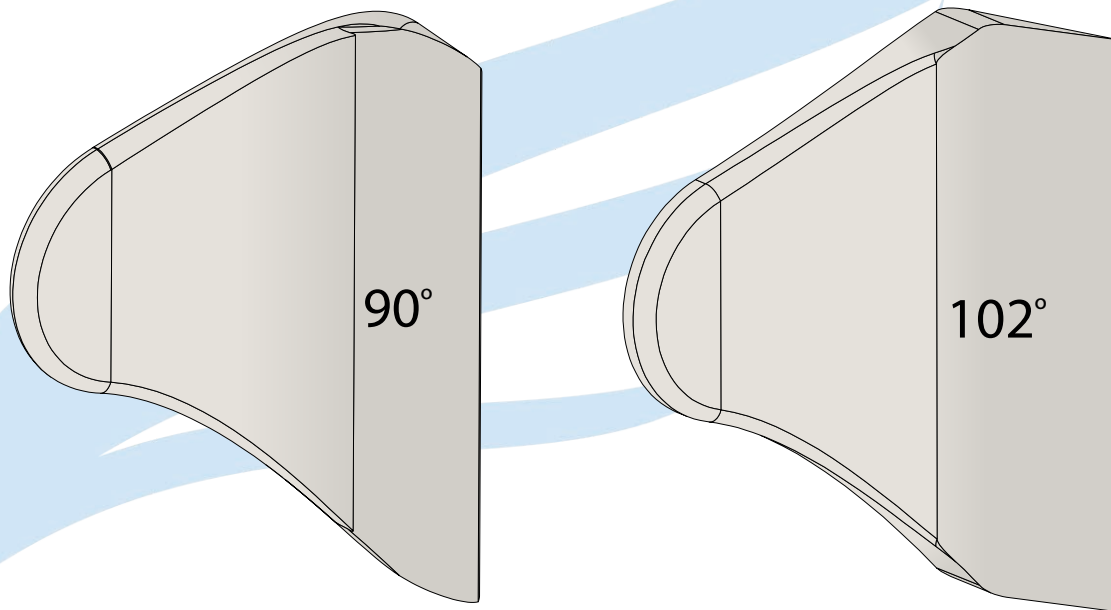
COVERS

Outer cover	Startex RR and Oxford
-------------	-----------------------

Note Only available with the Velcro Back.**

SHAPED

Providing superior comfort, the shaped laterals increases the support surface and help improve overall pressure distribution by encompassing the user's back. Installed with a Velcro fastening system, these laterals can be accurately placed on the backrest to improve balance and posture and help control lateral trunk movement.

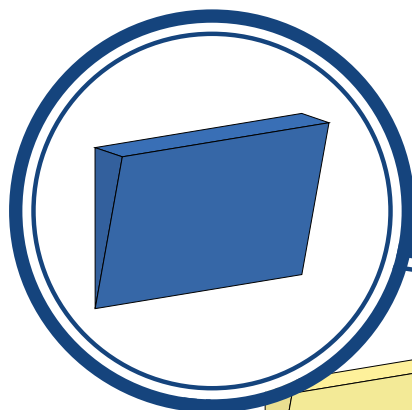


LATERAL SUPPORTS SPECIFICATIONS

Specification	Basic Shaped	Basic Shaped (Anti-Hammock Effect)
Product Code	See order forms or product catalog	See order forms or product catalog
Dimension (W x H x D)	6" x 14 ½" x 5 ½", 6" x 14 ½" x 6 ½"	6" x 14 ½" x 5 ½", 6" x 14 ½" x 6 ½"
Thickness	1 ½"	1 ½"
Composition	1" Ethafoam and ½" Urethane	1" Ethafoam and ½" Urethane
Installation	Fixed with velcro	Fixed with velcro
Height-adjustment	Min: 12" (to the apex) Max : Height of backrest -3"	Min: 12" (to the apex) Max : Height of backrest -3"
Depth-adjustment	N/A	N/A
Width between the laterals	Min: 10" Max: Width of backrest -3"	Min: 10" Max: Width of backrest -3"

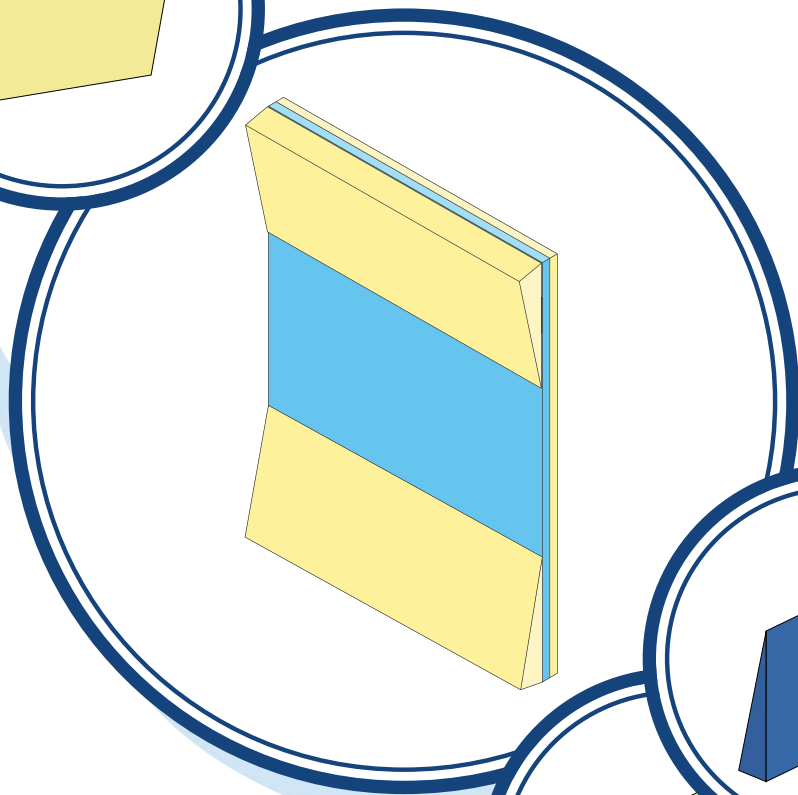
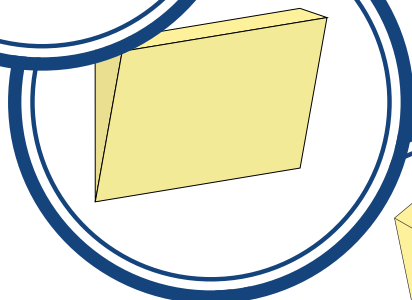
COVERS

Outer cover	Startex RR and Oxford	1/16" Neoprene
-------------	-----------------------	----------------



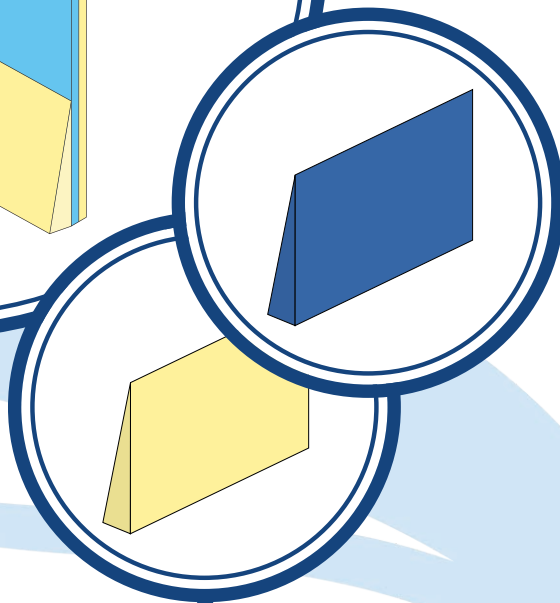
THORACIC WEDGE

The thoracic wedge is installed in the top section of the backrest in order to stabilize and support the upper back of users with kyphosis. Available in Urethane or Constructa foam.



LUMBAR WEDGE

Installed in the lower section of the backrest, the lumbar wedge creates a greater support surface for the affected lumbar region. Available in Urethane or Constructa foam.



TECHNICAL SPECIFICATIONS (THORACIC WEDGE)

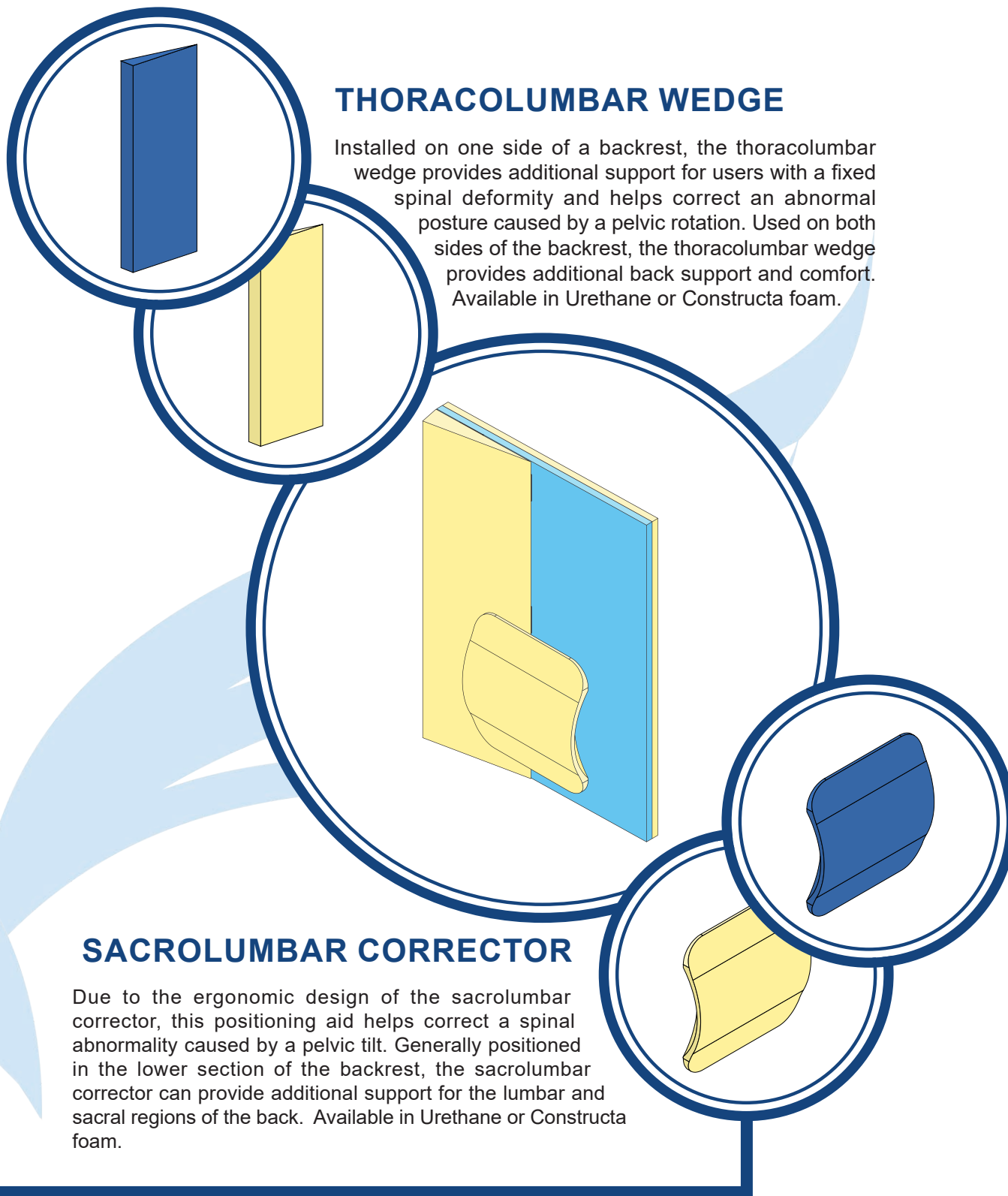
Product code for Constructa foam wedge	D3380-...
Product code for Urethane wedge	D3385-...
Height - Width	Adapted to backrest
Thickness	1", 1 ½" or 2"
Installation	Velcro or glued
Cover	Available with velcro installation only

TECHNICAL SPECIFICATIONS (LUMBAR WEDGE)

Product code for Constructa foam wedge	D3400-...
Product code for Urethane wedge	D3405-...
Height - Width	Adapted to backrest
Thickness	1", 1 ½" or 2"
Installation	Velcro or glued
Cover	Available with velcro installation only

THORACOLUMBAR WEDGE

Installed on one side of a backrest, the thoracolumbar wedge provides additional support for users with a fixed spinal deformity and helps correct an abnormal posture caused by a pelvic rotation. Used on both sides of the backrest, the thoracolumbar wedge provides additional back support and comfort. Available in Urethane or Constructa foam.



SACROLUMBAR CORRECTOR

Due to the ergonomic design of the sacrolumbar corrector, this positioning aid helps correct a spinal abnormality caused by a pelvic tilt. Generally positioned in the lower section of the backrest, the sacrolumbar corrector can provide additional support for the lumbar and sacral regions of the back. Available in Urethane or Constructa foam.

TECHNICAL SPECIFICATIONS (THORACOLUMBAR WEDGE)

Product code for Constructa foam wedge	D3390-...
Product code for Urethane wedge	D3395-...
Height - Width	Adapted to backrest
Thickness	1", 1 ½" or 2"
Installation	Velcro or glued
Cover	Available with velcro installation only

TECHNICAL SPECIFICATIONS (SACROLUMBAR CORRECTOR)

Product code	Varies depending on dimension and composition
Dimensions (W X H X T) for Constructa foam Sacrolumbar corrector	9 ½" x 10" x 1" (D3425) 9 ½" x 11" x 1 ½" (D3430) 9 ½" x 12" x 2" (D3435)
Dimensions (W X H X T) for Urethane Sacrolumbar corrector	9 ½" x 10" x 1" (D3410) 9 ½" x 11" x 1 ½" (D3415) 9 ½" x 12" x 2" (D3420)
Installation	Velcro or glued
Cover	Available with velcro installation only

COVERS



COVER FOR ADJUSTABLE TENSION BACKREST

Improves heat and moisture transfer, permits the installation of various postural components and eliminates surface tension.



VENTILATION



COVER FOR RIGID BACKREST

Improves heat and moisture transfer and comes with a handle for easy transport. Headrest and harness cut-out options are available.



VENTILATION



COVER WITH VELCRO SURFACE

Anti-hammock effect lateral supports and postural components with covers can be installed directly onto the Velcro surface, facilitating precise and quick adjustments.



EASY-TO-USE



INCONTINENCE COVER

Simple and efficient, protects the backrest with a fine layer of waterproof plastic fabric and sealed with Velcro.



EASY MAINTENANCE



COVERS

Backrest	Cover for adjustable tension backrest	Cover for rigid backrest	Incontinence cover
Axis®	D5214	N/A	PD50715
Premium™	D5201	N/A	PD50715
Valdis™	D5251	N/A	PD50715
Toile Velcro	N/A	N/A	N/A
HP2™	N/A	HP1C – Air Knit Cover D5212 - Lycra Cover HP1 - Standard Cutout for headrest support HP2 - Cutout for harness	PD50715

ACCESSORIES



BOOSTER CUSHION

The booster cushion is inserted between the anti-hammock effect lateral supports and secured with velcro, creating a smooth and uniform surface that maximises comfort.

TECHNICAL SPECIFICATIONS

Product code	12" width: D4045 14" width: D4050
Composition	½" Urethane
Width	12" or 14"
Height	Adapted to backrest

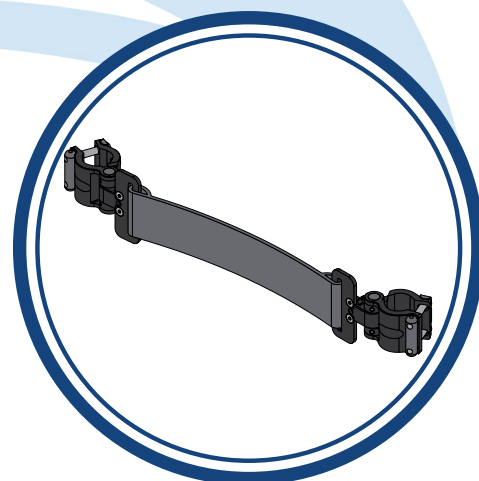
LUMBAR AND THORACOLUMBAR SYSTEM

The lumbar and thoracic support system is equipped with an adjustable strap and two mounting clamps that permit easy installation and positioning on any sling backrest, regardless of width.

Installed at the lumbar region, this system helps correct an anterior pelvic tilt or maximises contact of the support surface in cases of lordosis. Installed at the thoracic region, this system creates a forward projection in order to obtain a kyphotic profile.

TECHNICAL SPECIFICATIONS

Product code	D38699
Composition	Clamp mounting system, metal anchor plates and strap
Width	Adjusted with velcro to fit the width of backrest
Height	2"
Installation	Fixed on ¾" or 1" tubing



LUMBAR STRAP

This positioning aid provides additional support to the lower back in cases of lordosis or anterior pelvic tilt.

TECHNICAL SPECIFICATIONS

Product code	D3865
Composition	1"-thick urethane cushion and nylon strap
Width	8"
Height	4"

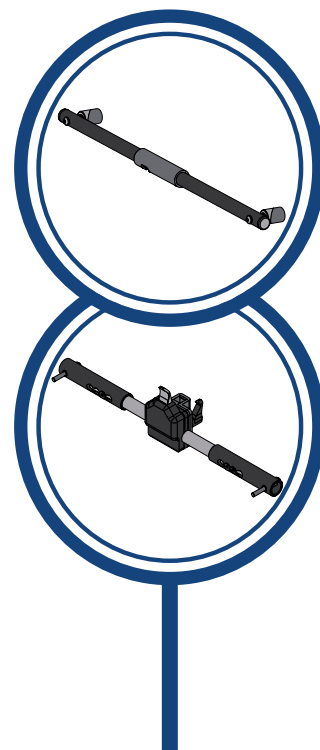
TENSION BAR

Standard tension bar : This mechanism is used to improve the solidity and stability of a tension adjustable backrest or a soft sling backrest.

Foldable tension bar : The foldable tension bar is equipped with a release mechanism, composed of a push-button, latch and release lever system, and is used for the installation of a headrest mounting fixture on a tension adjustable backrest or soft sling backrest.

TECHNICAL SPECIFICATIONS

Specification	Standard	Foldable
Product code	D3895 (14"- 15") D3900 (16"- 17") D3905 (18"- 19") D3910 (20"- 21")	AT5196 (12"- 15") AT5197 (15"- 18") AT5198 (18"- 22")
Adjustment	14" to 15" 16" to 17" 18" to 19" 20" to 21"	12" to 15" 15" to 18" 18" to 22"
Installation	Inserted in back post or screwed	Inserted in back post or screwed



3D-MOLDED SEATING

Based on the latest technology, Physipro™'s 3D Molded Seating is a state-of-the-art service that facilitates the creation of personalized postural solutions, quickly and efficiently.

» ADVANCED TECHNOLOGY AT YOUR DISPOSAL

Always at the forefront of the latest technological advance, Physipro™ has equipped itself with the newest 3D scanning system, the TechMed 3D. Offering the highest level of precision, the TechMed 3D's software, 3DsizeMe and scanner has gained recognition for its ability to quickly and efficiently trace the anthropometric measurements of a patient and deliver accurate and reliable results that enable the development of a personalized and unique postural aid. The real-time visualization, offered by this system, helps determine the exact postural needs of the patient.

OUR 3D MOLDED SEATING SERVICE IS CENTERED ON THE PATIENT'S WELL-BEING.



Simulator chair

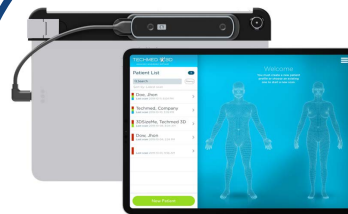


Photo credit:
XRProLLC
(Structure)

COMFORT, ERGONOMICS
AND PRECISION ARE AT THE
HEART OF OUR PRIORITIES

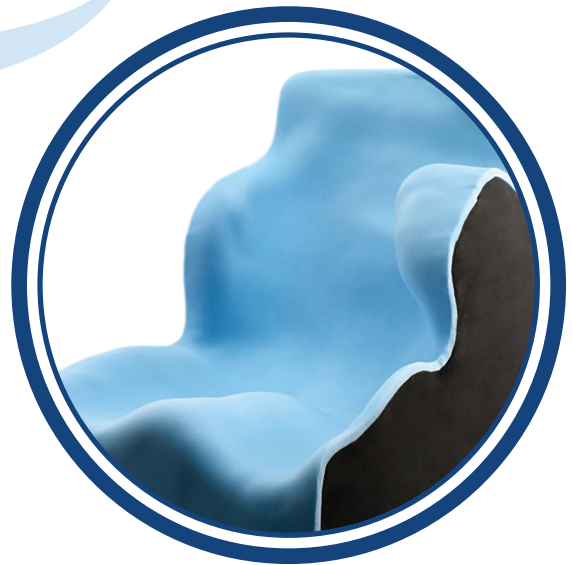


» ACCURATE AND PERSONALIZED EVALUATION

With the use of Physipro™'s Seating Simulator, our orthotists have at their disposal high-performance equipment that allows them to accurately determine the manufacturing requirements needed for the development of custom-made postural aids. The versatility of the TechMed 3D's scanning system allows our orthotist to quickly assess the patient's needs by simulating multiple positional adjustments, as well as visualizing the interaction of the different postural components. Used in conjunction with The TechMed 3D system, our seating simulator provides healthcare professionals with the tools needed to offer their patients the made-to-measure positioning aids deemed necessary for their comfort and postural needs.

» CUSTOM-MADE SOLUTION

Physipro™'s 3D Molded Seating service offers healthcare professionals the possibility to have personalized cushions and backrest made to accommodate their patient's specific pathology. Different densities of medical grade urethane and soft memory foams are available to provide the appropriate support, as well as pressure relief cushion and backrest inserts that are designed to prevent the development of skin lesions in high-risk zones. Waterproof covers are also available.



SPECIFICATIONS

Bottom Layer Options	Soft, Medium or Firm Injected Foam Block
Top Layer Options	Extra-Soft Memory Foam - ½" Soft Memory Foam - ¼" or ½" Viscoelastic Foam - ½"
Insert Options	Cubed Gel Flat Gel Silicone Gel Stimulite Sheet - ½" Air-Cell Cushion - 3" or 4"
Waterproof Covers	Transparent cover with velcro Waterproof Spray Coating

3D-MOLDED SEATING

» CRAFTSMANSHIP AT ITS BEST

In close collaboration with our orthotist, specialized in postural evaluation and the use of the TechMed 3D system, our manufacturing team works to ensure that the highest standards of quality apply to each custom-made product. Special care is given at each of the three key stages of the development of every 3D Molded positioning aid:

KNOW-HOW AND
EXPERIENCE YOU
CAN COUNT ON.

1 EVALUATION

After obtaining the 3D digital image, our orthotist proceeds by taking the anthropometric measurements of the patient and then transferring them to the workshop. All the collected information is then processed by a graphic specialist, who smooths out the 3D image in order to create the exact postural aid determined during the 3D Modeling evaluation. The respect of each patient's unique morphology and anthropometric measurements as well as their expressed needs and requirements are given the utmost attention.

2 FITTING

With Physipro™'s 3D Molded Seating you can be assured that the final product will perfectly correspond to the measurements provided. Our orthotist will be present during the first fitting of the 3D Molded product to ensure the conformity of the cushion and the backrest. All notes taken during the initial fitting, concerning modifications or adjustments, are sent to the manufacturing team who proceed to carry out all the necessary finishing touches, if need be.

3 FINAL DELIVERY SATISFACTION GUARANTEED

Fast and accurate, the Physipro™ 3D Molded Seating allows you to obtain a personalized product in the shortest amount of time in the industry. From the evaluation to the delivery, our team will ensure that your order is handled with efficiency and care. Our proximity to our customers and our devotion to their patient's well-being, will quickly provide you with the best custom-made solution.

LOWER & UPPER BODY

POSITIONING



PHYSIPRO®
Seating and mobility solutions

HEADRESTS

Headrest Pad

Physipro headrest supports give comfortable support in the occipital area. Each type meets specific postural needs, whether minor, moderate, or more complicated. Padded, with a machine washable removable cover.



Simple



Combination



Adjustable Lateral



Contoured Lateral

Headrest Support

Physipro headrest supports allow headrest height, angle, and depth to be adjusted. They can be installed on a rigid backrest or a tension bar. Designed for ease of adjustment and modification.



Multi-adjustable - Offset



Multi-adjustable - Straight



This headrest support made of aluminum offers lightness, safety and allows adjustment in a variety of positions. With continuous adjustment, it can be deported in depth.

ADJUSTMENTS

9" (23cm)

Horizontal adjustment from front to back

6 ½" (16,5cm)

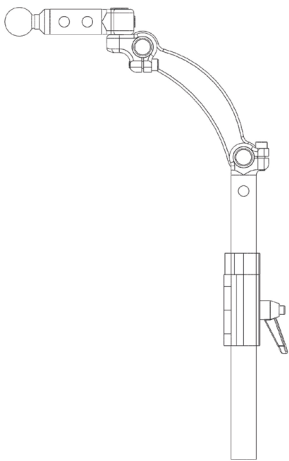
Vertical adjustment

45°

Adjustment to the left and right

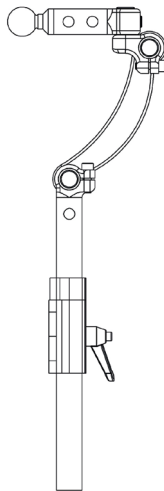
TECHNICAL SPECIFICATIONS

Vertical adjustment



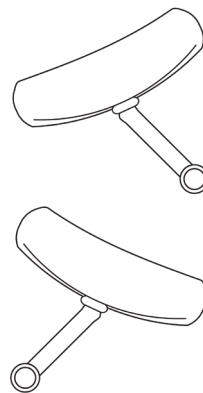
6 ½" (16,5cm)

Horizontal adjustment



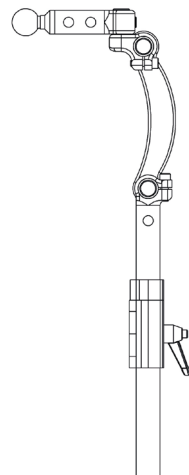
9" (23cm)

Horizontal axis



45°

Total height



40,5cm



UPPER BODY POSITIONING

Full Tray and Half Tray

These trays mount on an aluminum slide rail and fit all Physipro armrests as well as most other armrests. Optional swing-away half tray. Comfortable tray cushion are available.



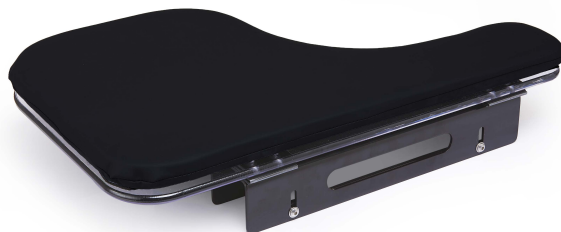
Full tray



Half tray



Full tray with cushion



Half tray with cushion

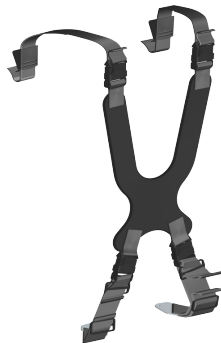
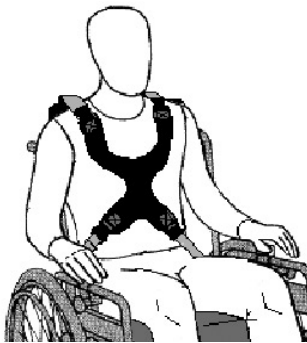
Upper-Limb Trough Support

Provides unequalled protection and comfort for the impaired upper limb. The anchoring mechanism allows continuous adjustment of lateral/oblique positioning. A swing-away section underneath the hand allows table access.



Chest Support

These chest supports provide necessary trunk support without compromising shoulder movement.



Available Sizes



Men



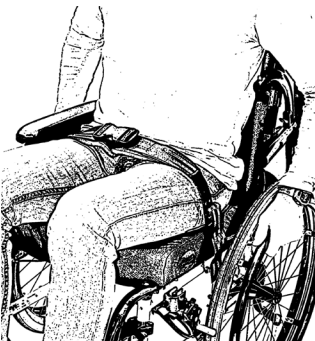
Women



Children

Two-Point Padded Hip Belt

This pelvic lap belt, designed for proper pelvic alignment, features comfort padding for proper pressure distribution and added comfort.



Padded Y-Style Four-Point Belt

This padded hip belt is attached to the wheelchair in four places. This belt is ideal for preventing anterior pelvic tilt and pelvic rotation.



LOWER BODY POSITIONING

Abduction Pommel and Mechanism

This postural component is used in cases of severe adduction. Made of high-density foam and topped with dispersion foam, the abduction pommel can be attached to various types of mechanisms.



**Push Button
Abductor Mechanism**



**Latch
Abductor Mechanism**



Abduction Pommel



**Horizontal Release
Abductor Mechanism**



**Vertical Release
Abductor Mechanism**

Lateral Adductor Support

The lateral adductor support mechanism is used to reduce lower limb abduction. This system is equipped with clamping blocks that allow angle adjustment. The lateral adductor mechanism can be attached to a $\frac{7}{8}$ " or 1" tube and can be installed bilaterally or placed on the left or right side.



Amputee Support

Provides optimum alignment of the lower leg stump to ensure both comfort and functionality. The cushion is made with plastazote, soft memory foam and viscoelastic foam. The amputee support cushion comes with a removable stretch cover. The standard amputee support can be installed on the rigid seat plate or attached to the seat rail. The multi-adjustable amputee support is attached to the upper part of the footrest tubing with a mounting clamp. The mounting clamp is compatible with 1" diameter tubing.



Standard Amputee Support



**Multi-adjustable
Amputee Support**

Knee Protector

The knee support contributes to the proper alignment of the lower limbs in case of abduction. The knee support's mounting clamp clips on the upper part of a $\frac{7}{8}$ " or 1" footrest tube.



Calf Support

The calf support prevents the feet from slipping under the seat.



Single Knee Stabilizer

The single knee stabilizer provides support by stabilizing the lower limb and preventing the pelvis from sliding forward. Fits either $\frac{7}{8}$ " or 1" tubing.



Double Knee Stabilizer

The double knee stabilizer prevents the pelvis from sliding forward and stabilizes the knees.



LOWER BODY POSITIONING

Foot Support

Keeps the foot securely in position while providing maximum comfort.



Foot Positioner

Used in cases of spasticity, this flexible corrective heel support fits comfortably around the foot, allowing it to flex.



Foot and Heel Straps

The foot strap effectively stabilizes the foot and the heel strap prevents the foot from sliding backwards.



Ankle Hugger

The ankle hugger comfortably holds the ankle in place while allowing flexion of the foot.



Foot Box

Used to ensure proper containment of the feet while allowing freedom of movement. This support can be angled and adjusted in height to provide greater comfort and optimal immersion.



Legrest Protector Pads

Physipro inc. offers several models of protector pads for standard and elevating legrests. Installing protector pads on legrest tubes reduces the risk of bruising and skin damage.

Protector pad for elevating and articulating legrest

Compatible with elevating and articulating legrest.
Made with neoprene. Height: 8"



Universal protector pad

Compatible with 60°, 70° or 90° legrest.
Made with neoprene. Height: 7"



Protector pad - At the knee with eyelet

Compatible with all legrest models.
Made with neoprene. Height: 6 ½"



Protector pad - At the knee with Velcro

Compatible with all legrest models.
Made with neoprene. Height: 6 ½"



Protector pad - Full Length

Compatible with all legrest models.
Made with neoprene. Height: 10"





PHYSIPRO®

Seating and mobility solutions

30 years

Canada

370, 10th Avenue South
Sherbrooke (Quebec) J1G 2R7
Canada

1 800 668-2252
info@physipro.com
www.physipro.com

Europe

Village des entrepreneurs
461, rue Saint-Léonard
49000 Angers
France

02 41 69 38 01
contact@physipro.fr